

Fuels Treatment Overview

Recommended Treatment Area SR004

Sibley Volcanic Regional Park

Background: In 2010, the East Bay Regional Park District’s Board of Directors approved the *Wildfire Hazard Reduction and Resource Management Plan* (“Plan”) and the accompanying CEQA (California Environmental Quality Act) document which covers hill and shoreline parklands from Richmond to Castro Valley within the Measure CC (Measure FF) funded area. The approved Plan is an integral component of the Park District’s Safe and Healthy Forests initiative for wildfire protection. This project is within Recommended Treatment Area (RTA) SR004 of the Plan. Funding is provided through the voter-approved Measures CC (and FF) and hazard mitigation grants from FEMA (Federal Emergency Management Agency).

Why: The purpose of this project is to establish a zone of natural habitat that is resistant to wildfires, more accessible for firefighters, and less fire-prone. Hazardous wildland vegetation will be reduced in the wildland-urban interface. Overgrown, dense brush and trees and other vegetation will be thinned out or removed throughout the project on Park District property. Healthy native oak and bay trees will be preserved where feasible. Some of the logs and branches will be chipped onsite, some will be completely removed, and some material will be left in piles to be burned during the rainy season. The work is prescribed by FEMA and fully permitted by State and Federal environmental regulatory agencies. Homeowners should continue to clear vegetation on their own property and take appropriate measures to protect their homes against wildfire.

Who: The Park District’s Fire Department is managing the project. Various crews and contractors will be performing the initial work and ongoing maintenance. Contractors may be using heavy equipment and chippers. The Park District’s Stewardship Department and consulting biologists will be closely monitoring to ensure appropriate resource protection. The Park District’s survey department may be surveying and marking some of the property boundaries to help us make sure we perform work on District lands.

When: Tree contractors are to begin tree removals, ladder fuel reduction, and brush removal work mid-July. The Park District and its contractors will minimize the impact to park users

by restricting work hours to weekdays (7:30 am to 5:30 pm) and temporarily redirecting trail use, if necessary. Equipment and crews will be operating during the project.

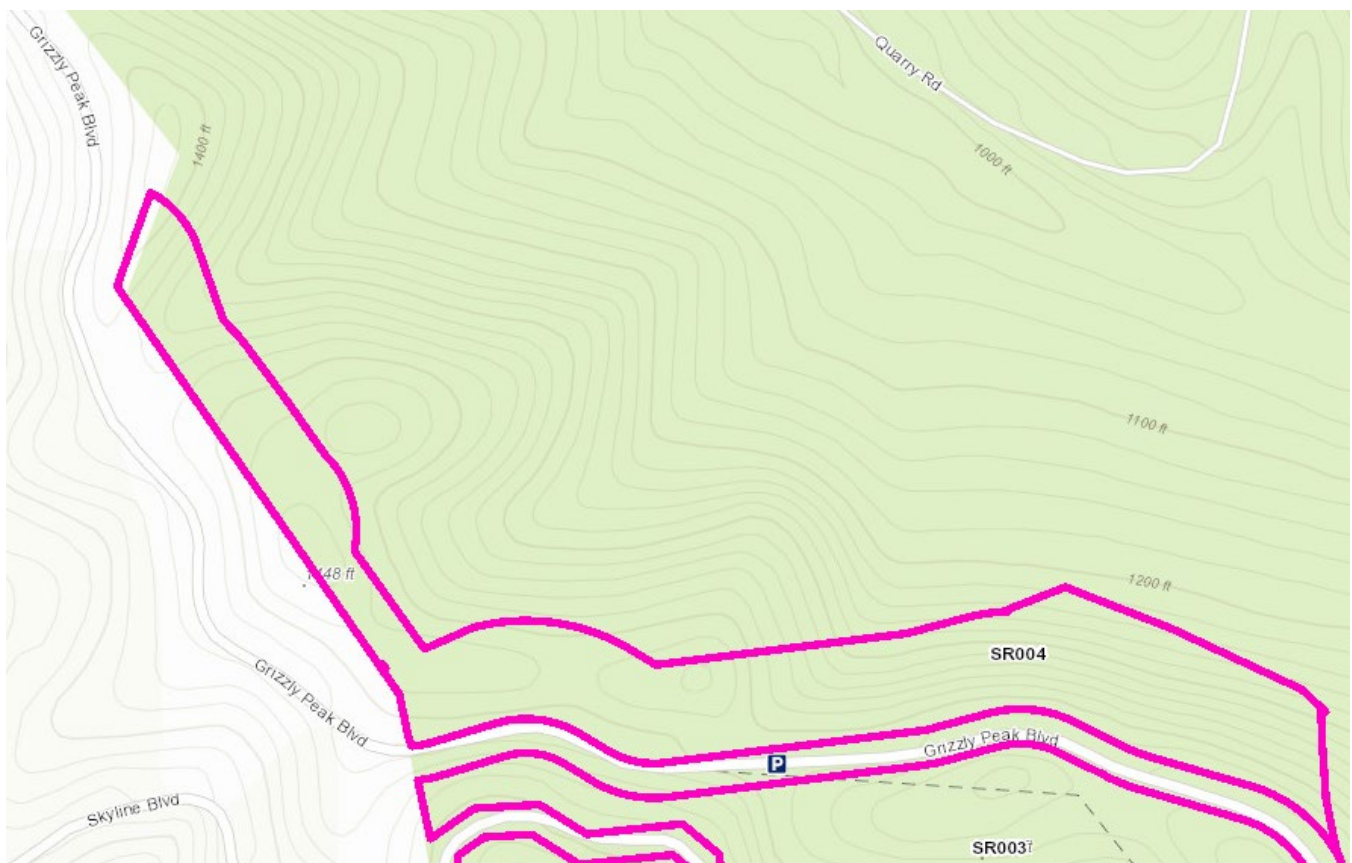
Additional

Information: More information about the Park District's Wildfire Hazard Reduction and Resource Management Plan and specific maps and reports can be found at <http://www.ebparks.org/about/stewardship/fuelsplan/default.htm>

Details about the project and resource protection considerations can be found by scrolling down to the appropriate and Recommended Treatment Area at <https://www.ebparks.org/about/stewardship/fuelsplan/rta.htm>

Updates to the current fuels management projects can be found at: https://www.ebparks.org/about/fire/fuels_management.htm

Site Map:



SR004 Fuels Treatment Overview Updated
Last update: July 19, 2019