


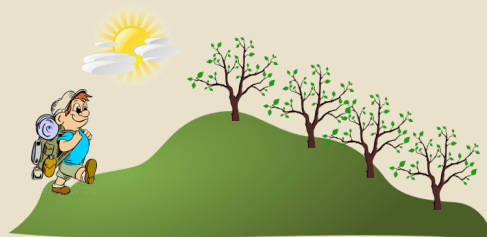
TILDEN NATURE AREA

JANUARY-FEBRUARY 2024 NATURALIST PROGRAMS

East Bay
Regional Park District
www.ebparks.org

All programs meet at the Environmental Education Center unless otherwise noted. Accommodation will be made for visitors with disabilities upon advance request.

Programs requiring registration have a  symbol after the program name. Use the listed course number when making reservations by phone (1-888-EBPARKS opt. 2) or at our registration website, ebparks.com. All other programs are drop-in only. For more information on drop-in programs call 510-544-2233 or email tnarea@ebparks.org.



THE OVER-THE-HILLS GANG

Various Parks

Anthony Fisher

10am-12:30pm, Tue, Jan 2 & 16, Feb 13 & 27

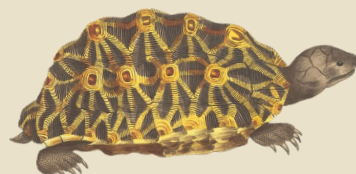
Hikers 55 years and older interested in nature study, history, fitness, and fun are invited to join this series of monthly excursions exploring the Regional Parks.

Jan 2: Leona Canyon, Canyon Oak Drive entrance (no facilities)

Jan 16: Reinhardt Redwood Regional Park, Canyon Meadow staging area — search for ladybugs.

Feb 13: Point Pinole, Atlas Road staging area—Learn about its explosive past. (mostly flat).

Feb 27: Briones, Old Briones Road entrance—We're heading to the ponds and lagoons to search for life. Hills.



CREATURE FEATURE

Interpretive Staff


10:30-11am, Every Sat in Jan & Feb (except Jan 20)

From reptiles to rabbits, cockroaches to cows, you'll be amazed and mystified upon meeting our featured animal ambassador! Meet at the front desk in the visitor center.


The Tilden Nature Area

is a 740-acre preserve containing 10 miles of hiking trails, a small lake, several ponds and the Little Farm. This area is ideal for nature study. The Environmental Education Center is open Tues-Sun from 10am-4:30pm. The Little Farm is open daily from 8:30am-4pm.

Program Key:

 = Parking fee may apply

 = Wheelchair accessible

 = Online registration

Contact Us:

Mail: 600 Canon Drive

Berkeley, CA 94708

Telephone: 510-544-2233

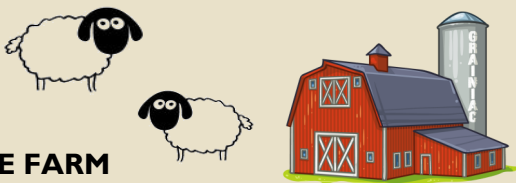
Email: tnarea@ebparks.org

Healthy Parks
Healthy People

TILDEN NATURE AREA

JANUARY-FEBRUARY 2024 NATURALIST PROGRAMS

East Bay 
Regional Park District
www.ebparks.org



FUN ON THE FARM

Interpretive Staff

2-3pm, Every Sat in Jan & Feb (except Jan 20)

Get the inside scoop on the latest happenings at the Little Farm! What are the chickens saying? Why are the goats so cute? Why do rabbits have long ears? Meet on the farm near the chicken yard.



SUNDAY STORYTIME ☿

Interpretive Staff

10:30-11am, Every Sun in Jan & Feb (except Jan 21)

Gather 'round for a wonderful children's book read aloud. Meet at the front desk of the visitor center.

STROLL WITH THE GOATS

Jenna Collins

11:30am-Noon, Sun, Jan 7 & 14

Join us as we take our favorite ruminates out to stretch their legs and see new sights! This short walk will start and end at the Little Farm.



FELTED ACORNS ☿

Jenna Collins

1-2pm, Sun, Jan 7, 14 & 28

Join us as we find out how to make our very own wool craft! We'll use water and soap to make our woolly creations then top it off with a little acorn cap. Meet at the visitor center.



TILDEN FUNGUS FAIR ☿

Melissa Fowlks & Interpretive Staff

10:am-4:30pm, Sat & Sun, Jan 20 & 21

Celebrate the fruits of winter! View hundreds of local mushroom specimens, mingle with the mycological community and enjoy presentations by guest speakers at this two-day special event. All ages welcome.

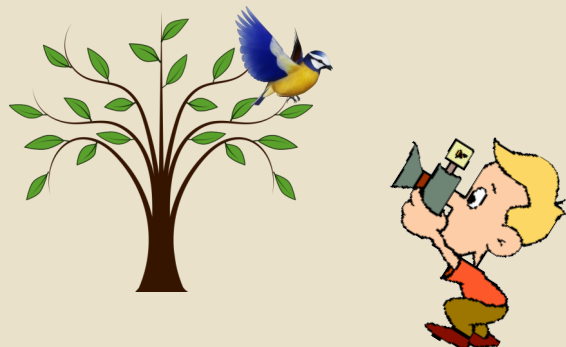


Healthy Parks 
Healthy People

TILDEN NATURE AREA

JANUARY-FEBRUARY 2024 NATURALIST PROGRAMS

East Bay
Regional Park District
www.ebparks.org



MONDAY BIRDING

Various Parks

Anthony Fisher

9am-Noon, Mon, Jan 8, 22 & 29 and Feb 5 & 26

Birds, habitat, plants, and spoor, the mysteries of Nature await!

Jan 8: Shimada Friendship Park. Flat.

Jan 22: Miller Knox, Richmond. First entrance after the tunnel. Flat.

Jan 29: Briones, Bear Creek staging area. Hills.

Feb 5: Point Pinole, Atlas Road Staging Area. Flat.

Feb 26: Inspiration Point. Hills.



GARDEN HELPERS

Paula Urtecho

1-2pm, Fri, Jan 12 & Tue, Jan 23

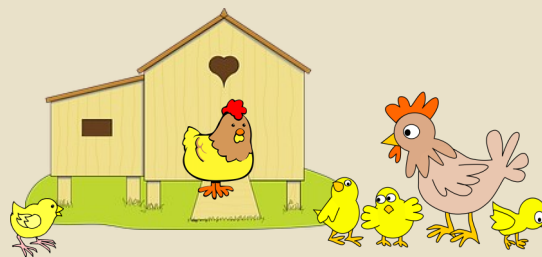
There is plenty to do in the winter garden. Drop in to lend a hand and see how the garden grows! Enter next to the Round Barn at the Little Farm.

FROM THE ROAR OF THE PAST TO THE CLUCK OF TODAY

Jenna Collins

1-2pm, Sat, Feb 3, 10 & 17

Dinosaurs and chickens: they got something in common. Discover what connection a farmyard fowl has with a mighty T-Rex. We'll start with a story about a plucky little chicken and a cranky dinosaur before heading out to the farmyard to take a look into the past.



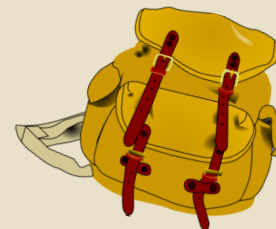
PEOPLE OF COLOR: WALKS AND TALKS WINTER WALK

Point Pinole, Dotson Family Marsh Staging Area

Paula Urtecho

9-11am, Fri, Feb 9

There's nothing like a brisk walk to get warmed up! Bring binoculars if you have them, as we will likely see some birds. If you don't have binoculars, not to worry—you can borrow a pair! Dress in layers, bring water and a snack. Heavy rain cancels.

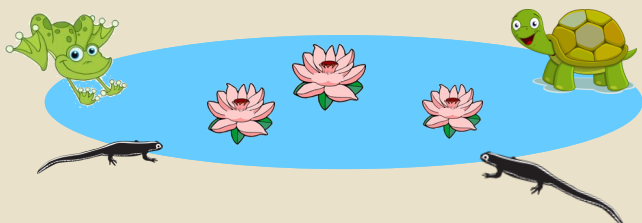


Healthy Parks
Healthy People

TILDEN NATURE AREA

JANUARY-FEBRUARY 2024 NATURALIST PROGRAMS

East Bay
Regional Park District
www.ebparks.org



CREEK & POND STUDY

Jenna Collins

11am-Noon, Sat, Feb 17

Take a 'dip' and discover creatures that call streams and ponds home. Wear shoes to get wet and muddy in.



BLACK HISTORY MONTH POINT PINOLE STROLL

Point Pinole, Giant Hwy Staging Area

Melissa Fowlks

11am-12:30pm, Sat, Feb 17

Celebrate Black History Month with a stroll around Point Pinole. Learn the local history of Parchester Village while exploring Dotson Family Marsh and whom it is named after.

TILDEN TOTS

Melissa Fowlks

10:30-11:30am, Wed, Feb 21

Bring the littlest ones to the park to explore! Do an activity, meet some animals, and listen along to a story. Meet outside the visitor center.



HIKE AND STORYTIME

Point Pinole Regional Park, Atlas Staging Area

Melissa Fowlks

11am-12:30pm, Thu, Feb 22

Join Naturalist Melissa and Librarian Deborah in nature exploration activities, and a themed Storytime.

WINTER WALK

Carquinez Strait, Port Costa Staging Area

Paula Urtecho

9am-Noon, Fri, Feb 23

There's nothing like a brisk walk to get warmed up! We'll take in spectacular views of Carquinez Strait and look for signs of Spring's approach along this rolling, paved trail. Dress in layers, bring water and a snack. Heavy rain cancels.



Healthy Parks
Healthy People