

2023 IMPACT REPORT



REGIONAL PARKS
Foundation

Supporting East Bay Regional Parks

Universal Access

At the Foundation, we believe that parks are for everyone. Our mission is to eliminate barriers to access and create a welcoming environment by supporting programs that engage historically underserved groups and ensure that the rich diversity of the East Bay is represented in our parks.

The Foundation provides transportation for school groups, translation services for park programs, events for veterans, and activities for youth and adults with disabilities. We also collaborate with local libraries on the Backpacks to Parks initiative, offer scholarships, and provide free memberships to underserved communities. These efforts help reduce or eliminate the costs associated with enjoying the parks, offering meaningful experiences that foster lasting connections.



1,064 **All Abilities Day** participants

885 Visitors benefited from **language access** and **translation services**

345 Scholarships awarded for **boating and fishing programs** and **summer camps**



2,650 **Students and teachers were supported** with classroom materials & transportation for field trips through the **Kids Healthy Outdoor Challenge**

427 Students enjoyed **After-School Excursions**, a program in collaboration with community partner organizations & public libraries in Contra Costa and Alameda counties

368 Students participated in **Explore Your Watershed**, which includes field trips to the redwoods and shoreline parks

55%



Percentage of total annual program funding in support of **youth development**

Youth Development

The Foundation is dedicated to nurturing confidence, resilience, and creativity in young people. By offering essential science education and practical outdoor skills, we cultivate the next generation of environmental stewards. Our youth programs provide students with opportunities to learn vital environmental science concepts, engage with nature in their own communities, and learn about green career pathways.

Health, Wellness and Safety

Spending time in nature enhances both our emotional and physical health. The Regional Parks Foundation fosters healthier communities by supporting programs that encourage people to connect with nature and stay active. From water safety initiatives and trail safety gear to emergency response rescue equipment, we equip park guests and staff with the necessary skills, tools, and confidence to safely enjoy our parks and recreational spaces.

10,000+

Participated in the
30th Annual Trails Challenge



614

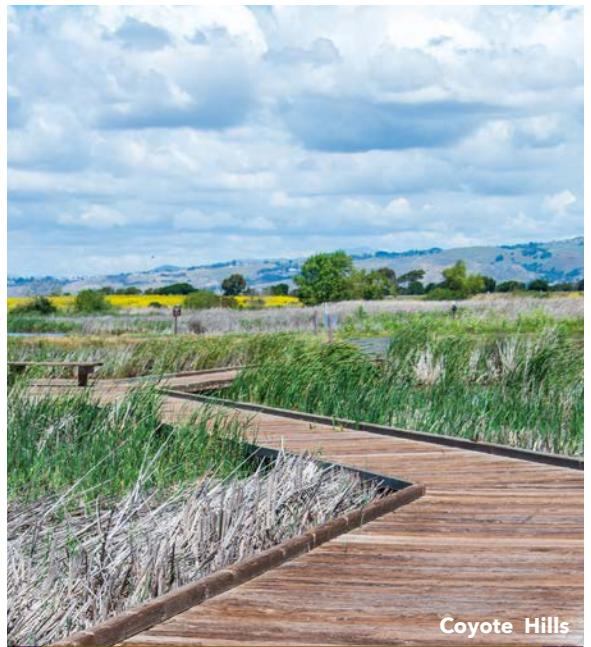
Joined **Multi Cultural Wellness Walks** in 6 regional parks

17,533

Lifejackets loaned at our swim facilities

17,538

Swim tests to prevent drowning



Coyote Hills

\$37,388

Awarded by California Department of Forestry & Fire Protection for **mixed herd grazing**

\$37,500

Awarded by PG&E for **fuels reduction program**

\$40,000

Provided for the **Watershed Restoration Apprenticeship program**, an innovative workforce development initiative in partnership with Richmond nonprofit **Urban Tilth**

Environmental Stewardship

In response to the evolving challenges posed by climate change, the Foundation dedicates resources to habitat restoration and species protection. Additionally, we fund fuels reduction and grazing projects in the wildlife-urban interface to mitigate wildfire risks, safeguarding both our natural ecosystems and neighboring communities.

Community Engagement

Show your love for the parks through one of the many engagement opportunities the Foundation offers. Partner with us to keep parks accessible for all and to protect wildlife and open space for generations to come. **We can't do it without you!**

12,200+

Regional Parks
Foundation Members



Membership

There are countless reasons to join the Regional Parks Foundation. Whether you're into walking or hiking, birdwatching, biking, swimming, fishing, boating, or celebrating special occasions outdoors, our parks offer something for everyone. When you become a member, you not only gain access to incredible benefits that enhance your park experiences, but you are also giving back to the regional parks that we know and love. Your membership is a valuable investment in our community.

Institutional Partners

Thank you to our corporate and institutional partners who provide critical support for Regional Parks Foundation programs and initiatives:



Donors

Propelled by the generosity of donors like you, thousands of children, youth, and families can connect to life-changing experiences in nature. Together, we are ensuring equal access to the East Bay's beautiful parks, trails, and outdoor experiences, preserving parklands for generations to come.

Robert W. Crown
Memorial State Beach

\$2.6 million

Regional Parks Foundation **funds raised in 2023**

11,529

Community members
served by Regional Parks
Foundation support

Bequests and Legacy Gifts

The Regional Parks Foundation offers a robust estate planning program for members of the community interested in leaving a bequest or a gift to the causes that matter to them. We host regular estate planning seminars and our Planned Giving Committee, comprised of professionals in the fields of estate planning, tax planning and wealth management, offers resources for donors to make informed decisions.

\$268,769

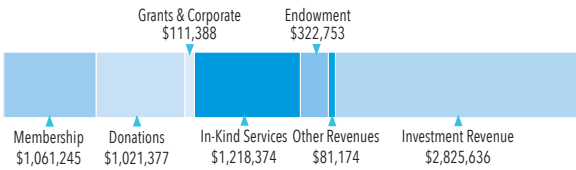


Total value of bequests received in 2023, with individual bequests ranging from \$4,000 to over \$200,000

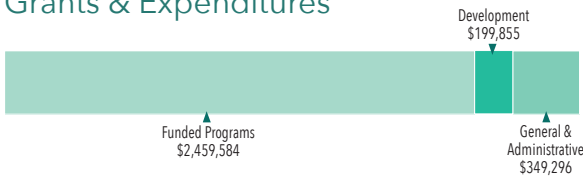
2023 Financials



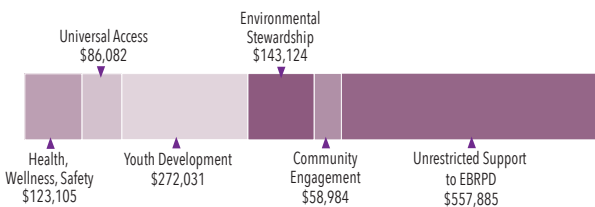
Revenue



Grants & Expenditures*



Program Funding



*The Regional Parks Foundation received \$1,218,374 in in kind labor and facilities support

Board & Staff

2023 BOARD

Les Hausrath, *President*

Holly Potter, *Vice President*

Bruce Kern, *Treasurer*

John Martin, *Secretary*

Yakov Berenshteyn

Bob Brown

Nik Dehejia

Craig Geldard

Renee Kemp

Stephanie Ledesma

Amber Miksza

Ravi Poorsina

Jeset Sidore

Taj Tashombe

Keith White

Geoffrey Zimmerman

STAFF

Lauren Bernstein, *Executive Director*

Anna Huang, *Finance Manager*

Michele Kageura, *Foundation Membership Officer*

Terri Biondi, *Membership Development Associate*

Cindy Orcutt, *Membership Development Associate*

Paola Pinedo, *Membership Development Associate*

Kerstin Firmin, *Administrative Analyst II*



Sunol Regional Wilderness
Photo: Jerry Ting

Mission & Values

The Regional Parks Foundation supports the East Bay Regional Park District through fundraising to provide universal access, environmental stewardship, educational and recreational programs, and the acquisition of parklands.

At the Regional Parks Foundation, we recognize the essential role nature plays in fostering a healthy, balanced life. Our mission is to provide resources that ensure everyone in the East Bay can enjoy equal access to the parks, trails, programs, and services of the East Bay Regional Park District. By harnessing the benefits of nature, we strive to keep our communities vibrant and healthy, while inspiring future generations to cherish and safeguard our rich natural and cultural heritage.



30 million

Annual visits to the East Bay Regional Parks from the Bay Area and beyond



REGIONAL PARKS
Foundation

Supporting East Bay Regional Parks

RegionalParksFoundation.org