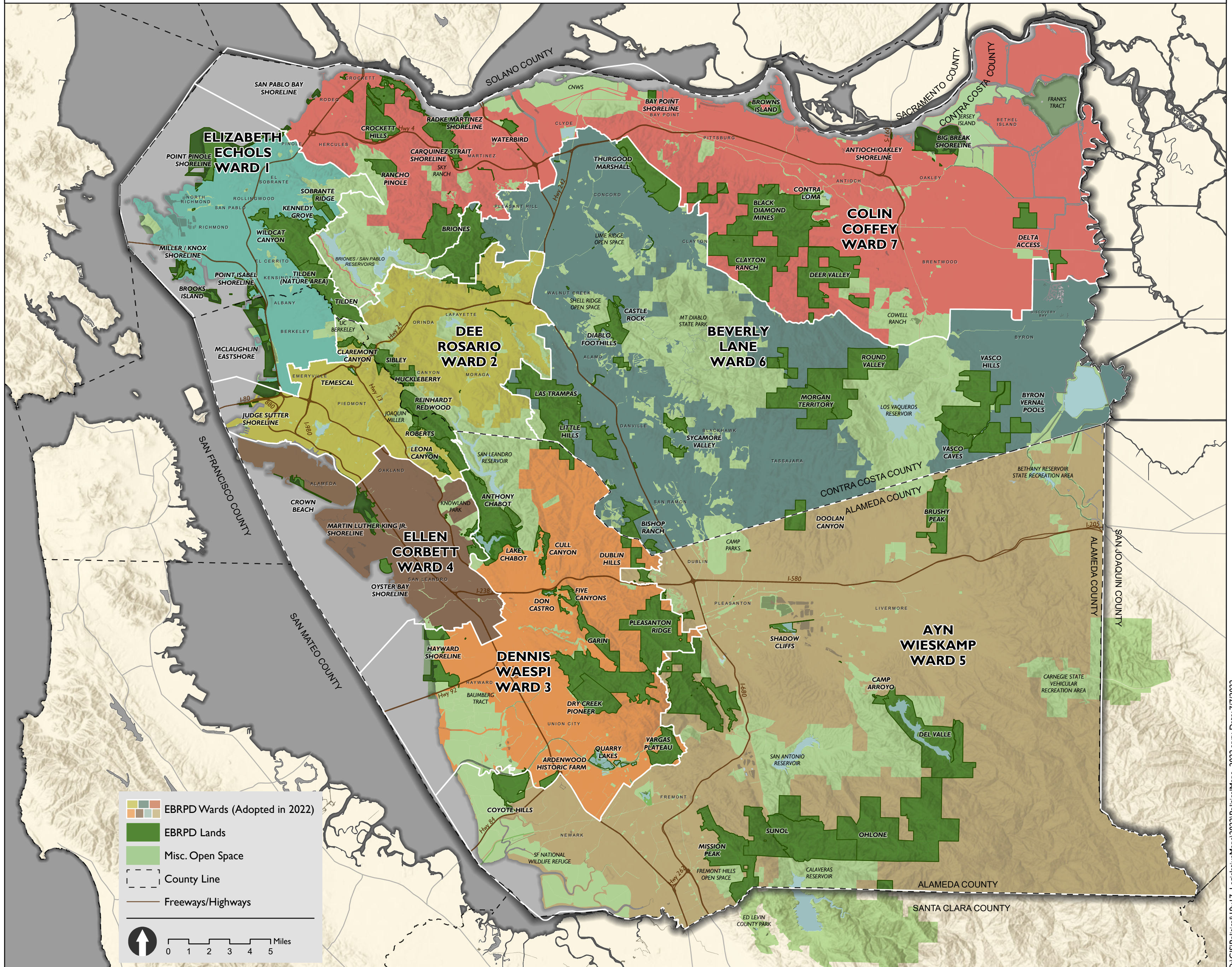


EAST BAY REGIONAL PARK DISTRICT WARD MAP



2020 Census Data of the Seven Wards

District		1	2	3	4	5	6	7	Total
	Total Pop	393,695	405,904	409,922	391,195	410,633	418,939	421,242	2,851,530
	Deviation from ideal	-13,666	-1,457	2,561	-16,166	3,272	11,578	13,881	30,047
	% Deviation	-3.35%	-0.36%	0.63%	-3.97%	0.80%	2.84%	3.41%	7.38%
Total Pop	% Hisp	29.5%	17%	26%	36%	15%	17%	34%	25%
	% NH White	32%	43%	19%	19%	32%	51%	31%	33%
	% NH Black	12%	14%	7%	17%	3%	3%	14%	10%
	% Asian-American	22%	22%	44%	23%	47%	26%	17%	29%
Citizen Voting Age Pop	Total	252,516	285,386	258,258	242,475	251,177	280,008	270,399	1,840,220
	% Hisp	18%	11%	20%	23%	14%	12%	24%	17%
	% NH White	43%	53%	30%	28%	48%	66%	43%	45%
	% NH Black	15%	15%	9%	23%	4%	3%	15%	12%
	% Asian/Pac.Isl.	21%	19%	39%	24%	34%	18%	16%	24%
Voter Registration (Nov 2020)	Total	225,902	272,345	221,390	210,438	230,862	269,819	241,716	1,672,472
	% Latino est.	18%	9%	24%	24%	13%	11%	26%	17%
	% Spanish-Surnamed	16%	8%	22%	22%	12%	10%	24%	16%
	% Asian-Surnamed	10%	12%	21%	13%	23%	11%	5%	13%
	% Filipino-Surnamed	2%	1%	5%	3%	2%	2%	4%	3%
	% NH White est.	53%	61%	39%	35%	58%	73%	50%	54%
	% NH Black	18%	16%	11%	26%	4%	3%	17%	13%
Voter Turnout (Nov 2020)	Total	181,216	226,541	176,871	161,660	193,398	232,226	191,042	1,362,954
	% Latino est.	17%	9%	23%	23%	12%	10%	24%	16%
	% Spanish-Surnamed	15%	8%	21%	21%	12%	10%	22%	15%
	% Asian-Surnamed	10%	11%	22%	13%	23%	11%	5%	13%
	% Filipino-Surnamed	2%	1%	5%	3%	2%	2%	4%	3%
	% NH White est.	55%	63%	40%	38%	58%	74%	51%	56%
	% NH Black	16%	15%	11%	24%	4%	3%	16%	12%
Voter Turnout (Nov 2018)	Total	139,734	182,697	117,602	114,245	133,096	166,839	122,906	977,119
	% Latino est.	14%	8%	21%	20%	11%	9%	21%	14%
	% Spanish-Surnamed	13%	7%	20%	18%	11%	9%	20%	13%
	% Asian-Surnamed	8%	9%	18%	10%	18%	8%	4%	11%
	% Filipino-Surnamed	1%	1%	4%	2%	2%	2%	3%	2%
	% NH White est.	60%	67%	45%	42%	64%	78%	56%	60%
	% NH Black est.	15%	14%	11%	25%	3%	3%	16%	12%
ACS Pop. Est.	Total	380,577	394,617	409,704	385,778	405,050	413,999	407,862	2,797,588
Age	age0-19	23%	20%	23%	25%	25%	25%	27%	24%
	age20-60	58%	57%	57%	56%	56%	53%	54%	56%
	age60plus	20%	23%	20%	19%	19%	22%	19%	20%
Immigration	immigrants	30%	24%	40%	31%	36%	25%	23%	30%
	naturalized	46%	56%	58%	51%	55%	57%	57%	54%
Language spoken at home	english	57%	68%	45%	52%	54%	69%	64%	58%
	spanish	22%	11%	18%	27%	9%	10%	23%	17%
	asian-lang	13%	13%	25%	16%	23%	11%	8%	16%
	other lang	8%	7%	13%	5%	14%	9%	5%	9%
Language Fluency	Speaks Eng. "Less than Very Well"	16%	14%	19%	22%	14%	11%	14%	16%
Education (among those age 25+)	hs-grad	33%	26%	42%	42%	32%	31%	50%	36%
	bachelor	25%	32%	26%	21%	30%	34%	18%	27%
	graduatedegree	23%	26%	15%	11%	25%	22%	8%	19%
Child in Household	child-under18	29%	24%	38%	35%	41%	35%	39%	34%
Pct of Pop. Age 16+	employed	65%	67%	66%	66%	68%	66%	65%	66%
Household Income	income 0-25k	16%	16%	9%	17%	7%	9%	13%	12%
	income 25-50k	17%	14%	11%	18%	8%	10%	15%	13%
	income 50-75k	14%	12%	13%	16%	9%	10%	15%	13%
	income 75-200k	39%	35%	47%	40%	47%	44%	46%	42%
	income 200k-plus	14%	22%	19%	10%	29%	27%	11%	19%
Housing Stats	single family	59%	50%	74%	64%	76%	74%	84%	68%
	multi-family	41%	50%	26%	36%	24%	26%	16%	32%
	rented	51%	51%	39%	51%	33%	32%	34%	41%
	owned	49%	49%	61%	49%	67%	68%	66%	59%

Total population data from the 2020 Decennial Census.

Surname-based Voter Registration and Turnout data from the California Statewide Database.

Latino voter registration and turnout data are Spanish-surname counts adjusted using Census Population Department undercount estimates. NH White and NH Black registration and turnout counts estimated by NDC. Citizen Voting Age Pop., Age, Immigration, and other demographics from the 2015-2019 American Community Survey and Special Tabulation 5-year data.