



Master Plan 2013

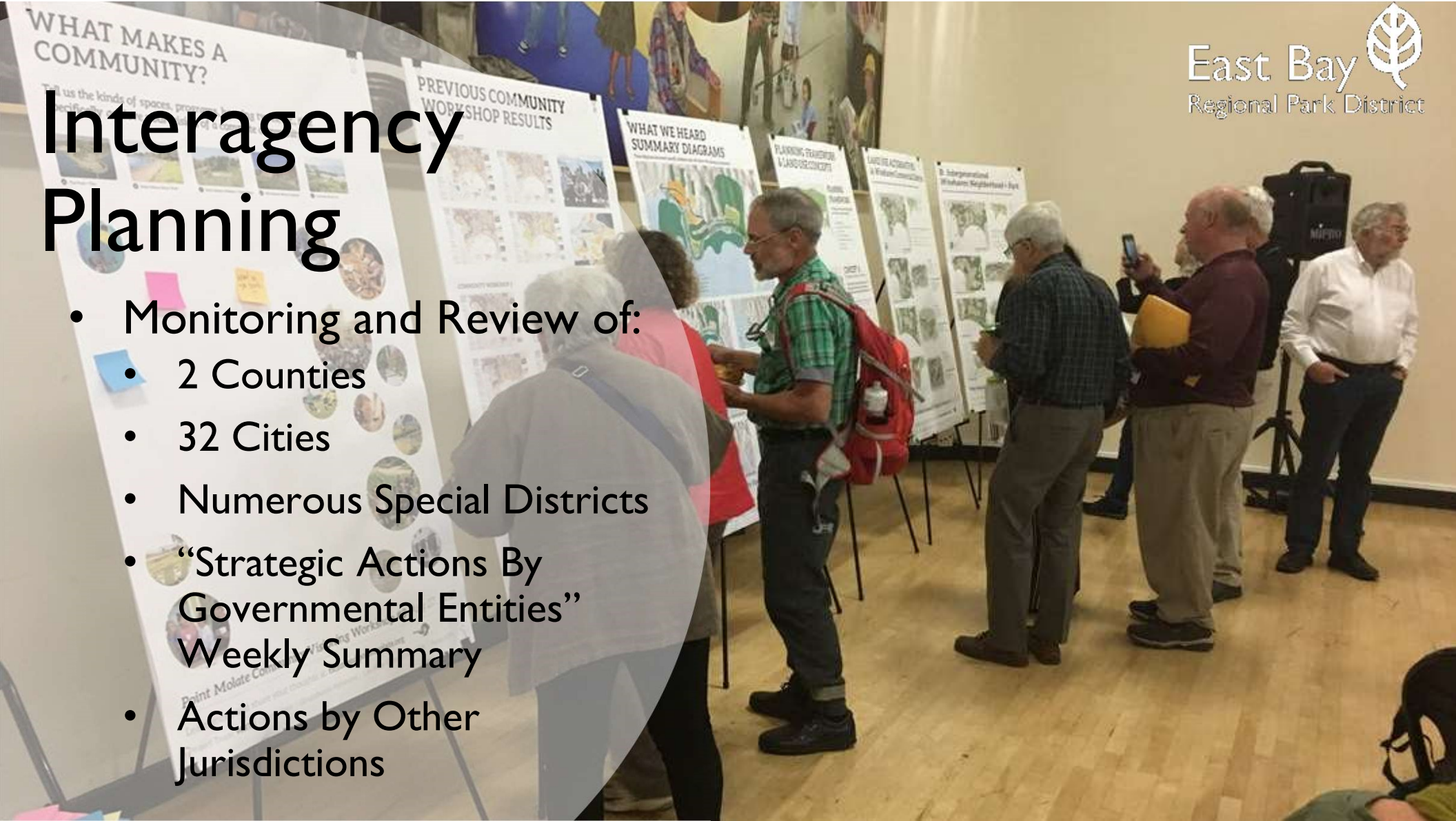
VISION STATEMENT:

“Provide leadership to
guide land use decisions in
the East Bay that relate to
the District.”



Interagency Planning

- Monitoring and Review of:
 - 2 Counties
 - 32 Cities
 - Numerous Special Districts
 - “Strategic Actions By Governmental Entities” Weekly Summary
 - Actions by Other Jurisdictions



Working with Project Developers and State, Local, and Regional Agencies to:

- Ensure Land Use Decisions:
- Do not Impact District Lands
- Minimize Impacts to East Bay Resources
- Advance the District's Master Plan Where Possible

[STORYMAP LINK](#)