

**CONTRA COSTA COUNTY  
EAST BAY REGIONAL PARK DISTRICT  
LIAISON COMMITTEE**

**Wednesday, May 3, 2017**

**11:30 a.m. – 1:00 p.m.**

**Meeting Location Change:**

**Contra Costa County**

**ZA Conference Room**

**30 Muir Road**

**Martinez, CA 94553**

**AGENDA**

<b><u>Topic</u></b>		<b><u>Status</u></b>
1. Public Comment		
2. Lower Walnut Creek Channel update	CCC (P. Detjens)	(I)
3. Update on the Knightsen Wetland Restoration and Flood Protection project	CCC/ECCCHC (M. Carlson/A. Fateman)	(I)
4. East Contra Costa County Habitat Conservancy 10 <sup>th</sup> Anniversary Summary	ECCCHC (A. Fateman)	(I)
5. LUPA for Black Diamond Mines	EBRPD (R. Breines)	(I)
6. AB 898	EBRPD (E. Pfuehler)	(I)
7. Storm Damage update	EBRPD (T. Margulici/J. Rasmussen)	(I)
8. Measure WW Local Grant Program update	EBRPD (T. Margulici/J. Rasmussen)	(I)
9. Set next meeting date		
(I) Information	(D) Discussion	(R) Recommendation

**Distribution Packets:**

**Open Space Liaison Committee Members:**

Supervisor Federal Glover (Chair), Supervisor Diane Burgis  
Beverly Lane, Colin Coffey, Dee Rosario

**EBRPD Staff:**

Robert E. Doyle, General Manager  
Dr. Ana M. Alvarez, Deputy General Manager  
Erich Pfuehler, Government Affairs Manager  
Yolande Barial Knight, Clerk of the Board  
Jeff Rasmussen, Assistant Finance Officer  
Tiffany Margulici, Grants Manager  
Bob Nisbet, Assistant General Manager, Acquisition / Stewardship / Development  
Brian Holt, Acting Chief of Planning/GIS  
Julie Bondurant, Principal Planner  
Raphael Breines, Acting Principal Planner

**Distribution Agenda Only:**

AGM's  
Sharon Clay, Clerk of the Board's Office  
Sabrina Pinell, Exec. Administrator, Acquisition /  
Stewardship / Development  
Mark Pearson, President, Local 2428  
Sgt. Tyrone Davis, Public Safety

**LOWER WALNUT CREEK CHANNEL UPDATE**  
**May 3, 2017**

Contra Costa County staff will provide a verbal review to inform discussion.

**UPDATE ON THE KNIGHTSEN WETLAND RESTORATION AND FLOOD  
PROTECTION PROJECT  
May 3, 2017**

Contra Costa County/ECCCHC staff will provide a verbal review to inform discussion.

**EAST CONTRA COSTA COUNTY HABITAT CONSERVANCY**  
**10TH ANNIVERSARY SUMMARY**  
**May 3, 2017**

The permits from US Fish and Wildlife and California Department of Fish and Wildlife were signed in mid-2007, and shortly thereafter the Conservancy initiated operation as the implementing entity of the East Contra Costa County Habitat Conservancy. As the Conservancy moves into its tenth year of operation, staff and our partner agencies and organizations are looking to mark the occasion with a number of activities. Many of the ideas for celebrating the Conservancy's 10 years were generated by the Conservancy's Public Advisory Committee.

These activities include:

**Signage:** "Preserved Forever" signs have been installed along the Vasco Road corridor to inform residents that the areas (on both sides of the road) have been acquired and conserved. An update on this activity was provided at the Conservancy's December 2016 meeting.

**Preserve Property Hikes:** Conservancy staff is collaborating with East Bay Regional Park District, Nomad Ecology, Save Mount Diablo and the California Native Plant Society – East Bay Chapter on hikes on Preserve System properties that are not currently open to the public. The hike leaders are all donating their time to these activities. The tentative hike schedule is:

- March 12 and 13: Byron-Vasco Area, *Hike Leader: Nomad Ecology*
- April 2: Smith Property, *Hike Leader: California Native Plant Society*
- April 9 and 10: Roddy Ranch, *Hike Leader: Nomad Ecology*
- May 13: Irish Canyon, *Hike Leader: Save Mount Diablo*
- June 4 and 5: Kreigor Peak Area, *Hike Leader: Nomad Ecology*
- July 22: Chaparral Spring, *Hike Leader: Save Mount Diablo*
- September 23: Hanson Hills, *Hike Leader: Save Mount Diablo*
- October 28: Thomas Home Ranch, *Hike Leader: Save Mount Diablo*
- Date TBD: Byron-Vasco Area – BYOH (Bring Your Own Horse), *Trail Ride Leader: TBD (this is a tentative event)*

These docent-led hikes are offered free to the public. Depending on the hike, the activity is limited to between 20 and 30 participants. The June 4th and 5th hikes in the Kreigor Peak Area will be more complicated than others. Staff is proposing to shuttle participants from a start location (likely Pittsburg City Hall) to the hike start which is approximately two-thirds of the way to the Peak. The shuttle route follows the same route taken for the Plan's permit signing ceremony. The route uses public roads, a closed county road (paved) and an EBPRD/Conservancy road (paved). This allows staff to coordinate a hike on the Preserve System that starts at a higher elevation and will be accessible to a larger audience. The hike will have spectacular views of the surrounding area and hopefully wildflowers. Hiking to this location for a larger group will be problematic due to time and pace of hikers. Staff anticipates spending some funds to rent vehicles to shuttle approximately 25 people on the two days. Initial estimates of the shuttle cost are approximately \$350 per day (renting three vans for one day). The current proposal is to run this event twice, so the total expenditure on vans would be approximately \$700.

**Photographs:** The Conservancy has teamed up with East Bay Regional Park District to hire Stephen Joseph to photograph the Preserve Properties. Mr. Joseph is a local photographer well known for his work documenting Mount Diablo and a long-time supporter of Bay Area conservation efforts. The photographs will be available for the Conservancy and East Bay Regional Park District to use in materials, presentations, and at events. The Conservancy's cost-share of this effort is \$5,000.

**Events:** Staff is working with implementation partners and the PAC to develop two events. The first event would be a large outdoor celebration for late September 2017. This is an opportunity to convene Federal, State and local partners as well as others involved in plan implementation. The second event would be smaller and is likely that the photos taken by Stephen Joseph of Preserve Properties will be on display. Staff will return to the Board with cost estimates and identified funding for hosting the proposed events.

## **LUPA FOR BLACK DIAMOND MINES**

### **May 3, 2017**

With its natural beauty, valuable wildlife habitat and rich history, Black Diamond Mines Regional Preserve (Preserve), located in east Contra Costa County, is one of the most unique and important interpretive parks in the regional park system. From 1853 to the early 1900s, 12 coal mines and several town sites were developed in the foothills north of Mount Diablo. For a time, the Mount Diablo Coal Field was the largest coal producing area in California, and the largest coal mine was Black Diamond Mine, which at its peak produced nearly 500 million pounds of coal, or black diamonds, annually. Mount Diablo Coal Field is listed on the state and national historic registers.

The East Bay Regional Park District (District) began acquiring land for the Preserve in 1973 and opened the park to the public in May 1976. Today, 4,667 acres of moderately to extremely steep ridges, peaks and valleys are open to the public. Since its establishment, the District has identified that the Preserve's greatest public value is in conserving and interpreting its natural and cultural resources, while providing low-intensity recreational opportunities. The Preserve contains a unique cultural landscape and landmarks, and features an underground mine open to the public, two visitor centers, guided tours, a historic cemetery, two campsites and over 47 miles of roads and trails.

In 2013, District staff initiated a land use plan amendment (LUPA) to formally incorporate into the Preserve and open to the public almost 5,000 acres of property that has been acquired over a span of more than 40 years, of which 3,246 acres have been purchased in partnership with the East Contra Costa County Habitat Conservancy (Conservancy). The Preserve is located within a segment of east Contra Costa County that has been designated a high priority conservation area by the Conservancy. The focus of the conservation strategy of the Conservancy is to develop a linked system of open space lands that preserve major habitat connections. The project site is part of the preserve system and the Conservancy is also currently preparing a site-specific management plan, known as a preserve management plan, for this area. The District and Conservancy continue to partner so that the LUPA and preserve management plan provide consistent management actions to ensure that habitat conditions are maintained and improved while providing public access.

The project also includes the 191-acre Arata/Moller property that was transferred to the District last year from Antioch Unified School District, completing the northern entrance and gateway to the Preserve. This property, a former dairy farm, contains an assortment of 31 structures, several of which provide the opportunity to re-purpose for staff and public use. Ten of the buildings have been determined to be contributing elements of a historic district potentially eligible for listing on the National Register of Historic Places. The District has identified that eight of the historic buildings will be re-purposed for staff and visitor use.

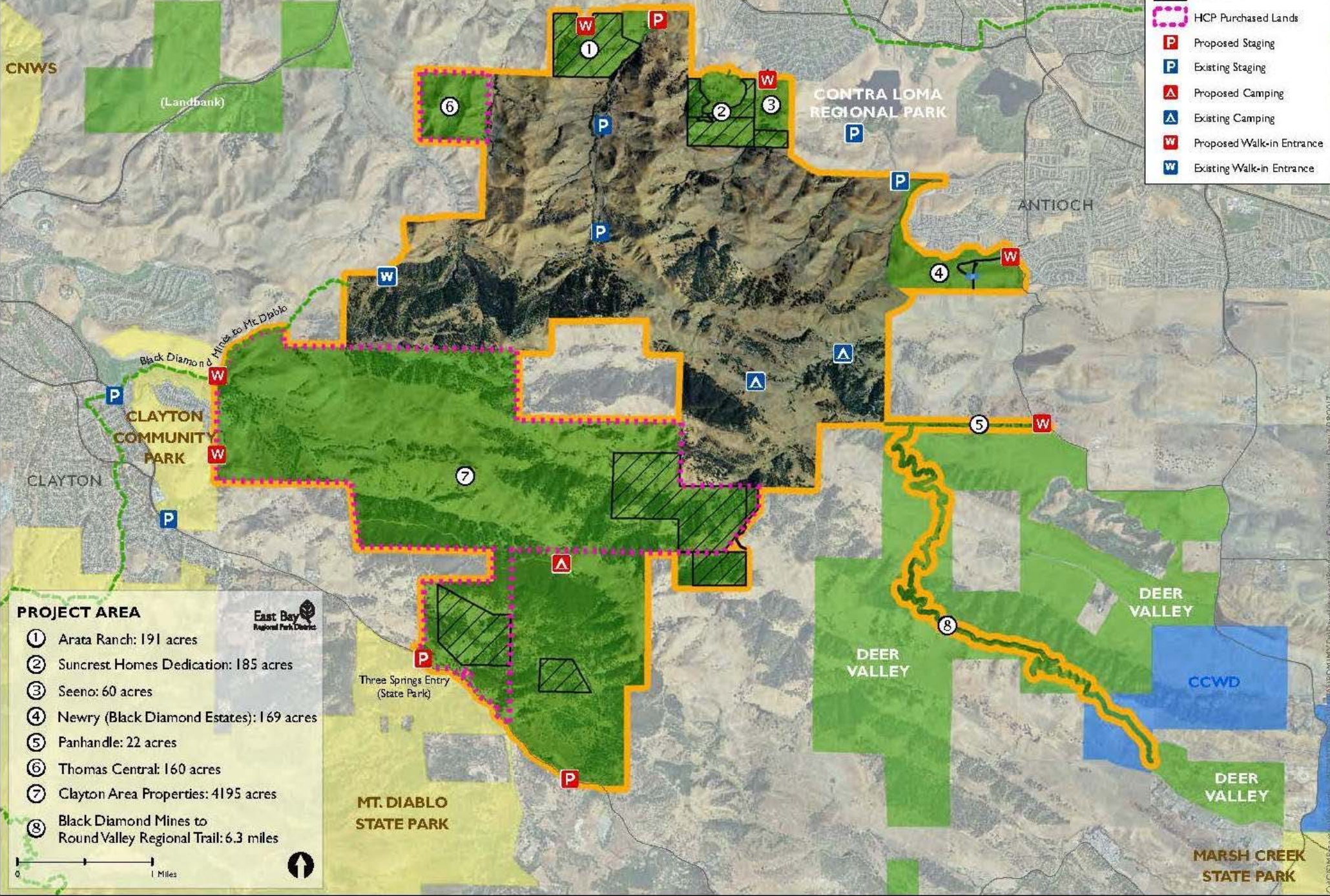
The LUPA is a long-range plan that includes resource management and protection and public use recommendations. Within a conservation framework, the LUPA includes the following major proposals:

- Develop two staging areas, several local access points, and a safe crossing of Marsh Creek Road to connect the Preserve and Mt. Diablo State Park;
- Transform the Arata/Moller Ranch to serve as a gateway to the Preserve, with parking and public and staff facilities, and provide space for indoor programming, to enhance visitors' experience and contribute to environmental and historical education;
- Develop a backpack campsite; and
- Open more than 40 miles of roads and narrow trails and construct new trail connections; the project also includes developing a 6.3-mile segment of the Black Diamond Mines to Round Valley Regional Trail east of the Preserve.

Attachment: Land Use Plan Amendment Black Diamond Mines Regional Preserve

# Land Use Plan Amendment Black Diamond Mines Regional Preserve

	Project Area
	Parkland
	Landbank
	Easements
	HCP Purchased Lands
	Proposed Staging
	Existing Staging
	Proposed Camping
	Existing Camping
	Proposed Walk-in Entrance
	Existing Walk-in Entrance



**PROJECT AREA**

- ① Arata Ranch: 191 acres
- ② Suncrest Homes Dedication: 185 acres
- ③ Seeno: 60 acres
- ④ Newry (Black Diamond Estates): 169 acres
- ⑤ Panhandle: 22 acres
- ⑥ Thomas Central: 160 acres
- ⑦ Clayton Area Properties: 4195 acres
- ⑧ Black Diamond Mines to Round Valley Regional Trail: 6.3 miles

0 1 Miles

15/18/2017 10:00 AM C:\Development\Projects\Black Diamond Mines\Map\Map\_Site\_Layout.mxd Date: 1/18/2017  
 C:\GIS\MapServer



**AB 898**  
**May 3, 2017**

**AB 898**

On April 4, Assembly Member Jim Frazier amended his spot bill, AB 898, to take \$10.5 million annually in ad valorem property tax revenue paid by Contra Costa residents to the Park District and redistribute them to the East Contra Costa Fire Protection District (ECCFPD). ECCFPD was established in 2002. The financial challenges resulting from the property tax revenues being “locked in” by Proposition 13 were identified by LAFCO at that time. As part of their approval of formation of the ECCFPD, LAFCO required the issues of local governance, inadequate service and insufficient funding be resolved by December of 2004. LAFCO staff, at the time of formation, concluded an independent fire district would not be feasible without a special tax. ECCFPD has tried unsuccessfully three times to pass a funding measure (2012, 2015 and 2016). The diversion of Park District revenue would be a legislative precedent: Rewarding local agencies who lack sufficient local voter support at the expense of those doing the job voters asked them to do. The Park District receives \$381,000 in property tax revenue from the ECCFPD region. The District receives about \$700,000 annually from a lighting and landscape district largely coterminous with the boundaries of ECCFPD. The District’s operational cost in this part of the county is about \$6 million. As it stands, East County residents are receiving a tremendous six to one return on investment – including \$2.3 million for Brentwood and \$1.5 million for Oakley from the Measure WW local grant program, and Big Break Regional Shoreline and Visitor Center at the Delta which attracts visitors and student groups throughout the region. To redirect funds from the District to another agency that has not developed broader electoral support is counter to the direction of the voters.

**AB 899**

Assembly Member Frazier’s fact sheet refers to AB 899 as a companion placeholder bill for an “election-based policy solution” in the event AB 898 should fail. AB 898 was amended on April 4 to reallocate \$10.5 million annually from the East Bay Regional Park District’s General Fund to the East Contra Costa Fire Protection District (ECCFPD). AB 899 is currently a spot bill which states the intent of the Legislature to enact legislation to provide for an election in Contra Costa County for the purpose of reallocating property tax revenues for fire protection services. The proposal is not entirely clear whether this would be an election to reallocate all property tax revenue in the county, just fire district property tax revenue, or if the election could be targeted specifically to reallocate Park District property tax revenue to ECCFPD. In any case, this is a legislative precedent which should concern all government agencies which rely on property tax funding.

**STORM DAMAGE UPDATE**  
**May 3, 2017**

Damage from the January and February 2017 Storms is estimated to exceed \$8,000,000 on over 70 sites.

Two major disasters have been declared for Alameda and Contra Costa Counties in 2017. Local governments, special districts, state agencies and certain non-profit organizations in the declared counties are therefore eligible to apply for Public Assistance funds from the FEMA.

On February 14, 2017, President Donald Trump declared a major disaster for Contra Costa and Alameda Counties for the incident time period January 3-12, 2017 (DR-4301). The Board of Directors authorized an application for FEMA Public Assistance for damage incurred in this disaster in March 2017 (Board resolution 2017-3-068). On April 1, 2017, President Donald Trump declared a second major disaster for 2017 in Alameda and Contra Costa Counties for the incident time period February 1-23, 2017 (DR-4308).

**MEASURE WW LOCAL GRANT PROGRAM UPDATE**  
**May 3, 2017**

The County has requested all but \$46,374 of its \$5,539,710 in funding from the WW Local Grant Program. The requests cover thirteen projects, six projects are in Community Service Areas and seven projects are in other unincorporated areas of the county not covered by another jurisdiction, see attached project list.

Attachment: WW Local Grant Report\_Unincorporated Contra Costa\_04.25.2017

## East Bay Regional Park District

WW Local Grant Program Projects as of 4/25/2017 for 314500 Unincorporated Contra Costa

CODE	PROJECT NAME	CONTRACT \$	STATUS	DATE	APPLIED	APPROVED	PAID	UNPAID	WARD	COUNTY
<b>314500</b>	<b>Unincorporated Contra Costa</b>	\$3,046,374.00	<b>ACTIVE</b>	2/1/2016					<b>7, 6, 1</b>	<b>Contra Costa</b>
314501	Iron Horse Corridor Improvements		APPROVED	6/22/2016	\$600,000.00	\$600,000.00		\$600,000.00	7, 6, 1	Contra Costa
314502	Pacheco Creekside Trail		APPROVED	6/22/2016	\$50,000.00	\$50,000.00	\$0.00	\$50,000.00	7, 6, 1	Contra Costa
314503	Tice Valley Pocket Park and Pathway		APPROVED	7/6/2016	\$600,000.00	\$600,000.00		\$600,000.00	7, 6, 1	Contra Costa
314504	Las Juntas Elementary Playfield Renovation		INCOMPLETE	5/26/2016	\$550,000.00				7, 6, 1	Contra Costa
314505	Urban Tilth Roots and Restoration Farm		INCOMPLETE	5/26/2016	\$500,000.00				7, 6, 1	Contra Costa
314506	Byron Union School District Family Playground		APPROVED	6/22/2016	\$600,000.00	\$600,000.00		\$600,000.00	7, 6, 1	Contra Costa
314507	Mira Vista Fields		INCOMPLETE	5/26/2016	\$100,000.00				7, 6, 1	Contra Costa
	<b>Total Available</b>	<b>\$46,374.00</b>			<b>Agency Totals</b>	<b>\$3,000,000.00</b>		<b>\$1,850,000.00</b>		
	<b>Grand Totals</b>	<b>\$3,046,374.00</b>				<b>\$3,000,000.00</b>		<b>\$1,850,000.00</b>		

## East Bay Regional Park District

WW Local Grant Program Projects as of 4/25/2017 for 313700 Clyde, M-16

CODE	PROJECT NAME	CONTRACT \$	STATUS	DATE	APPLIED	APPROVED	PAID	UNPAID	WARD COUNTY
<b>313700 Clyde, M-16</b>		\$36,321.00	<b>CLOSED</b>	4/20/2010					<b>7 Contra Costa</b>
313701	Clyde Parks Improvement Project		CLOSED	6/10/2013	\$36,321.00	\$36,321.00	\$36,321.00	\$0.00	7 Contra Costa
	<b>Total Available</b>	<b>\$0.00</b>		<b>Agency Totals</b>	<b>\$36,321.00</b>	<b>\$36,321.00</b>	<b>\$36,321.00</b>	<b>\$0.00</b>	
	<b>Grand Totals</b>	<b>\$36,321.00</b>			<b>\$36,321.00</b>	<b>\$36,321.00</b>	<b>\$36,321.00</b>	<b>\$0.00</b>	

## East Bay Regional Park District

WW Local Grant Program Projects as of 4/25/2017 for 314300 MonTaraBay, M-17

CODE	PROJECT NAME	CONTRACT \$	STATUS	DATE	APPLIED	APPROVED	PAID	UNPAID	WARD	COUNTY
<b>314300</b>	<b>MonTaraBay, M-17</b>	\$541,039.00	<b>ACTIVE</b>	4/20/2010					<b>1</b>	<b>Contra Costa</b>
314301	Montalvin and MonTaraBay Park Improvements		APPROVED	5/29/2014	\$541,039.00	\$541,039.00	\$111,669.86	\$429,369.14	1	Contra Costa
	<b>Total Available</b>	<b>\$0.00</b>		<b>Agency Totals</b>	<b>\$541,039.00</b>	<b>\$541,039.00</b>	<b>\$111,669.86</b>	<b>\$429,369.14</b>		
	<b>Grand Totals</b>	<b>\$541,039.00</b>			<b>\$541,039.00</b>	<b>\$541,039.00</b>	<b>\$111,669.86</b>	<b>\$429,369.14</b>		

## East Bay Regional Park District

WW Local Grant Program Projects as of 4/25/2017 for 313400 Alamo, R-7A

CODE	PROJECT NAME	CONTRACT \$	STATUS	DATE	APPLIED	APPROVED	PAID	UNPAID	WARD	COUNTY
<b>313400</b>	<b>Alamo, R-7A</b>	\$817,931.00	<b>ACTIVE</b>	4/20/2010					<b>6</b>	<b>Contra Costa</b>
313401	Livorna Park Bocce Courts		APPROVED	5/29/2014	\$817,931.00	\$817,931.00	\$349,025.82	\$468,905.18	6	Contra Costa
	<b>Total Available</b>	<b>\$0.00</b>			<b>\$817,931.00</b>	<b>\$817,931.00</b>	<b>\$349,025.82</b>	<b>\$468,905.18</b>		
	<b>Agency Totals</b>				<b>\$817,931.00</b>	<b>\$817,931.00</b>	<b>\$349,025.82</b>	<b>\$468,905.18</b>		
	<b>Grand Totals</b>	<b>\$817,931.00</b>			<b>\$817,931.00</b>	<b>\$817,931.00</b>	<b>\$349,025.82</b>	<b>\$468,905.18</b>		

## East Bay Regional Park District

WW Local Grant Program Projects as of 4/25/2017 for 314100 El Sobrante, R-9

CODE	PROJECT NAME	CONTRACT \$	STATUS	DATE	APPLIED	APPROVED	PAID	UNPAID	WARD	COUNTY
<b>314100</b>	<b>El Sobrante, R-9</b>	\$641,740.00	<b>ACTIVE</b>	4/20/2010					<b>1</b>	<b>Contra Costa</b>
314101	El Sobrante Mini-Park		APPROVED	5/29/2014	\$641,740.00	\$641,740.00	\$165,924.29	\$475,815.71	1	Contra Costa
	<b>Total Available</b>	<b>\$0.00</b>		<b>Agency Totals</b>	<b>\$641,740.00</b>	<b>\$641,740.00</b>	<b>\$165,924.29</b>	<b>\$475,815.71</b>		
	<b>Grand Totals</b>	<b>\$641,740.00</b>			<b>\$641,740.00</b>	<b>\$641,740.00</b>	<b>\$165,924.29</b>	<b>\$475,815.71</b>		



## East Bay Regional Park District

WW Local Grant Program Projects as of 4/25/2017 for 314400 Rodeo, R-10

CODE	PROJECT NAME	CONTRACT \$	STATUS	DATE	APPLIED	APPROVED	PAID	UNPAID	WARD COUNTY
<b>314400</b>	<b>Rodeo, R-10</b>	\$456,305.00	<b>ACTIVE</b>	4/20/2010					<b>7 Contra Costa</b>
314401	Lefty Gomez Park Improvements		APPROVED	6/10/2013	\$456,305.00	\$456,305.00	\$193,118.12	\$263,186.88	7 Contra Costa
	<b>Total Available</b>	<b>\$0.00</b>		<b>Agency Totals</b>	<b>\$456,305.00</b>	<b>\$456,305.00</b>	<b>\$193,118.12</b>	<b>\$263,186.88</b>	
	<b>Grand Totals</b>	<b>\$456,305.00</b>			<b>\$456,305.00</b>	<b>\$456,305.00</b>	<b>\$193,118.12</b>	<b>\$263,186.88</b>	