

(Event) Meeting Date - 10/19/07

**YOUR PARK IDEAS...**

**RECREATION FEATURES**  
(type and location)

Meeting # 5  
 1 concern about attracting more people to park.  
 - Expects more graffiti, crime, etc will distort staff park adequately?  
 2 EBRPD needs plan for increased use.

**SAFE PUBLIC USE**  
(type and location)

3 Dogs in marsh. Signage not well enforced.

4 southeast of banner parcel has lots of wildlife that will be impacted by Atlas Bridge + new access.

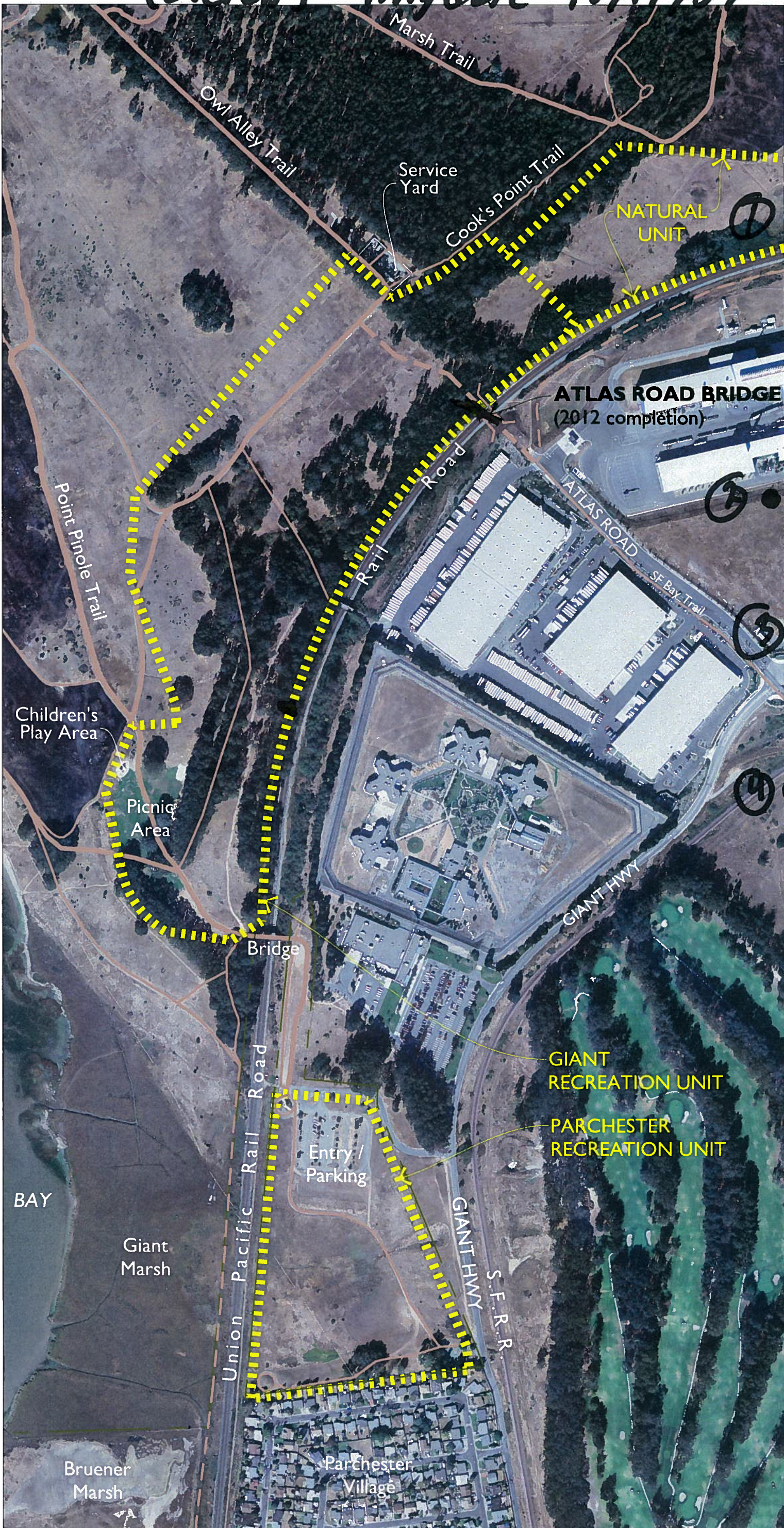
**BEAUTIFICATION**  
(type and location)

5 Need.  
 6 Buffer between rails + Parchester.  
 7 Has concern about tree cutting/trimming. Annoys him feelings of isolation when on trails.

Names: \_\_\_\_\_

Meeting Date:

<input type="checkbox"/> Wednesday, October 7, 3:30pm	<input type="checkbox"/> Thursday, October 15, 4pm
<input checked="" type="checkbox"/> Monday, October 19, 6:30pm	<input type="checkbox"/> Monday, October 26, 2pm



- Question about why utilities can be run to Percheater staging area.
- Interpretation Bldg. should be located as near the Atlas Bridge as possible. Least amount of road as possible.
- Preservation (as part of Beautification recommendations).
- Preserve dirt/natural trails in park.

(park)

- Would like to see Arisbee golf course~~ing~~ between parking lot + basketball court.
  - Access from parking lot down to marshes. Provide access to marsh in form of boardwalk trails.
  - Doesn't want new picnic areas in area where Atlas will enter banana parcel.
  - Dog park / Concern of losing off leash privileges with addition of more people.
- USE PARKING OR FENCE  
Buffer between Atlas
- Use parking or fence as buffer zone (at southeast boundary of banana parcel between Atlas Rd + Percheater Staging area bridge).
  - create variety of kiosk w/ interactive interpretive display
  - Question re: status of steel plant. (Follow-up).

- Concern about physical construction/safety of Badger bridge. And the safety of the area. ~~Comment out~~
- Better patrol of beach areas ~~that~~ which attract kids. Sometimes illegal behavior takes place. Inappropriate for kids
- Develop access from Brechester into Giant Marsh / Brewer Marsh.
- more educational ~~program~~ programming for birders.
- More interpretive info re: wildlife in the Bay. more here to replace what Crab Cove offers.
- More interp. about <sup>I.P.ing park.</sup> trees, flora.
- Add exercise / per course.

③. Elie. - recommended providing signage re: access through neighborhood in Brechester. District staff may need to arrange field trip through Brechester to confirm park access points

- Limit amount of parking that goes in for vehicle access.
- prefer wood benches over cement.
- <sup>Add</sup> more rec. opportunities to Brechester rec unit.
- Bicycle safety courses. More opportunities to introduce kids to biking in Pt. Pinole. Plug into annual festival / more where possible.
- Provide another way for people to respond to Prop 84 grant input process. Provide a clear contact point (person) for questions / input. Bulletin Board is ideal but location for more outreach.