

# YOUR PARK IDEAS...

## RECREATION FEATURES

(type and location)

*\* Link new picnic areas w/ play areas for families*

## SAFE PUBLIC USE

(type and location)

*\* - Says Tide Tables are no longer posted locally by bulletin board*

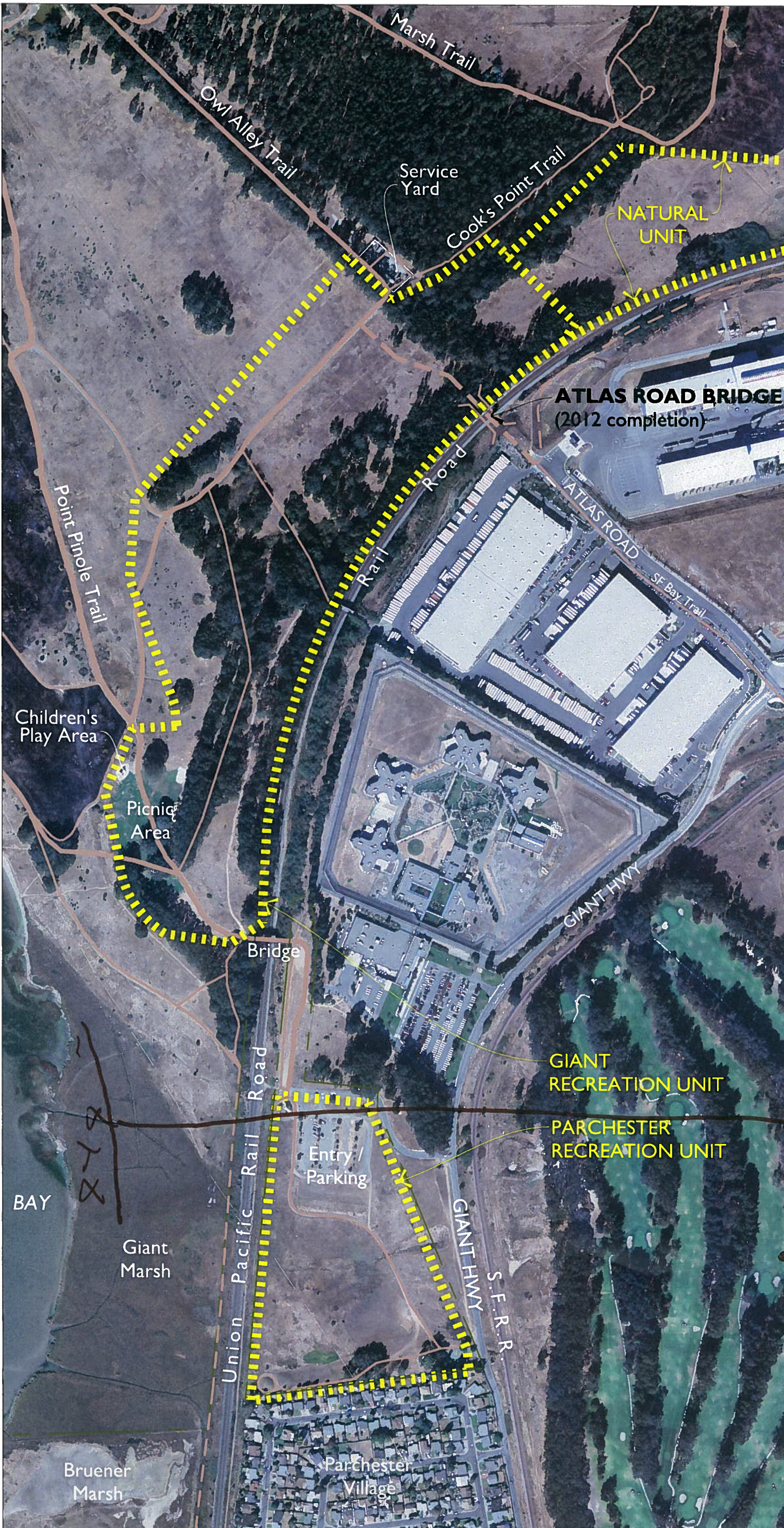
*\* Howard - Volunteer Opportunities - CONTACT*

*\* Interpret Viewsheds <sup>signs</sup> MORE (Across Bay)*

## BEAUTIFICATION

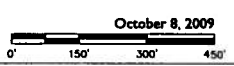
(type and location)

*\* Interpret Filings in water.*  
*\* provide <sup>comprehensive</sup> overlay of where interpretive features are. (Brochure) History*



Point Pinole Regional Shoreline  
**Community Based Planning Meeting Map**  
 Parchester Community Center

- Legend**
- Land Use Designation
  - EBRPD Parcel Boundary
  - EBRPD Trails
  - SF Bay Trail - Proposed
  - Hayward Fault



**Names:**

---

**Meeting Date:**

<input type="checkbox"/> Wednesday, October 7, 3:30pm	<input checked="" type="checkbox"/> Thursday, October 15, 6pm
<input type="checkbox"/> Monday, October 19, 6:30pm	<input type="checkbox"/> Monday, October 26, 2pm