

## COME PLAY TODAY . . .

Roberts Regional Recreation Area opened for public recreation and enjoyment in 1953. The park was named to honor Thomas J. "Tommy" Roberts, who at that time had served as secretary to the East Bay Regional Park District board of directors for 19 years. He continued to serve on the board until his death in 1958 at age 95.

**PARK FEATURES** This 100-acre area is a popular place for family and group picnicking. It is known for its lush setting in a grove of fragrant second-growth redwood trees off Skyline Boulevard in Oakland. The original grove was logged between 1840 and 1860 to support the needs of a growing Bay Area community.

In addition, Roberts Regional Recreation Area features a baseball field, sand volleyball court, playfields and a childrens' play area (all available on a first-come, first-served basis).

**SWIMMING** The Roberts Pool complex features a 25-yard, heated swimming pool with a depth of 3 feet to 8.5 feet (no diving board). In addition, the complex is fully accessible to individuals with disabilities, including the bathhouse and a lift into the pool capable of lifting up to 300 pounds.

The pool is open to the public from April through October with varying days and times of operation. For current hours of operation call (510) 482-0971. Programs offered at the pool include group and private swim lessons, recreational swim, lap swimming, and a special time set aside for disabled swimmers only. The pool is also available for rent to groups wishing to have a swim party or other group function. For information about swim programs or pool rental, call (510) 636-1684. Swim fees: \$3 ages 16-61; \$2 ages 1-15, ages 62 and above, and the disabled; under 1 year free. **SWIM FEES ARE SUBJECT TO CHANGE**, call (510) 636-1684 for information.

**TRAILS** Trail connections from the Roberts area to other sections of Redwood Regional Park make Roberts popular for bicyclists, joggers, runners and hikers. A map of Redwood Regional Park is available on request by phoning (510) 544-2203.

**BUS SERVICE** Call public transit information at 817-1717 (TDD/TTY: 1-800-448-9790), or go to [www.transitinfo.org](http://www.transitinfo.org), to confirm the following bus schedule information: AC Transit #53 runs to Roberts Regional Recreation Area and the Chabot Space and Science Center weekdays and weekends. The bus also stops at Joaquin Miller Road and Skyline Blvd. for access to the trailhead at the the former EBRPD headquarters (11500 Skyline Blvd.). From behind the former headquarters building, trail users can access the trails in Redwood Regional Park.

**PICNICKING** There are nine reservable reservable picnic areas in the Roberts area: Huckleberry, Bay Vista, Manzanita, Diablo Vista, Sycamore, Madrone, Oak, Anna Costa, and Redwood Bowl. Madrone is also popular for weddings. Make your reservations a minimum of 14 days in advance by writing, phoning, or faxing EBRPD Reservations, 2950 Peralta Oaks Court, P.O. Box 5381, Oakland, CA 94605-0381, (510) 636-1684, FAX (510) 635-3478.

**THE REDWOODS** Because the Roberts entrance and parking area are in a grove of redwoods, it has proved to be a popular stop for tourists. This is the best access to redwoods for visitors who cannot hike a long distance or have failed to pack their favorite hiking shoes. Drop by for a moment . . . you'll want to stay longer.

The famous "landmark trees" were located in Roberts; their location is marked by state historic plaque #962 near the Madrone picnic area. These were two giant redwoods used by sailors as navigational aids to avoid the treacherous Blossom Rock, submerged in the bay between Alcatraz Island and San Francisco. Captain F. Beechey of the Royal Navy noted in his log (1826) that in order to miss the rock, one should line up the northern tip of Yerba Buena Island with "two trees . . . south of Palos Colorados . . . too conspicuous to be overlooked." The distance from the sailors' ships to these trees was 16 miles, which attests to their size. Historical records indicate that the redwoods in this area ranged up to 20 feet or more in diameter.

Another redwood grove can be reached by entering Redwood Regional Park at the main entrance gate, two miles east of Skyline Boulevard on Redwood Road. Leave your car in the parking area and stroll along Stream Trail through the shady canyon.

**ADOPT-A-PARK** Early in 1979 Roberts became the first park in the two-county Regional Park District to be "adopted" by a local industry. An ongoing partnership was formed with Kaiser Aluminum & Chemical Corporation, tapping the financial and human resources of the worldwide, Oakland-based firm to assure the continued operation of this popular urban parkland.

The Adopt-A-Park program was developed in July 1978 after California citizens voted to change the state's tax structure, resulting in funding cutbacks for special districts and public agencies like EBRPD that were primarily dependent on property taxes for operation. For more information on how to help the District maintain its current parklands and services, contact the Public Affairs Department at the address listed at right.

**PARKING FEE** There is a \$4 per vehicle seasonal parking fee at Roberts. **PARKING FEES ARE SUBJECT TO CHANGE**, call the park for fee information.



East Bay Regional Park District  
2950 Peralta Oaks Court, P.O. Box 5381  
Oakland, CA 94605-0381 (510) 562-PARK

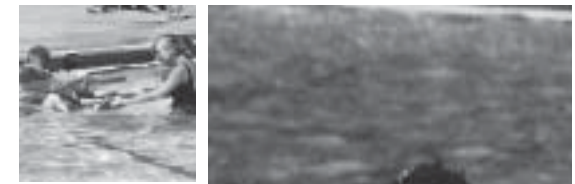
Alameda Creek Quarries Regional Recreation Area  
Alameda Creek Regional Trail  
Anthony Chabot Regional Park  
Antioch Regional Shoreline  
Ardenwood Regional Preserve  
Bishop Ranch Regional Open Space  
Black Diamond Mines Regional Preserve  
Black Diamond-to-Mt. Diablo Trail  
Briones Regional Park  
Briones-to-Las Trampas Regional Trail  
Briones-to-Mt. Diablo Regional Trail  
Brooks Island Regional Shoreline  
Browns Island Regional Shoreline  
California Hiking and Riding Trail  
Carquinez Strait Regional Shoreline  
Claremont Canyon Regional Preserve  
Contra Costa Canal Regional Trail  
Contra Loma Regional Park  
Coyote Hills Regional Park  
Crown Memorial State Beach  
Cull Canyon Regional Recreation Area  
Del Valle Regional Park  
Diablo Foothills Regional Park/Castle Rock Regional Recreation Area  
Don Castro Regional Recreation Area  
Dry Creek Pioneer Regional Park  
East Bay Skyline National Recreation Trail  
Garin Regional Park  
Hayward Regional Shoreline  
Huckleberry Botanic Regional Preserve  
Iron Horse Regional Trail  
Kennedy Grove Regional Recreation Area  
Lafayette-Moraga Regional Trail  
Lake Chabot Regional Park  
Las Trampas Regional Wilderness/Little Hills Regional Recreation Area  
Las Trampas-to-Mt. Diablo Regional Trail  
Leona Heights Regional Open Space  
Marsh Creek Regional Trail  
Martin Luther King, Jr., Regional Shoreline  
Martinez Regional Shoreline  
Miller/Knox Regional Shoreline  
Mission Peak Regional Preserve  
Morgan Territory Regional Preserve  
Ohlone Wilderness Regional Trail  
Ohlone Regional Wilderness  
Old Moraga Ranch Regional Trail  
Oyster Bay Regional Shoreline  
Pleasanton Ridge Regional Park  
Point Isabel Regional Shoreline  
Point Pinole Regional Shoreline  
Redwood-to-Las Trampas Regional Trail  
Redwood Regional Park/Roberts Regional Recreation Area  
Round Valley Regional Park  
San Pablo Bay Regional Shoreline  
Shadow Cliffs Regional Recreation Area  
Sibley Volcanic Regional Preserve  
Sobrante Ridge Regional Preserve  
Sunol Regional Wilderness  
Tassajara Creek Regional Park  
Temescal Regional Recreation Area  
Tilden Regional Park  
Tilden-to-Briones Regional Trail  
Wildcat Canyon Regional Park



Printed on recycled paper Rev. 5/03 Cost: 50 cents

# ROBERTS

## REGIONAL RECREATION AREA



EAST BAY REGIONAL PARK DISTRICT