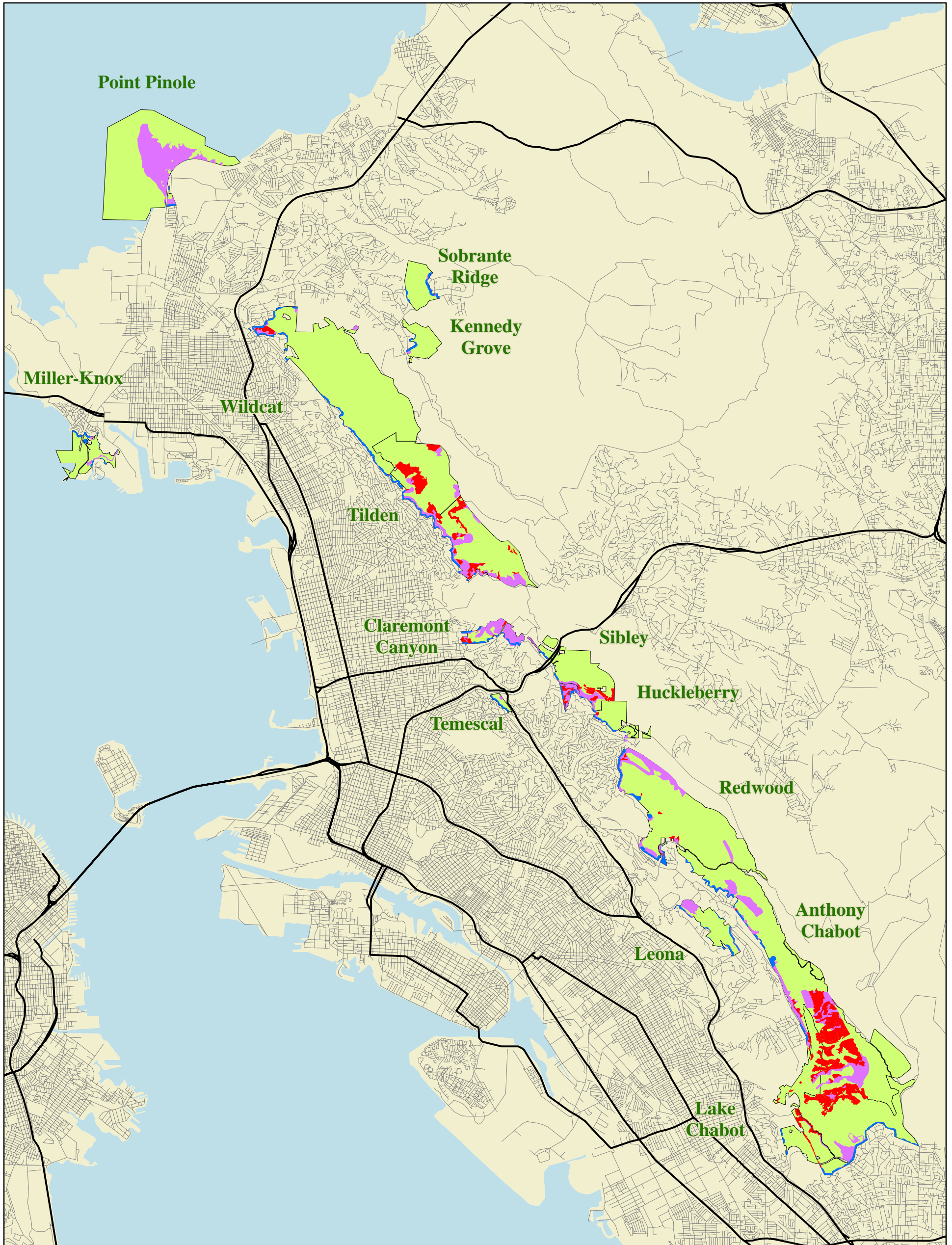


East Bay Regional Park District Draft Wildfire Hazard Assessment



LSA



0 5,000 10,000
FEET

1 INCH EQUALS 10,000 FEET

WILDFIRE HAZARD ASSESSMENT AREAS

- WITHIN 200 FEET OF PRIVATE STRUCTURES
- HIGH-RISK EUCALYPTUS
- OTHER WILDFIRE HAZARD ASSESSMENT AREAS

*East Bay Regional Park District
Wildfire Hazard Reduction Management Plan*

December 12, 2007