

# **KENNEDY GROVE - KG002**

## **FUELS MANAGEMENT PRESCRIPTION**

### **SITE DESCRIPTION AND LOCATION:**

The treatment area is 4.5 acres located to the east of the grassy area between Kennedy Loop Trail and Laurel Loop Trail. Existing vegetation on the site is primarily dense eucalyptus with an understory of bay trees.

### **VEGETATION MANAGEMENT GOALS:**

Eucalyptus overstory

### **FUELS MANAGEMENT OBJECTIVE:**

1. Reduce fuel volume and the intensity of wildland fires in the area by reducing ladder fuels and surface fuels.
2. Thin the eucalyptus stands to reduce the potential for crown fires and ember dissemination.

### **RESOURCE OBJECTIVES AND CONSIDERATIONS:**

- Conduct all initial work during the period from July 31<sup>st</sup> to Jan. 31<sup>st</sup> to avoid disturbance to nesting raptors and song birds, as recommended by the District's biologist. If work will occur during nesting season, Stewardship will conduct a pre-work nesting survey within 15-days of work beginning and flag any buffer sites around identified nests.
- Conduct surveys and treatment activities in oak and bay habitat to identify and avoid dusky-footed woodrat nests. Any nest will have a buffer zone described by the current protocol developed by Stewardship.
- Conduct all operations to avoid unnecessary damage to boles, roots, and crowns of residual eucalyptus trees, native trees/seedlings and vegetation.

### **FUELS TREATMENT PRESCRIPTION:**

#### Initial Treatment

Remove eucalyptus trees under 10" dbh and dispose of all material offsite, including branches and tops. To minimize ground disturbance, heavy equipment and other vehicles should remain on fire trails wherever feasible. Cut stumps as close as possible to ground level. Per the District's Integrated Pest Management pest control recommendation, eucalyptus stumps will be treated with herbicides by a certified applicator within one hour of cutting to prevent re-sprouting.

Selectively remove bay trees less than 8 inches in diameter, targeting specimens that are growing immediately adjacent to eucalyptus. Limb up redwoods and residual bays up to approximately 6 feet from the forest floor. All cut material will be removed and disposed of offsite.

Remove accumulations of surface fuels such as forest litter, downed logs, branches, bark, and leaves, with minimal disturbance to duff layer. Logs determined to be imbedded in the soil will be left in place.

**Hazard Trees**

Though not necessarily posing a significant fuels management problem, hazard trees along Laurel Loop or close to the lawn area should be assessed by park staff and treated appropriately.

Follow-up/Maintenance (Note: if initial treatment is spread over more than one year, adjust the maintenance schedule as needed to accommodate)

YEAR	FUELS TREATMENT
01	Initial Treatment.
02-03	Remove eucalyptus seedlings and treat eucalyptus resprouts with herbicide.
04	Monitor site for weed invasion; remove or treat weeds with herbicide.
05	Reduce/remove ladder and surface fuels that have accumulated since year 1. Remove eucalyptus seedlings, cut eucalyptus sprouts, and treat with herbicide. Monitor site for other weed invasion; remove or treat weeds with herbicide.
10	Reduce/remove ladder and surface fuels that have accumulated since year 1. Remove eucalyptus seedlings, cut eucalyptus sprouts, and treat with herbicide.
15	Reduce/remove ladder and surface fuels that have accumulated since year 1. Remove eucalyptus seedlings, cut eucalyptus sprouts, and treat with herbicide.
20	Reduce/remove ladder and surface fuels that have accumulated since year 1. Remove eucalyptus seedlings, cut eucalyptus sprouts, and treat with herbicide.
25	Reduce/remove ladder and surface fuels that have accumulated since year 1. Remove eucalyptus seedlings, cut eucalyptus sprouts, and treat with herbicide.
30	Reduce/remove ladder and surface fuels that have accumulated since year 1. Remove eucalyptus seedlings, cut eucalyptus sprouts, and treat with herbicide.

**MONITORING:**

Staff from the District's Fire Department, Planning/Stewardship, and Operations will evaluate the success and efficacy of the initial and follow-up fuels treatments. Monitoring results will be documented.

**PRESCRIPTION PREPARED BY:**

Brad Gallup  
Fire Captain, EBRPD

[Signature]  
Signature

8/21/12  
Date

**REVIEW AND APPROVAL:**

This prescription meets the District's standards for fuels management, natural resource protection and achievement of Best Management Practices according to the Wildfire Hazard Reduction and Resource Management Plan and is consistent with the mitigation measures contained in the EIR:

John R. Swanson  
for Fire Chief, EBRPD

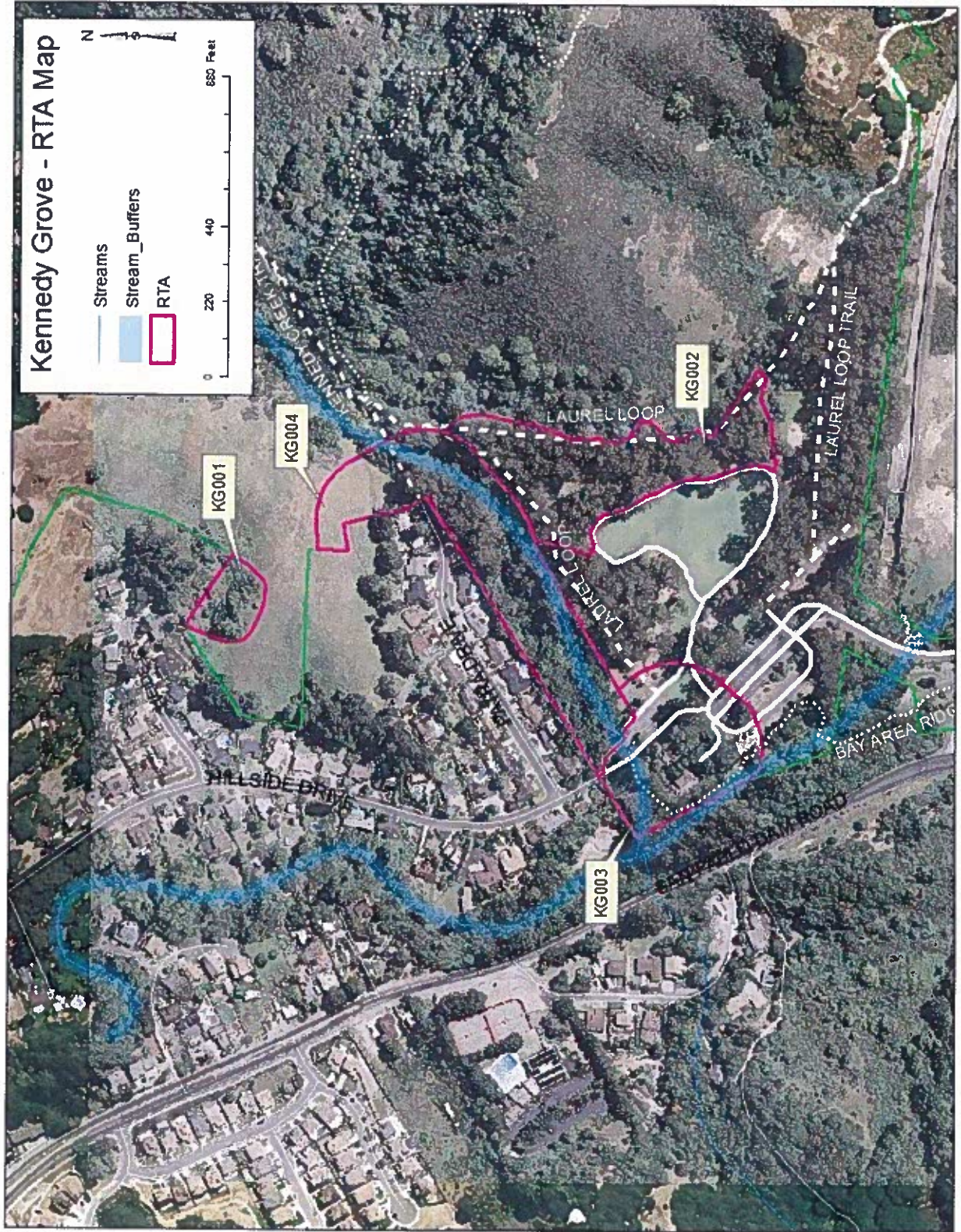
[Signature]  
Signature

08.23.2012  
Date

NEAL FUJITA  
Stewardship Manager, EBRPD

[Signature]  
Signature

8/23/12  
Date



Kennedy Grove KG002 Fuels Management Prescription  
8/21/2012