

FUELS MANAGEMENT PRESCRIPTION LEONA, HANSON DR LE004

SITE DESCRIPTION AND LOCATION:

This 9.7 acre site is located on a steep slope below homes and adjacent to the Leona Regional Open Space. Access is located on Pine Crest Dr through the area's entrance gate.

VEGETATION MANAGEMENT GOALS:

Perennial grasses and scattered coastal scrubs with oak-bay woodland.

FUELS MANAGEMENT OBJECTIVES:

- Maintain this unit so as to generate a flame length of 8 feet or less and to reduce the potential for crowning and sustained crown fire under 97th percentile weather conditions.
- Reduce fuel volume in the area behind homes to reduce the intensity of wildland fires and to enhance the existing fuel break.
- Thin the understory and reduce ground surface fuels to help reduce the potential for crown fires and ember dissemination.

RESOURCE OBJECTIVES AND CONSIDERATION:

- Conduct all initial work during the period from July 31st to Jan. 31st to avoid disturbance to nesting raptors and song birds, as recommended by the District's biologist. If work will occur during nesting season, Stewardship will conduct a pre-work nesting survey within 15-days of work beginning and flag any buffer sites around identified nests.
- Conduct surveys and treatment activities in a manner that will minimize potential adverse effects to Alameda whipsnakes. At rocky outcrops, or within grasslands, work may occur between Oct. 31st and April 1st. If work occurs outside this window, a biological monitor must be present for all activities on site.
- Conduct surveys and treatment activities in oak and bay habitat to identify and avoid dusky-footed woodrat nests. Any nest will have a buffer zone described by the current protocol developed by Stewardship.
- Install erosion control measures if needed in areas where duff has been removed.
- Preserve native vegetation where possible, especially oak and bay trees.

FUELS TREATMENT PRESCRIPTION:

Maintenance Treatment

Spring--Hand labor techniques including weed whipping used annually after grasses have dried or cured so that the grass does not grow back. This technique reduces the height of the fuel, but does not create areas of bare soil, as vegetation is not completely removed. Use chainsaws to cut and remove brush and ladder fuels. Branches and material cut from brush can then be further broken into compact brush piles. Pile burning will be done in selected areas deemed safe and downwind from structures. Use hand tools to clear a fire control line around the piles edges and cut a shallow trench at the base of the burn pile to catch any burned material that would inadvertently roll down slope. After burning is accomplished, the soils under the piles would be slightly cultivated to break up the soil and mix in nutrients. A burn notice would be provided to the Bay Area Air Quality Management District (BAAQMD) and burns would only take place on designated "Burn Days".

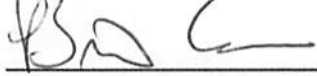
Follow-up/Maintenance

YEAR	FUELS TREATMENT
01	Weed whipping annual grasses, remove ladder fuels, burn piles
02	Weed whipping annual grasses, remove ladder fuels, burn piles
03	Weed whipping annual grasses, remove ladder fuels, burn piles
04	Weed whipping annual grasses, reduce fuel height
05	Weed whipping annual grasses, reduce fuel height
06	Weed whipping annual grasses, reduce fuel height
07-30	Weed whipping annual grasses, reduce fuel height

MONITORING:

Staff from the District's Fire Department, Planning/Stewardship, and Operations will evaluate the success/efficacy of the initial and follow-up fuels treatments.

PRESCRIPTION PREPARED BY:



 Fire Captain, EBRPD Signature

June 20, 2012

 Date

REVIEW AND APPROVAL: I certify that this prescription meets the District's standards for fuels management, natural resources protection and achievement of best management practices according to the Wildfire Hazard Reduction and Resource Management plan and is consistent with the mitigation measures contained in the EIR.



 Fire Chief, EBRPD Signature

JOHN R. SWANSON 07.26.2012

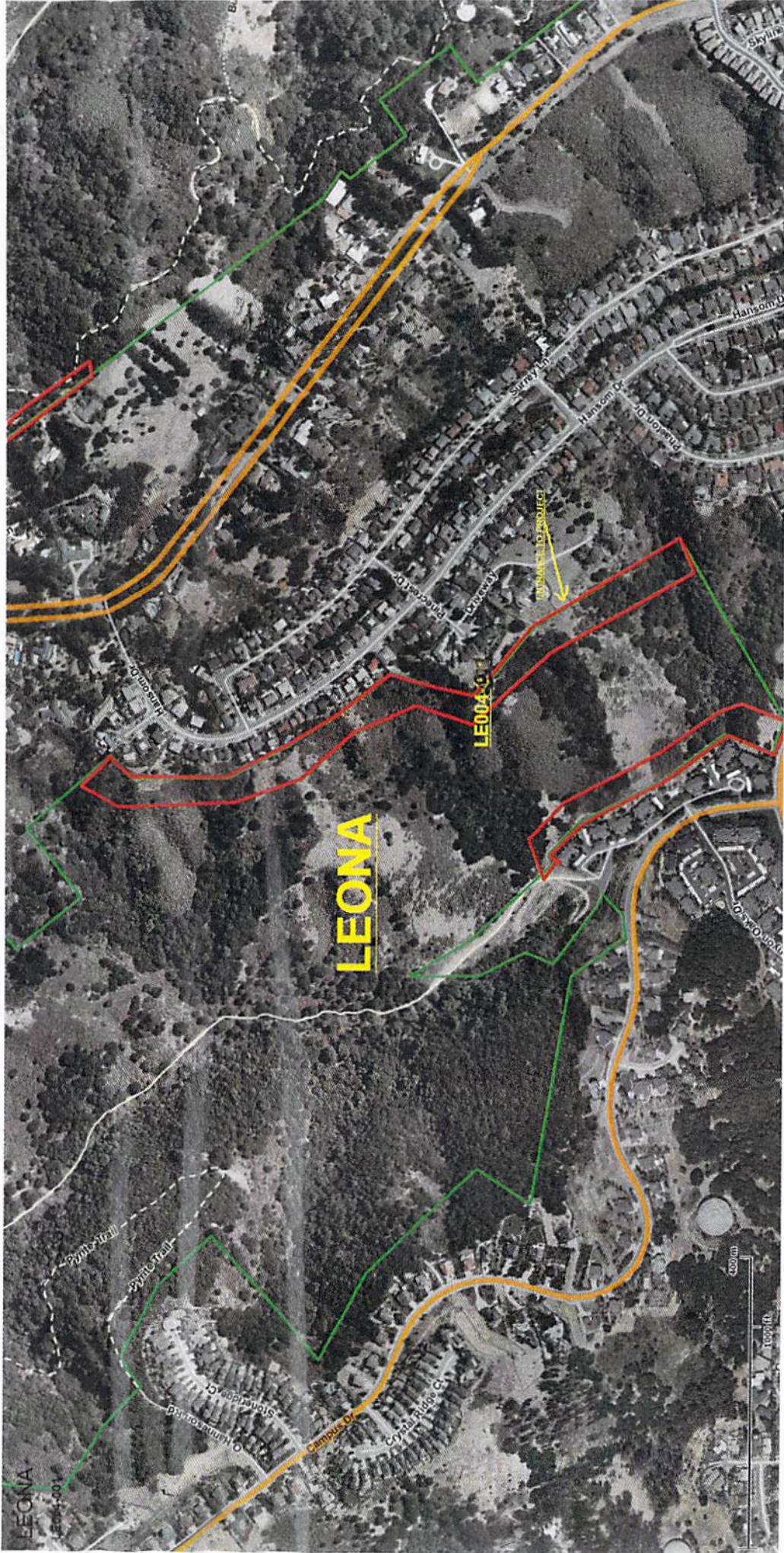
 Date

NEAL FUJITA

 Stewardship Manager, EBRPD Signature

7/8/12

 Date



LEONA

LE004 CT

CONTRACT TO PROJECT

LEONA
LE004-001

