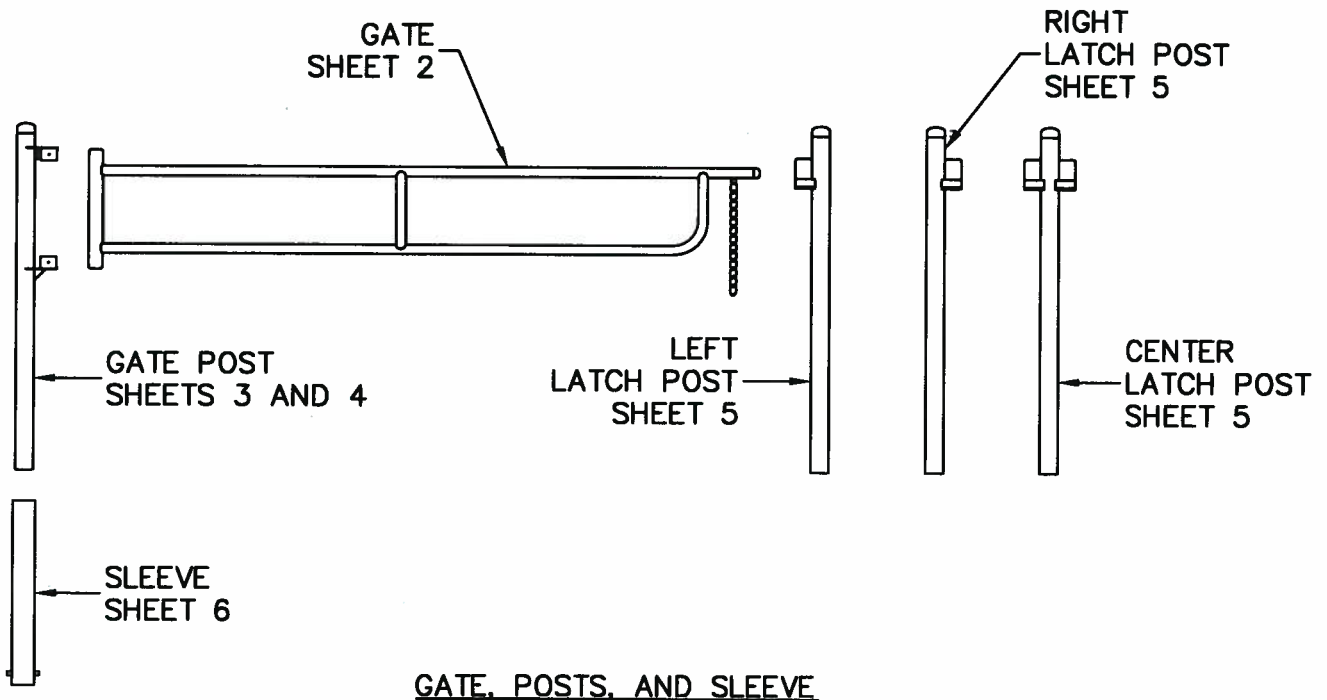


NOTES:

1. PIPE SHALL BE ASTM 53, GRADE B, UNFINISHED STEEL.
2. PIPE FOR GATE AND POSTS SHALL BE SCHEDULE 40 (STANDARD WEIGHT).
3. PIPE FOR SLEEVE SHALL BE SCHEDULE 80 (EXTRA STRONG WEIGHT).
4. STEEL ANGLE, PLATE, AND BAR SHALL BE ASTM A36.
5. PIPE CAPS SHALL BE SCHEDULE 40 (STANDARD WEIGHT), BUTT WELD TYPE, WITH BEVELED EDGE.
6. FASTENERS SHALL BE HOT-DIP GALVANIZED PER ASTM A153.
7. PRIOR TO HOT-DIP GALVANIZING, REMOVE BURRS FROM DRILLED AND CUT PIECES, RADIUS CORNERS, REMOVE SLAG FROM WELDS, GRIND WELDS SMOOTH, GRIND PIPE CAP WELDS FLUSH AND SMOOTH, EASE OUTSIDE EDGES OF PIPE GATE, AND EASE INSIDE EDGES OF TOP AND BOTTOM CUPS.
8. ALL STEEL SHALL BE HOT-DIP GALVANIZED AFTER FABRICATION IN ACCORDANCE WITH ASTM A123. WATER QUENCHING FOR CHROMATE CONVERSION COATING SHOULD BE AVOIDED AS THESE PROCESSES INTERFERE WITH PAINT ADHESION AND SURFACE PREPARATION. REFER TO ASTM D6386, STANDARD PRACTICE FOR PREPARATION OF ZINC (HOT-DIP GALVANIZED) COATED IRON AND STEEL PRODUCT FOR PAINTING.
9. AFTER GALVANIZATION AND PRIOR TO SHIPPING, FABRICATOR SHALL CHECK THAT THE GATE ROTATES FREELY IN THE GATE POST BOTTOM CUP WITH THE TOP CUP BOLTED IN PLACE. TO ASSURE FREE ROTATION, GALVANIZING THICKNESS AT THESE MATING PARTS SHALL BE HELD TO A MINIMUM AND/OR EXCESS GALVANIZING MAY BE GROUND OFF.
10. EXCEPT WHERE NOTED ON SLEEVE, PRIME AND PAINT ALL STEEL "EBRPD BROWN METAL" PER STD PLAN 003 PAINT SPECIFICATION.



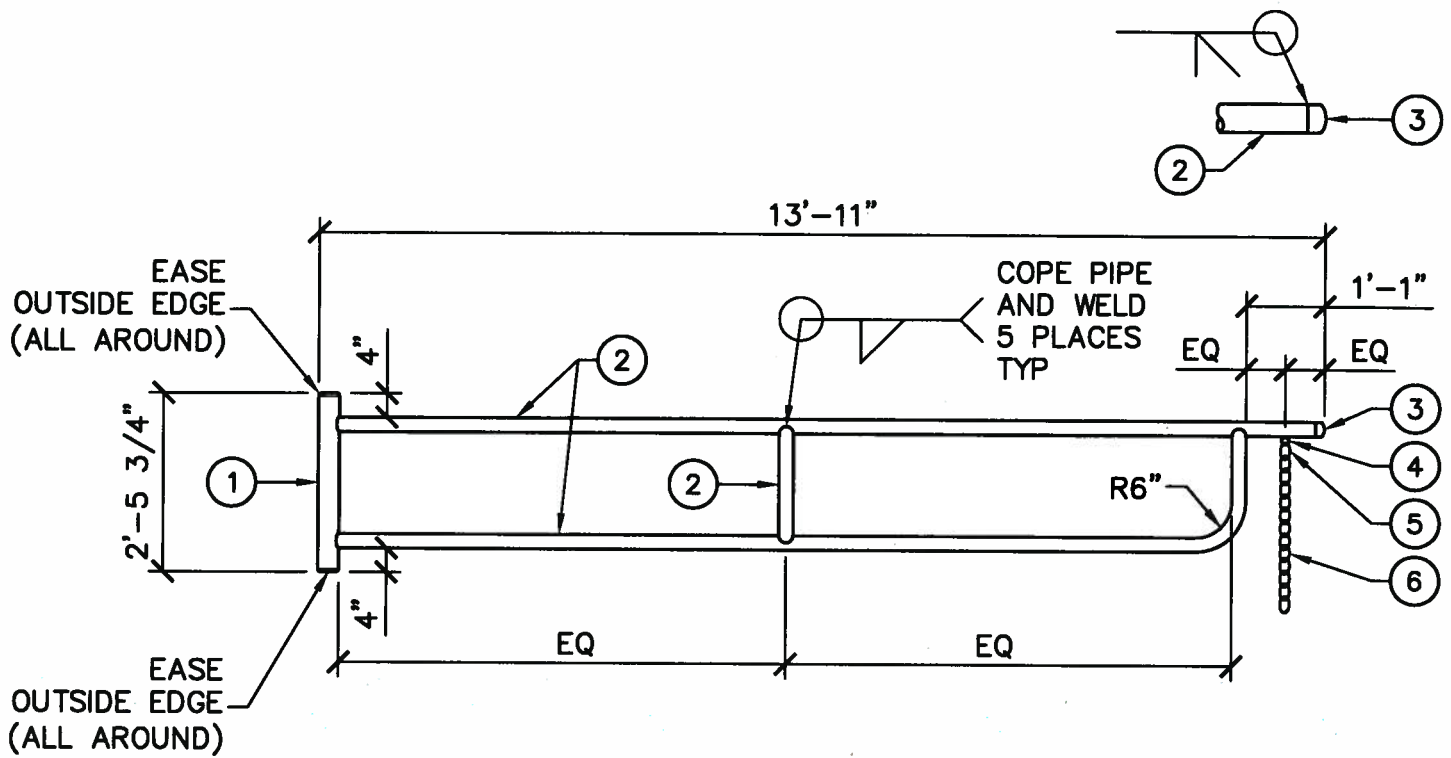
PIPE GATE - FABRICATION

DRAWN	CR	KEY	REVISIONS	DATE	APPROVED
CHECKED	LB	△	ORIGINAL ISSUE	02-04-16	<i>[Signature]</i>
OPERATIONS	DC				ROB LIM, PE, CHIEF OF DESIGN & CONSTRUCTION
					DATE 2/12/16

STD PLAN

380

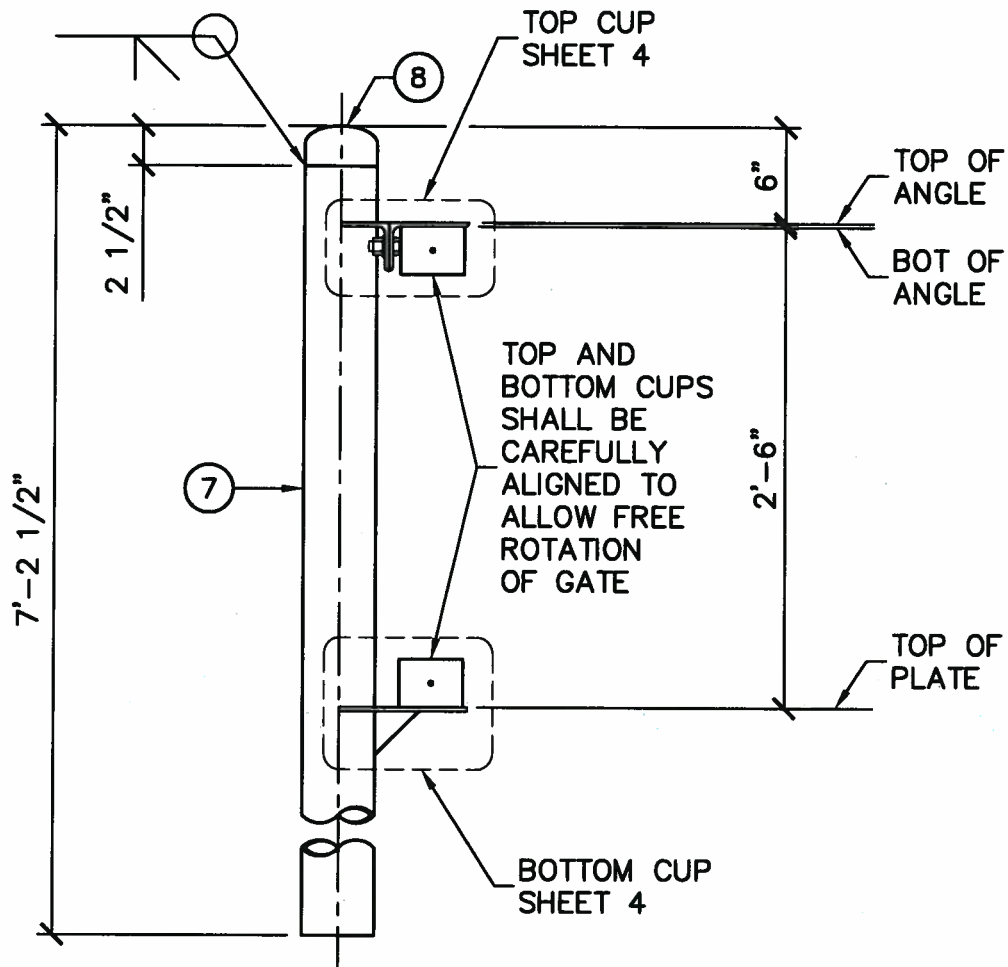
SHEET 1 OF 6
NOT TO SCALE



GATE PARTS					
PART	DESCRIPTION	NOMINAL SIZE	WEIGHT	OUTSIDE DIAMETER	INSIDE DIAMETER
①	PIPE	3"	STANDARD	3.50"	3.07"
②	PIPE	2"	STANDARD	2.38"	2.07"
③	PIPE CAP	2"	STANDARD	2.38"	2.07"
④	3/4" ID FORGED STEEL PAD EYE OR SHOULDER EYEBOLT, FILLET WELD SHOULDER ALL AROUND AND GRIND SMOOTH				
⑤	3/8" HOT-DIP GALVANIZED PEEN TYPE OVAL CONNECTING LINK				
⑥	3/8" REGULAR LINK (1.30" INSIDE LENGTH) X 27" LONG, GRADE 43 HOT-DIP GALVANIZED HIGH-TEST STEEL CHAIN				

GATE

	PIPE GATE - FABRICATION					STD PLAN
	DRAWN	CR	KEY	REVISIONS	DATE	APPROVED <i>[Signature]</i>
	CHECKED	MS	△	ORIGINAL ISSUE	02-04-16	ROB LIM, PE, CHIEF OF DESIGN & CONSTRUCTION
	OPERATIONS	DC				DATE 2/12/16
EAST BAY REGIONAL PARK DISTRICT – STANDARD PLANS						380 SHEET 2 OF 6 NOT TO SCALE

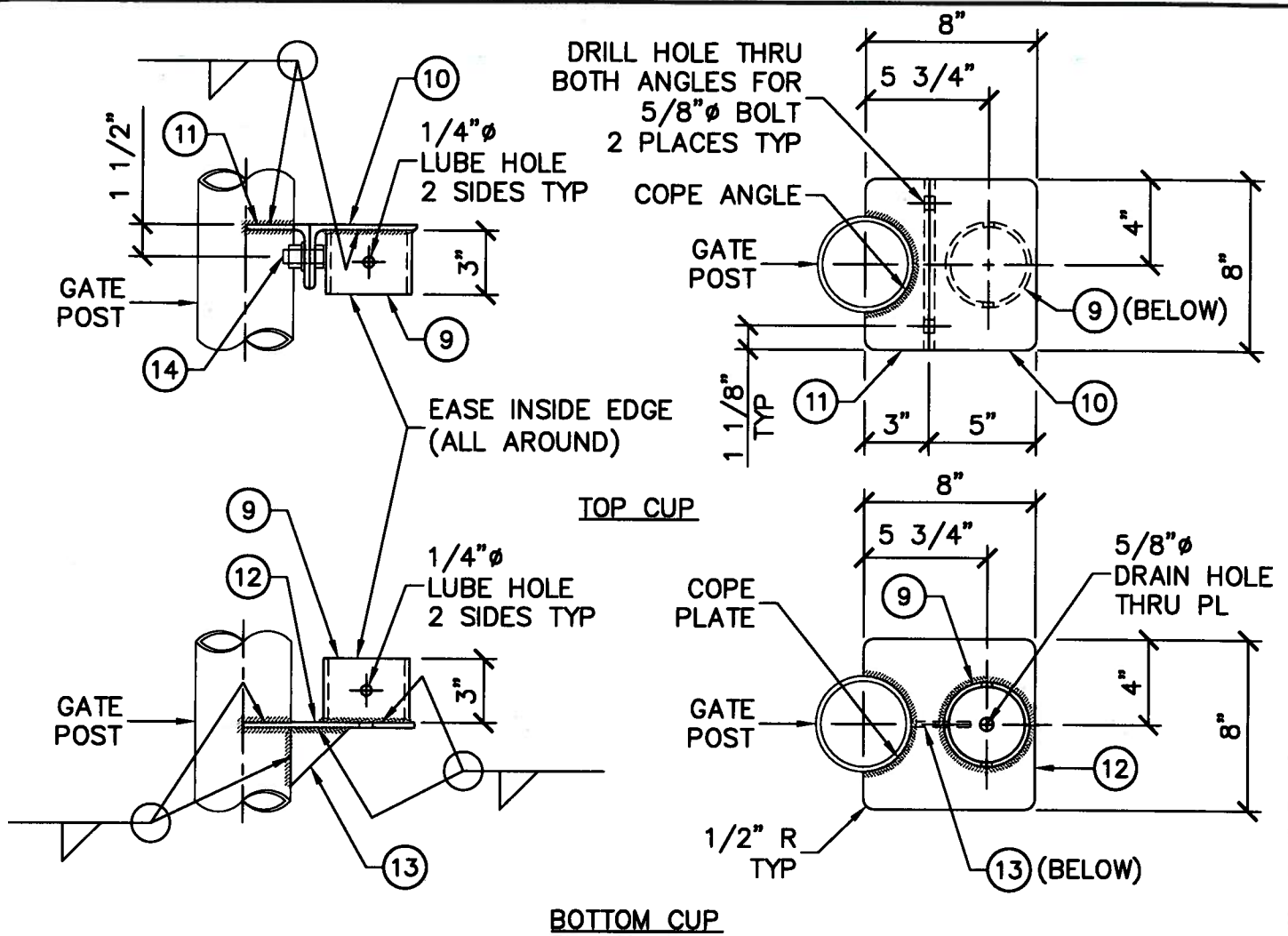


GATE POST PARTS					
PART	DESCRIPTION	NOMINAL SIZE	WEIGHT	OUTSIDE DIAMETER	INSIDE DIAMETER
⑦	PIPE	4"	STANDARD	4.50"	4.03"
⑧	PIPE CAP	4"	STANDARD	4.50"	4.03"

FOR CONTINUATION OF GATE POST MATERIALS, SEE TOP AND BOTTOM CUPS ON SHEET 4.

GATE POST

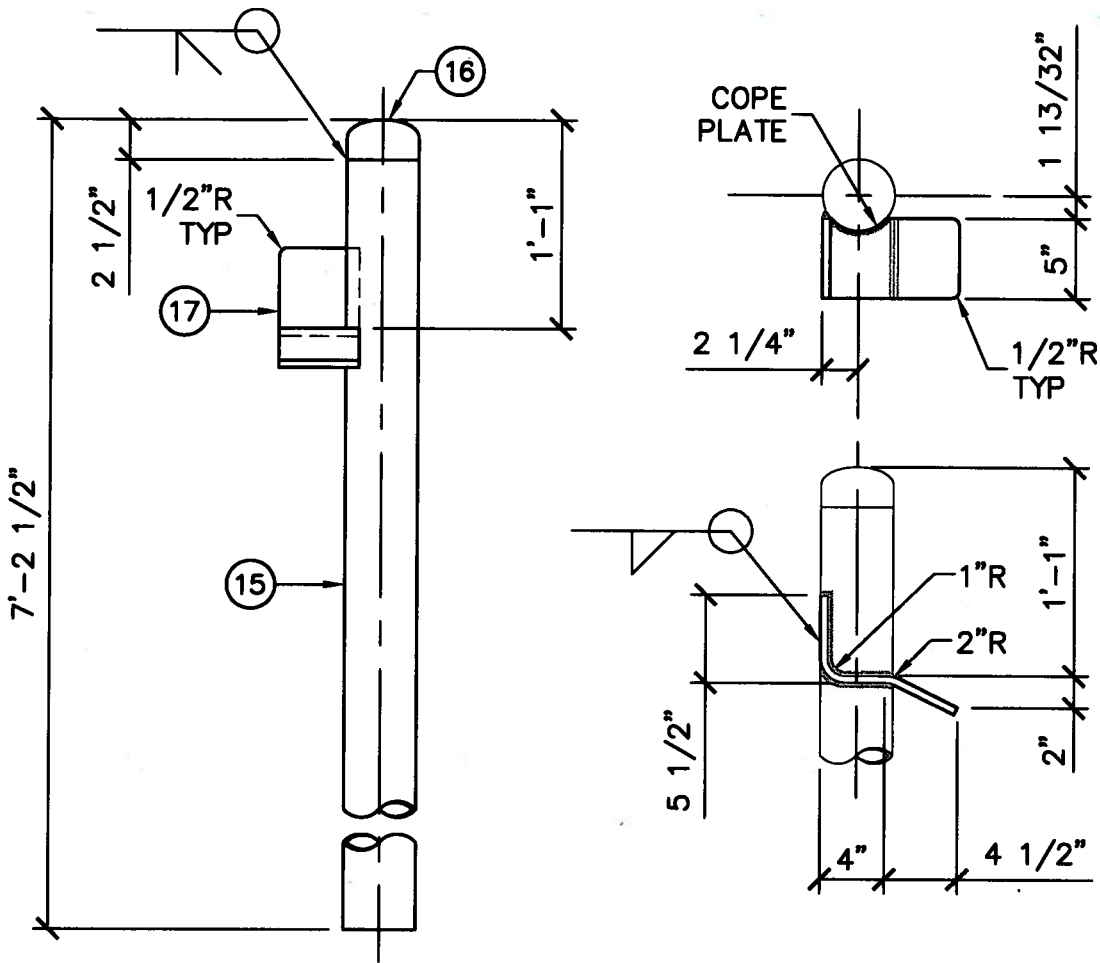
	PIPE GATE - FABRICATION					STD PLAN
	DRAWN	CR	KEY	REVISIONS	DATE	APPROVED
	CHECKED	<i>NS</i>		ORIGINAL ISSUE	02-04-16	<i>Rob Lim</i>
	OPERATIONS	DC				ROB LIM, PE, CHIEF OF DESIGN & CONSTRUCTION DATE <i>2/12/16</i>
EAST BAY REGIONAL PARK DISTRICT – STANDARD PLANS						380 SHEET 3 OF 6 NOT TO SCALE



TOP AND BOTTOM CUP PARTS					
PART	DESCRIPTION	NOMINAL SIZE	WEIGHT	OUTSIDE DIAMETER	INSIDE DIAMETER
⑨	PIPE	3 1/2"	STANDARD	4.00"	3.55"
⑩	L5 X 3 X 1/4 X 0'-8" LONG				
⑪	L3 X 3 X 1/4 X 0'-8" LONG				
⑫	SQUARE PL 1/4 X 8 X 8				
⑬	GUSSET PL 1/4 X 2 3/4 X 2 3/4				
⑭	HDG STRUCTURAL BOLT 5/8-11 X 1 1/2 LONG WITH HEAVY HEX NUT AND WASHER, TOTAL 2				

TOP AND BOTTOM CUPS

	PIPE GATE - FABRICATION					STD PLAN
	DRAWN	CR	KEY	REVISIONS	DATE	APPROVED
	CHECKED	<i>fb</i>		ORIGINAL ISSUE	02-04-16	<i>Rollin</i>
	OPERATIONS	DC				ROB LIM, PE, CHIEF OF DESIGN & CONSTRUCTION DATE <i>2/12/16</i>
EAST BAY REGIONAL PARK DISTRICT - STANDARD PLANS						380 SHEET 4 OF 6 NOT TO SCALE



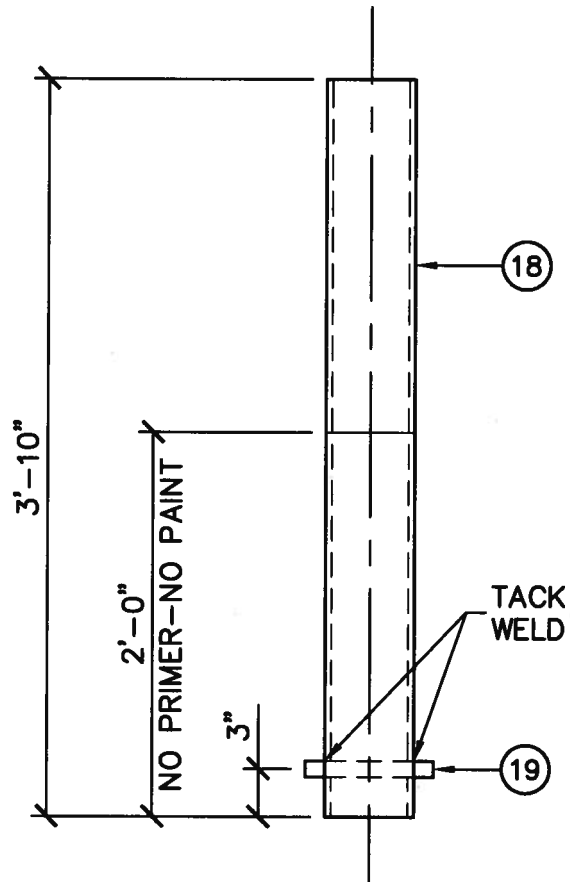
NOTE:

1. LEFT LATCH POST SHOWN, RIGHT LATCH POST SIMILAR OPPOSITE HAND, CENTER LATCH POST SIMILAR WITH TWO BENT PLATES (ONE PER SIDE).

LATCH POST PARTS					
PART	DESCRIPTION	NOMINAL SIZE	WEIGHT	OUTSIDE DIAMETER	INSIDE DIAMETER
(15)	PIPE	4"	STANDARD	4.50"	4.03"
(16)	PIPE CAP	4"	STANDARD	4.50	4.03
(17)	BENT PL 1/2				

LATCH POST

	PIPE GATE - FABRICATION					STD PLAN
	DRAWN	CR	KEY	REVISIONS	DATE	APPROVED
	CHECKED	MS	△	ORIGINAL ISSUE	02-04-16	 ROB LIM, PE, CHIEF OF DESIGN & CONSTRUCTION DATE 2/12/16
	OPERATIONS	DC				
EAST BAY REGIONAL PARK DISTRICT – STANDARD PLANS						380 SHEET 5 OF 6 NOT TO SCALE



SLEEVE PARTS					
PART	DESCRIPTION	NOMINAL SIZE	WEIGHT	OUTSIDE DIAMETER	INSIDE DIAMETER
18	PIPE	5"	EXTRA STRONG	5.56"	4.81"
19	1" DIA X 0'-8" LONG STEEL BAR				

SLEEVE



PIPE GATE - FABRICATION

DRAWN	CR	KEY	REVISIONS	DATE	APPROVED
CHECKED	NS	△	ORIGINAL ISSUE	02-04-16	<i>Rob Lim</i>
OPERATIONS	DC				ROB LIM, PE, CHIEF OF DESIGN & CONSTRUCTION
					DATE 2/12/16

STD PLAN

380

SHEET 6 OF 6
NOT TO SCALE