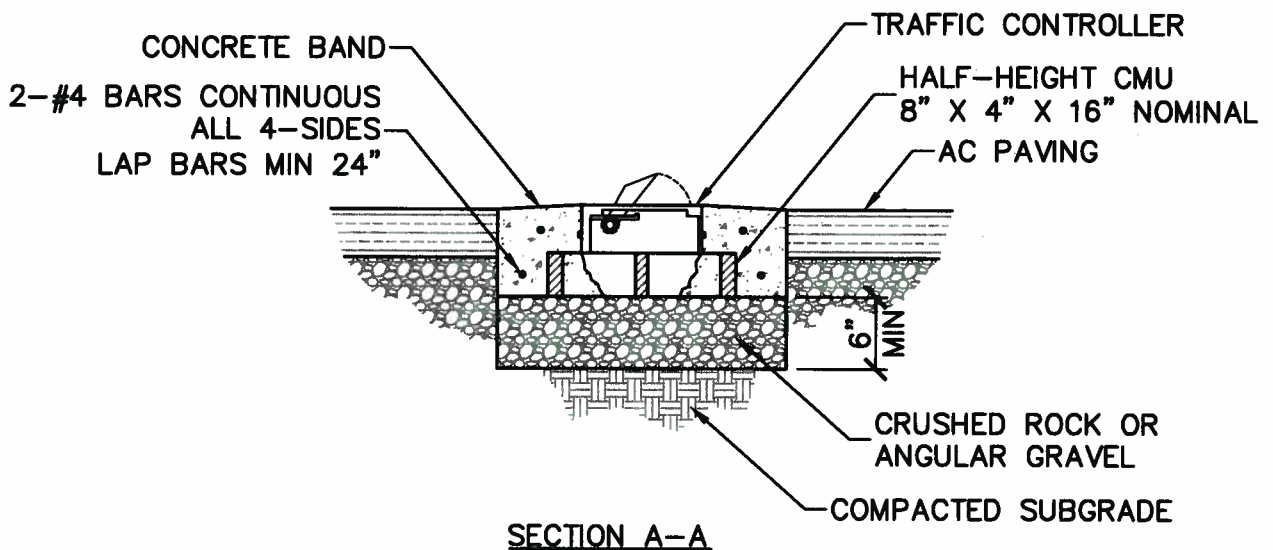


PLAN



SECTION A-A

NOTES

1. TRAFFIC CONTROLLER SHALL BE SABRE TOOTH TRAFFIC CONTROLLER TC-14 WITH TC-14-LD LATCH DOWN BY DELTA SCIENTIFIC CORPORATION (DELTA SCIENTIFIC.COM) OR DIRECTIONAL TRAFFIC CONTROLLER DC-72 WITH DC-72-LD LATCH DOWN BY AMERISTAR BOOTH & BUILDING STRUCTURES (AMERISTARBOOTH.COM).
2. DIMENSIONS OF TRAFFIC CONTROLLERS VARY BETWEEN MANUFACTURERS. CONTROLLER TO BE FIELD FIT DURING CONSTRUCTION.
3. CENTER TRAFFIC CONTROLLER IN OUTBOUND LANE, UNLESS OTHERWISE NOTED.
4. SLOPE TOP OF CONCRETE 1/2" AWAY FROM CONTROLLER AND APPLY MEDIUM BROOM FINISH IN THE DIRECTION OF TRAVEL.
5. ROAD LANES 13 FEET WIDE AND WIDER WILL REQUIRE MORE THAN ONE 6-FOOT TRAFFIC CONTROLLER.



TRAFFIC CONTROLLER

DRAWN	JY	KEY	REVISIONS	DATE
CHECKED	AS	△	ORIGINAL ISSUE	12-4-15
OPERATIONS	DC			

APPROVED
Rollin
 ROB LIM, PE, CHIEF OF DESIGN & CONSTRUCTION
 DATE 12/8/15

STD PLAN

303

SHEET 1 OF 1
 NOT TO SCALE