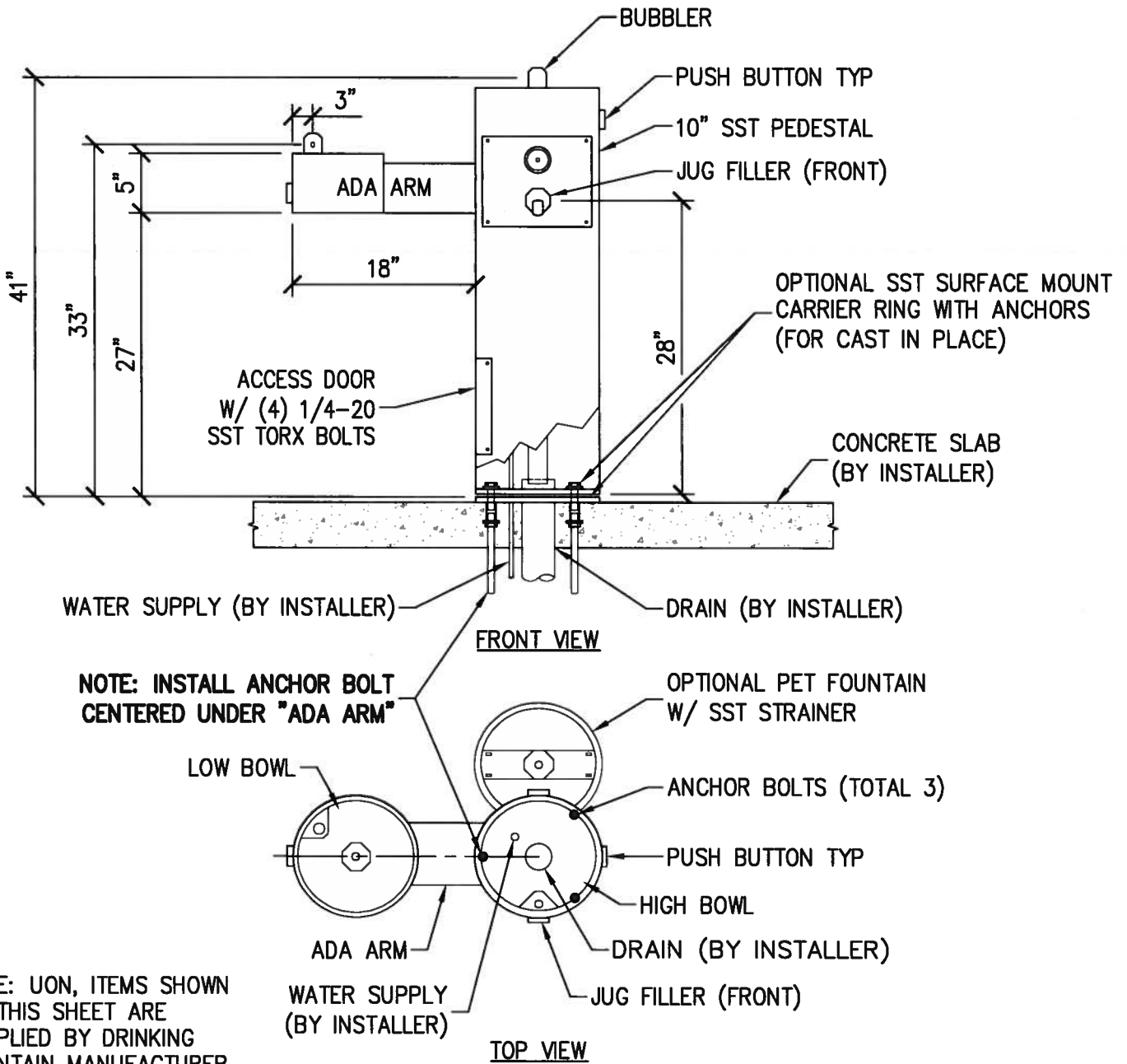


NOTES:

1. DRINKING FOUNTAIN SHALL BE ADA HI/LOW, PEDESTAL MOUNT, STAINLESS STEEL, POWDER COATED BROWN, WITH RIGHT OR LEFT LOWER ADA BOWL (SITE DEPENDANT), STAINLESS STEEL SAND STRAINERS ALL BOWLS, JUG FILLER, AND OPTIONAL PET FOUNTAIN (SITE DEPENDANT) AS AVAILABLE FROM MOST DEPENDABLE FOUNTAINS (MDF), www.mostdependable.com, MODEL 440SM, OR EQUAL.
2. DRINKING FOUNTAIN WITH LEFT ADA ARM IS SHOWN, RIGHT ADA ARM IS SIMILAR OPPOSITE HAND.



ADA DRINKING FOUNTAIN

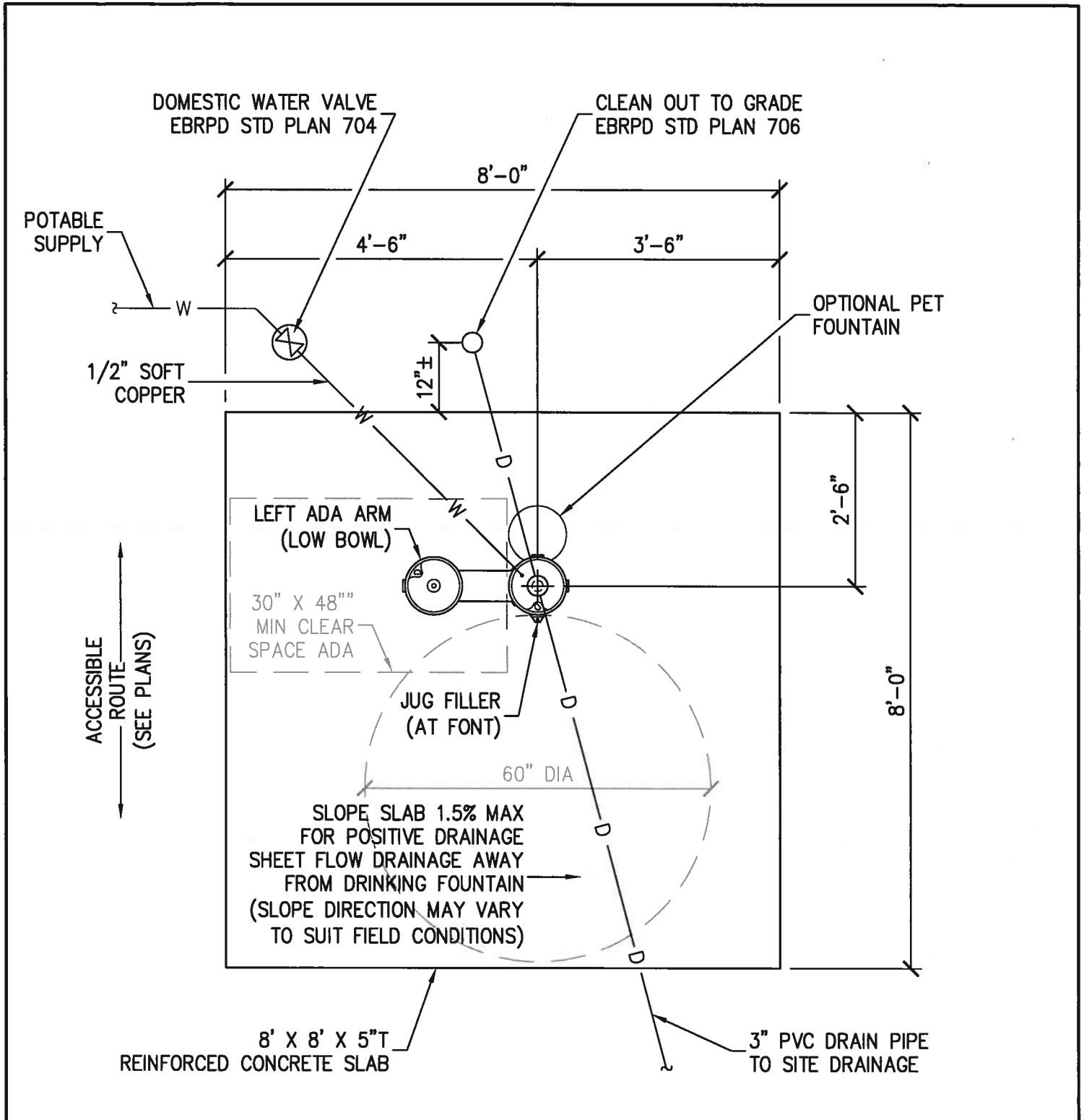
DRAWN	CR	KEY	REVISIONS	DATE
CHECKED	GG	△	ORIGINAL ISSUE	06-30-17
OPERATIONS				

APPROVED
Glenn Gilchrist
 GLENN GILCHRIST, PE, DESIGN MANAGER, ASD DIV.
 DATE 7/3/2017

STD PLAN

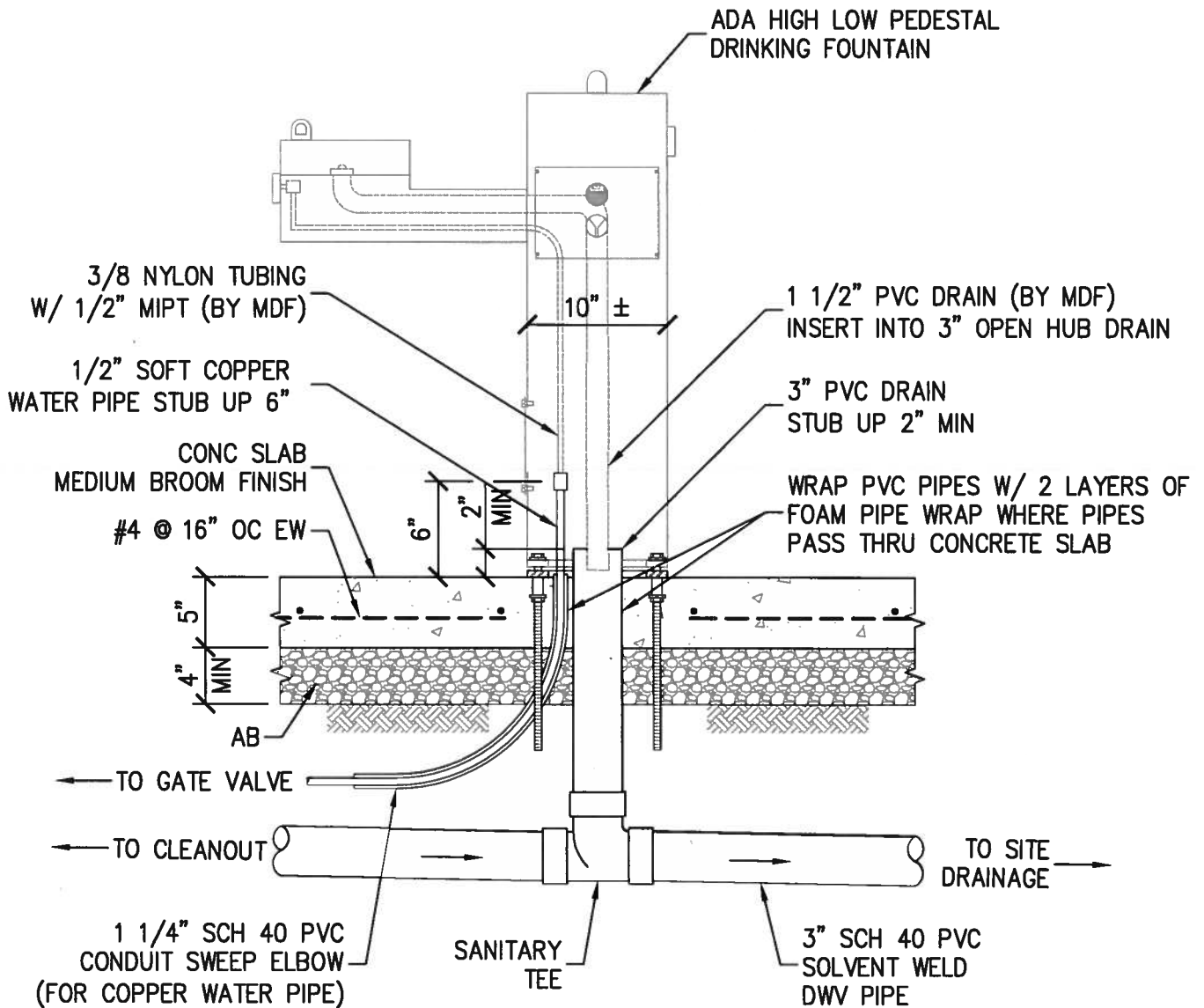
515

SHEET 1 OF 3
 NOT TO SCALE



PLAN

	ADA DRINKING FOUNTAIN					STD PLAN
	DRAWN	CR	KEY	REVISIONS	DATE	APPROVED
	CHECKED	GG		ORIGINAL ISSUE	06-30-17	<i>Glenn D. Gilchrist</i>
	OPERATIONS					GLENN GILCHRIST, PE, DESIGN MANAGER, ASD DIV. DATE 7/3/2017
EAST BAY REGIONAL PARK DISTRICT – STANDARD PLANS						515 SHEET 2 OF 3 NOT TO SCALE



SECTION



ADA DRINKING FOUNTAIN

DRAWN	CR
CHECKED	GG
OPERATIONS	

KEY
△

REVISIONS	DATE
ORIGINAL ISSUE	06-30-17

APPROVED	<i>Glenn Gilchrist</i>
GLENN GILCHRIST, PE, DESIGN MANAGER, ASD DIV.	
DATE	7/3/2017

STD PLAN
515
SHEET 3 OF 3
NOT TO SCALE