

TILDEN PARK TI007a FUELS MANAGEMENT PRESCRIPTION

SITE DESCRIPTION AND LOCATION

Size: 2.5 acres

Site Location: Upper Big Springs Trail bisects this RTA. The Seaview Trail is northern boundary and the Arroyo Trail is the southern boundary.

Description: Mature eucalyptus with bay understory on steep south facing slopes. Drainage runs along the western border of this RTA.

Fuel Type based on NWCG Photo Series for Quantifying Natural Fuels:

2.5 acres - Mature Eucalyptus Forest: *Volume XIII: Northern California > East Bay Eucalyptus Forest > EBE 06*

VEGETATION MANAGEMENT GOAL:

Annual grassland, north coastal scrub, developing oak-bay woodland

FUELS MANAGEMENT OBJECTIVES:

- 1 - Decrease the probability of fire becoming established along the ridgetop (Seaview Trail).
- 2 - Prevent ember production and distribution.

FUELS TREATMENT PRESCRIPTION

- Remove all eucalyptus, pine, and any other designated trees.
- Reduce surface fuel load.
- Break up continuity in ladder fuels.
- Maintain site with herbicides.

INITIAL FUELS TREATMENT

- Thin eucalyptus and pine, generally up to 12" dbh and other marked trees. Thinning intensity may be modified on steep slopes and/or in drainage areas.
- Treat woody material (dead/downed) >3" dia. such as downed logs and limbs.
- Material can either be removed offsite or chipped back onsite within the project boundary to a depth not to exceed 4".
- Herbicide treatments will be consistent with the District Pesticide Control Recommendation.

FUEL TYPE AND INITIAL FUELS TREATMENT LEVELS

	Woody Material (dead/downed) >3" dia. (tons/ac.)	Understory Vegetation/Shrub Biomass (tons/ac.)	Saplings and Trees <4" dbh (stems/ac.)	Trees 4-9" dbh (stems/ac.)	Trees 9-20" dbh (stems/ac.)	Trees >20" dbh (stems/ac.)
Mature Eucalyptus Forest - EBE 06	5.8		691	108	72	20
post treatment level	0		0	0	50	20

*based on NWCG Photo Series for Quantifying Natural Fuels

Follow-up/Maintenance:

YEAR	FUELS TREATMENT
01	Initial treatment
02-04	Commence annual monitoring and treat eucalyptus resprouts if needed.
05	Evaluate site for future treatment.
06-10	Remove remaining eucalyptus to achieve Vegetation Management Goal.
07-30	Monitor and treat if necessary.

RESOURCE OBJECTIVES AND CONSIDERATIONS:

- Conduct all initial work during the period from September 1st to Jan. 31st to avoid disturbance to nesting raptors and song birds, as recommended by the District's biologist. If work will occur during nesting season (Feb 1-Aug 31), Stewardship will conduct a pre-work nesting survey within 15 days of work beginning and flag any buffer zones around identified nests.
- Conduct surveys and treatment activities in oak and bay habitat to identify and avoid dusky-footed woodrat nests. Any nest will have a buffer zone as described by the current protocol developed by Stewardship.
- Install erosion control measures if needed in areas where duff has been removed.
- Within suitable Alameda striped racer (whipsnake) habitat, work may occur between Nov. 1st and March 31st. If work occurs outside this window, a biological monitor must be present for all activities on site. Use of heavy equipment is limited to April 1- Oct. 31.
- Protection and avoidance measures will be taken when working in specified drainage areas as directed by the Stewardship Department. Where the drainage occurs, no materials will be added to the litter within a 15' buffer. No heavy equipment will drive over or be used in the buffer area around the drainage channels.

MONITORING:

Staff from the District's Fire Department, Planning/Stewardship, and Operations will evaluate the success and efficacy of the initial and follow-up fuels treatments. Monitoring results will be documented.

PRESCRIPTION PREPARED BY:

K. Beal
Fire & Fuels Dept. EBRPD

[Signature]
Signature

10/8/14
Date

REVIEW AND APPROVAL:

This prescription meets the District's standards for fuels management, natural resource protection and achievement of Best Management Practices according to the Wildfire Hazard Reduction and Resource Management Plan and is consistent with the mitigation measures contained in the EIR:

Dan McLinnick
Fire Chief, EBRPD

[Signature]
Signature

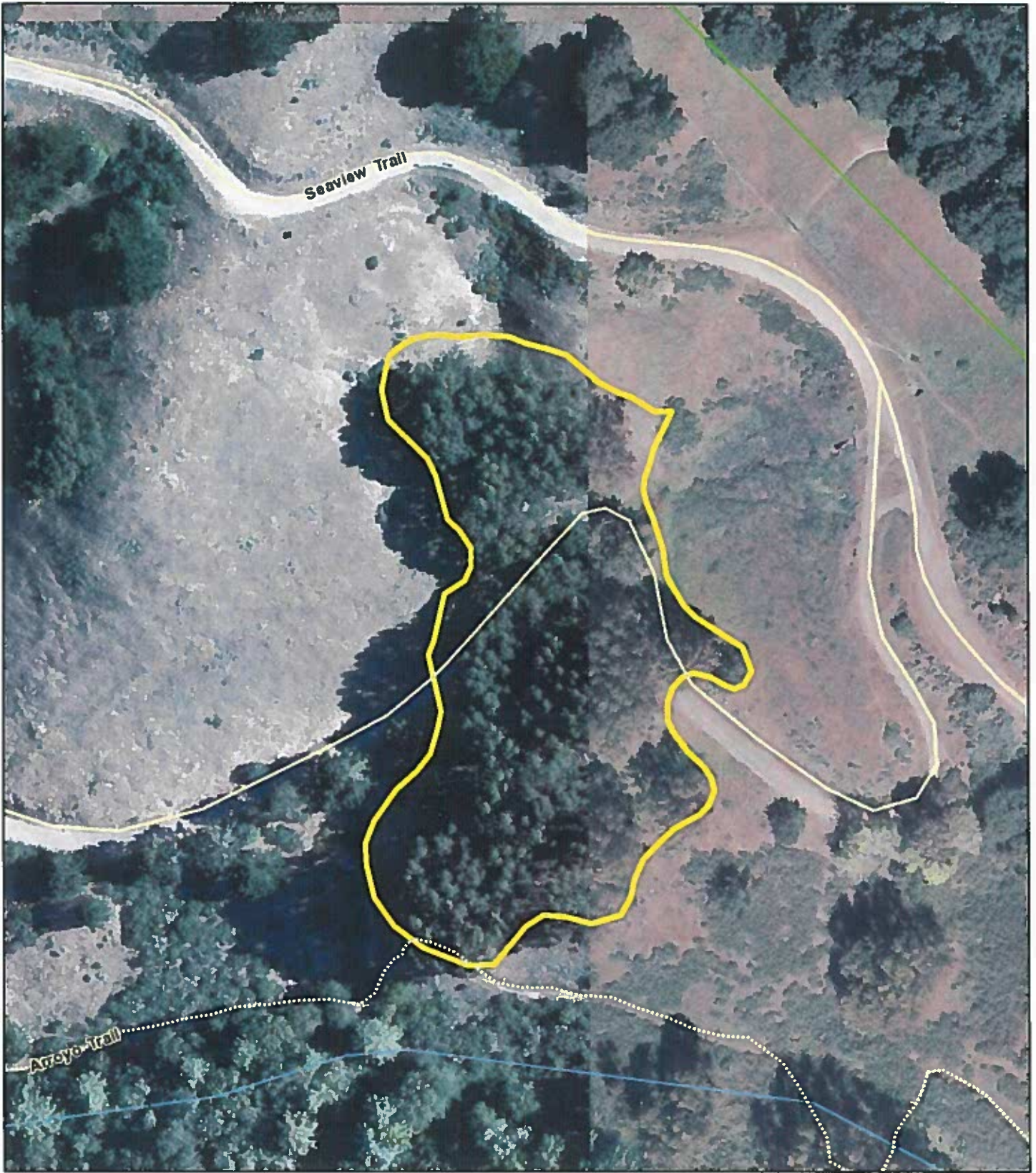
10/9/14
Date

MATTHEW GRAUL
Chief of Stewardship, EBRPD

[Signature]
Signature

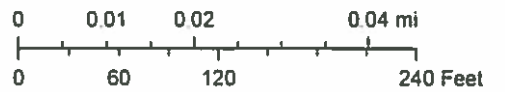
10/7/14
Date

TI007a



Printed: May 23, 2014

1:1,383



East Bay Regional Park District.
Site managed by GIS Services.

