

Legend

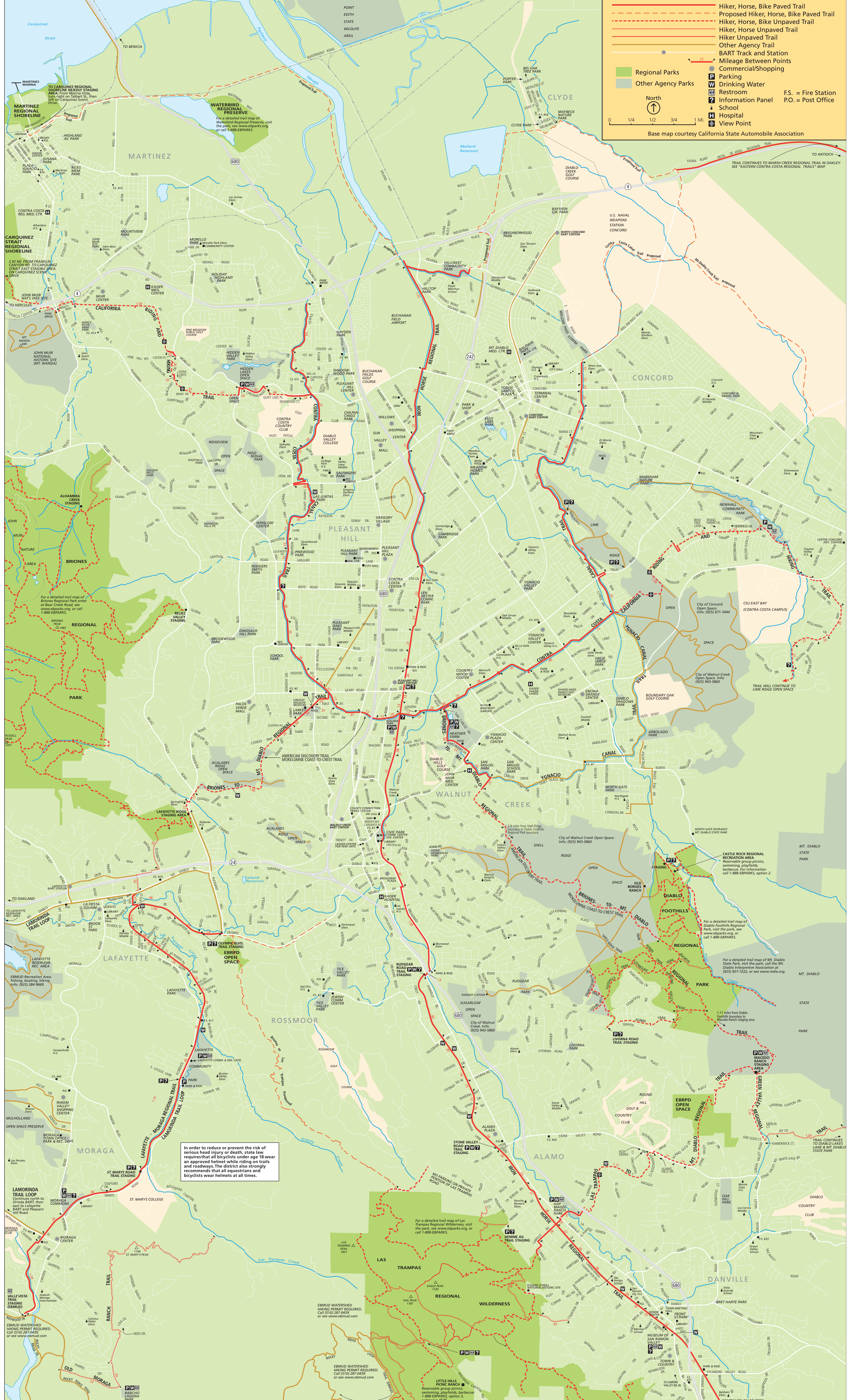
- Hiker, Horse, Bike Paved Trail
- Proposed Hiker, Horse, Bike Paved Trail
- Hiker, Horse, Bike Unpaved Trail
- Proposed Hiker, Horse, Bike Unpaved Trail
- Hiker Unpaved Trail
- Hiker, Horse Unpaved Trail
- Other Agency Trail
- BART Track and Station
- Mileage Between Points
- Commercial/Shopping
- Parking
- Drinking Water
- Restroom
- Information Panel
- School
- Hospital
- View Point
- F.S. = Fire Station
- P.O. = Post Office

Regional Parks
Other Agency Parks

North

0 1/4 1/2 3/4 1 Mi.

Base map courtesy California State Automobile Association



In order to reduce or prevent the risk of serious head injury or death, state law requires that all bicyclists under age 18 wear an approved helmet while riding on trails and roadways. The district also strongly recommends that all equestrians and bicyclists wear helmets at all times.

For a detailed trail map of Las Trampas Regional Wilderness, visit the park, see www.ebeparks.org, or call 1-888-EBPARKS.

EBMUD WATERSHED HIKING PERMIT REQUIRED. Call (510) 287-0459 or see www.ebmud.com

EBMUD WATERSHED HIKING PERMIT REQUIRED. Call (510) 287-0459 or see www.ebmud.com

CONTINUED ON REVERSE