



Point Pinole, a state landmark, has a colorful 80-year history of explosive manufacturing. Future interpretive programs and a new interpretive center will bring this era to life for the thousands of park visitors and schoolchildren who come to Point Pinole.



Tree removal of a small area of non-native trees will set the stage for a new bridge, park access, and other planned amenities. Native grass restoration will enhance the area.

A Second Entrance at Point Pinole

COMING SOON

In **October 2010**, the East Bay Regional Park District began Phase I of a multi-phase project to build a second entrance area and other amenities at Point Pinole. The new entrance will be near the center of the park's eastern boundary at Atlas Road, providing better access and more recreation opportunities to our visitors. The main portion of the Phase I project includes constructing a bridge over the railroad tracks, setting the stage for additional phases of park improvements such as a parking lot, picnic areas, and a future interpretive center. The bridge will serve as both a vehicle and ADA compliant pedestrian bridge, which also connects to the San Francisco Bay Trail. The proposed project addresses the interests of local residents and, when all phases are complete, provides the access, programs, trails, and improvements envisioned by our larger community while protecting the natural values and features of the park.

Dates:

- **October – December 2011:** tree removal of eucalyptus, a non-native tree species.
- **Summer 2012 – Fall 2012:** placement of fill dirt for construction of bridge and parking areas.
- **Early 2016 – Early 2017:** bridge construction, gravel parking area, and utilities added at the Atlas Bridge Road area of the park.
- **After 2017 (future phases):** Picnic areas, playground, interpretive center as funds become available.

Funding: Funds for Phase I are from the Park District's Measure CC and WW bonds, the Contra Costa Transportation Authority (CCTA) and funds derived from the City of Richmond for bridge construction.

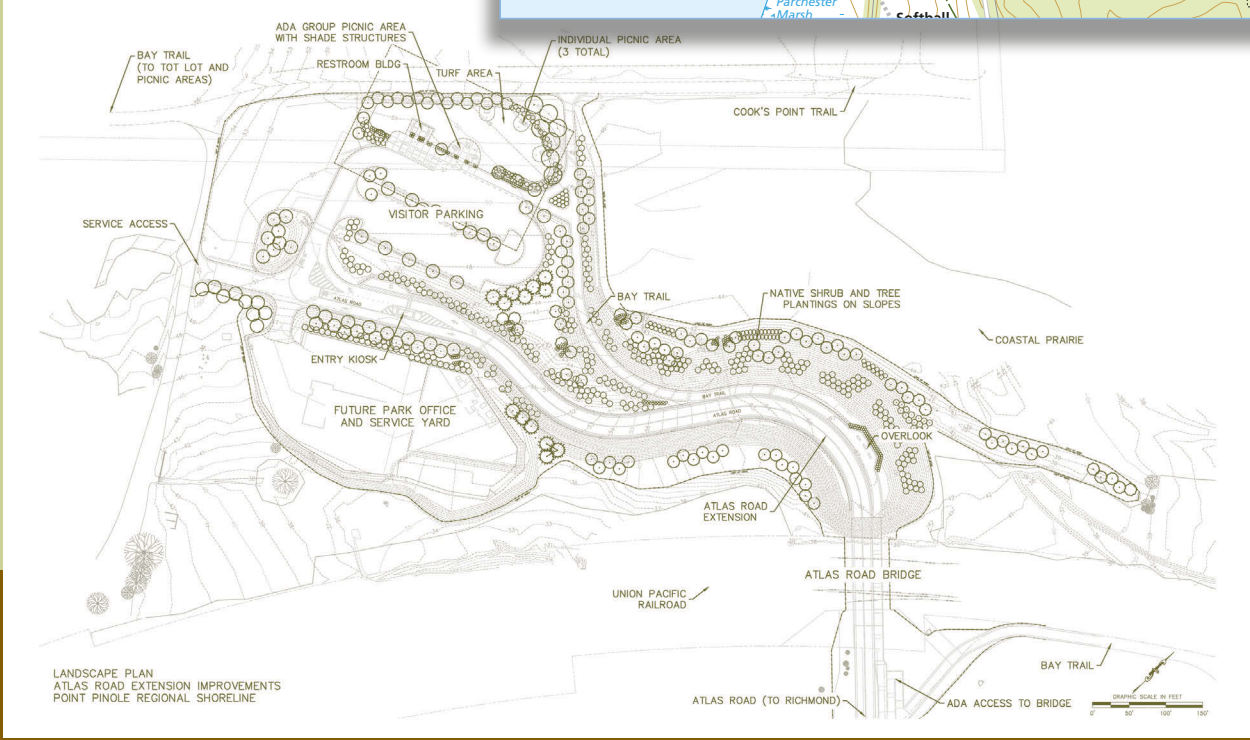
If you have questions about this project, please refer to the District's website www.ebparks.org/pointpinole, or contact **Chief of Design and Construction Rob Lim** regarding the project at 510-544-2304 or **Park Supervisor Britt Thorsnes** regarding the trail routes at 510-237-6896.



Point Pinole is popular for hiking, bird watching, biking, picnicking and fishing. The new centrally-located entrance will encourage visitors to enjoy more of the park.

Project Overview:

Tree removal on a 6.5-acre section of this 2,300-acre park occurred in 2010. Tree removal was during non-nesting season on an area of park purchased in 1996 specifically for this new access. The park and trails remained open during this time. This 6.5-acre section of park will be closed to visitors during construction of the bridge and parking area. All other park areas will remain open. Visitors may observe large trucks and equipment along Cooks Point and Pinole Point trails. When completed, this second entrance to the park will offer recreation opportunities while protecting the natural values and features of Point Pinole.



Future Park Development Area