

2950 PERALTA OAKS COURT P.O. BOX 5381 OAKLAND CALIFORNIA 94605-0381
T. 1 888 EBPARKS F. 510 569 4319 TDD. 510 633 0460 WWW.EBPARKS.ORG



DATE: September 17, 2009

TO: Board of Directors
FROM: Pat O'Brien, General Manager
SUBJECT: Background Information for the September 25, 2009
Board Executive Committee Meeting

I. 2010 Board Budget Objectives

General Manager Pat O'Brien will make a presentation on this agenda item.

BACKGROUND

The District is in the process of preparing its 2010 Budget for the coming year; part of this process includes the annual review of the Board Budget Objectives by the Board Executive Committee.

Attached for the Committee's review and comment are the draft 2010 Board Objectives (Attachment A), derived from last year's version with slight modifications and include comments received from the Board. After Committee review and concurrence, these Board Budget Objectives will be submitted for inclusion in the draft 2010 District Budget, which the entire Board will be reviewing prior to final adoption.

RECOMMENDATION

Staff recommends that the Board Executive Committee approve the draft 2010 Board Objectives and forward a favorable recommendation to the full Board for consideration.

II. Proposal to Name Ridge Memorial Site at Morgan Territory Regional Preserve for Roger Epperson

Everett James, Park Planner, will make a presentation on this agenda item.

BACKGROUND

The General Manager and Board Operations Committee recommended that the Planning Department initiate the recognition of former Park Supervisor Roger Epperson under the East Bay Regional Park District's Naming Policy. The currently unnamed ridge is aligned northeast to southeast immediately east of Morgan Territory's only backpack camp. The ridge location was selected by District staff after consultation with Mr. Epperson's family. The ridge top offers excellent panoramic views of the surrounding landscape and was a favorite place

of Mr. Epperson. The location map, photos of the ridge top, and Naming Policy are attached. (Attachments B, C, and D)

Mr. Epperson died in a drowning accident last December while vacationing with his family in Hawaii. He served the District for over 25 years, most recently as the Park Supervisor for Black Diamond Mines, Morgan Territory, and Round Valley Regional Preserves. Mr. Epperson was widely respected amongst his peers for his commitment to open space protection and restoration and is responsible for numerous acquisition projects, park events, and land use efforts that helped develop those regional preserves.

Staff members who knew Mr. Epperson describe him as someone who always went the extra step to achieve excellence. He was known to be strong-willed and at times, even stubborn in his insistence on doing things properly. His love for the landscape is evident in the work he has left behind for countless others to enjoy. Particularly notable is his work with creating beautifully sited backpack camps (it is reported that he created more backpack camps than any other District employee) and restoration work at the historic Rose Hill Cemetery at Black Diamond Mines. He also assisted numerous local non-profit and community groups, such as the Muir Heritage Land Trust, on trail and restoration projects. In 2002, he received the Save Mount Diablo Mountain Star award for his stewardship efforts. An article written by Seth Adams in the *Diablo Watch* (Winter/Spring) 2000 edition commended Mr. Epperson for those efforts and his “responsible and careful management of parks and their resources.”

Mr. Epperson was very demanding of himself and his staff. He was a “working” supervisor who would work alongside his staff so that any work or special projects they completed would be of the highest park standards and done in a way that would always complement the natural landscape, scenic beauty, and wildlife he worked so hard to preserve. In light of his love of this place and his many significant and lasting contributions to the District and the parks he supervised, staff recommends that naming the proposed ridge in honor of Roger Epperson is appropriate according to the District’s Naming Policy.

RECOMMENDATION

The Planning Department has reviewed this proposal and requests that the Board Executive Committee forward a recommendation of the proposed name to the PAC and Board of Directors for consideration under the District’s Naming Policy.

III. District East Counties Parks HCP/NCCP

Doug Bell, Wildlife Program Manager, and representatives from ICF Jones & Stokes, will make a presentation on this agenda item.

BACKGROUND

The District is the largest landowner of open space in the eastern San Francisco Bay Area. In some parts of its service area, the District is the sole provider of parklands that preserve natural habitats and create outdoor recreational opportunities for residents of the Bay Area. However, due to the abundance and wide distribution of threatened and endangered species on its lands, the District has been restricted in its ability to implement operations and maintenance activities, to maintain existing facilities, and to build new recreation facilities without lengthy permitting procedures.

HCP/NCCP Plan Development

In response to the need for incidental take permits, development of a District Habitat Conservation Plan/Natural Community Conservation Plan (HCP/NCCP) for nine parks and regional trails in the eastern portions of Alameda and Contra Costa counties was initiated in early 2009. This conservation plan, called the District East Counties Parks HCP/NCCP (District HCP/NCCP), will cover activities related to infrastructure operations and maintenance, wildlands management, public access, park development, and HCP/NCCP implementation. The Plan will coordinate with and build on the reserve system being created under the East Contra Costa County (ECCC) HCP/NCCP, which was permitted in 2007. Conservation under the District HCP/NCCP will protect, manage, and monitor in perpetuity 21,296 acres of land in Alameda and Contra Costa counties and provide for regional coordination among preserves, parks, and habitat land banks, (collectively referred to as *parklands*) resulting in significant conservation benefit for a wide range of listed and non-listed species.

Protection of species and habitat in Alameda County and Contra Costa County is critical because significant loss of valley floor and foothill grasslands, chaparral, and oak woodlands, along with the fragmentation of wildlife corridors, is taking place in an area known as a regional and global hotspot for biodiversity. Most impacts are the result of rapid urbanization and suburbanization throughout the San Francisco Bay Area, and climate change is expected to exacerbate these impacts. Though District lands are located near the growing population of the San Francisco Bay Area, they remain relatively undeveloped and undisturbed. Recreation on District lands is often centralized near established park facilities; therefore, parklands remain mostly undisturbed. The District owns and manages some of the largest areas of endangered-species habitat in the Bay Area. Most parks in the system encompass connected endangered-species habitat reserves with high conservation value, including wide elevation gradients necessary for species responses to climate change. The District lands provide abundant habitat for the federally listed species such as California red-legged frog (*Rana draytonii*), longhorn fairy shrimp (*Branchinecta longiantenna*), Alameda whipsnake (*Masticophis lateralis euryxanthus*) California tiger salamander (*Ambystoma californiense*), and San Joaquin kit fox (*Vulpes macrotis mutica*) among many other rare species that have been documented to be present within the plan area.

RECOMMENDATION

None. This agenda item is informational only.

ROLE

The seven-member Board of Directors, the legislative body of the District, determines District policy and adopts the District Budget. Board members, who are elected by ward to overlapping four-year terms, are responsible for promoting and protecting the public interest, as it is served by District parks and programs. The Board plays a major role in ensuring that the District develops and maintains positive and productive working relationships with federal, state, regional, county, city, and special district agencies, in addition to a multitude of special interest groups, citizens' organizations, community representatives, and private citizens. As described in the Board Operating Guidelines, the Board of Directors conducts annual performance appraisals of the General Manager, Clerk of the Board, and Chief Financial Officer.

ONGOING OBJECTIVES

1. Support the long-term preservation of open space resources through acquisition of additional land by the District and advocacy of other public and private organizations.
2. Identify citizens' needs, analyze changing constituencies, and provide policy direction for delivering District services to meet those needs, with a special emphasis on youth, seniors, minorities, low income populations and those who are challenged.
3. Participate in governmental and community forums to provide leadership and represent District goals and objectives. Communicate with the public, other agencies, and local interest groups to assist with the planning and construction of District projects.
4. Attend Park Advisory Committee and Regional Parks Foundation meetings to coordinate efforts and strengthen community ties.
5. Work cooperatively and effectively as a Board to represent District interests with constituents and elected representatives.
6. As articulated in the Master Plan, set policy to protect habitat, natural and cultural resources, enhance the natural and urban environment, and ensure that an equitable and diversified system of programs, trails, and regional parks is available to meet a variety of community needs.
7. Position the District so that it can respond strategically to long-term planning needs and possible changes in its revenue base. Set financial policy to guide and support the District's financial operations and the District's work force.
8. Develop an agenda for, and participate in, Board Workshops (finance, land acquisition, [and capital projects](#), ~~and~~ regional trails [and maintenance](#)).
9. Through committee review, assess planning, operating, and fiscal policies to insure that service delivery is consistent with these policies.
10. Continue to monitor casino development and project proposals as they affect the District.
11. Promote open communication with the public and within the District in collaboration with the General Manager.
12. Continue to oversee the development and any changes in the staff who are directly appointed by the Board.

2010 ~~2009~~ OBJECTIVES

1. Continue to seek alternative sources of funding for environmental maintenance and park operations given current Budget reductions.

~~2. Plan next steps to follow the election of Measure WW.~~

~~3.2.~~ Continue to assess all methods of funding opportunities for future land acquisitions. Oversee the General Manager's efforts to implement the Measure WW program through committee and Board oversight, taking actions required to implement the Local Grant and the Regional Park Project programs.

~~4.3.~~ Guide the review, update, and continued implementation of the General Manager's budget objectives in support of the District's Master Plan and Board Workshops.

~~5.4.~~ Guide the District's participation in the military base transition process at Point Molate, Point Alameda, the Oakland Army Base, and the Concord Naval Weapons Station.

~~6.5.~~ Support the development of District volunteer programs and activities.

~~6. Support the planning for the District's twenty-year anniversary of Measure AA, and the new Master Plan development process.~~

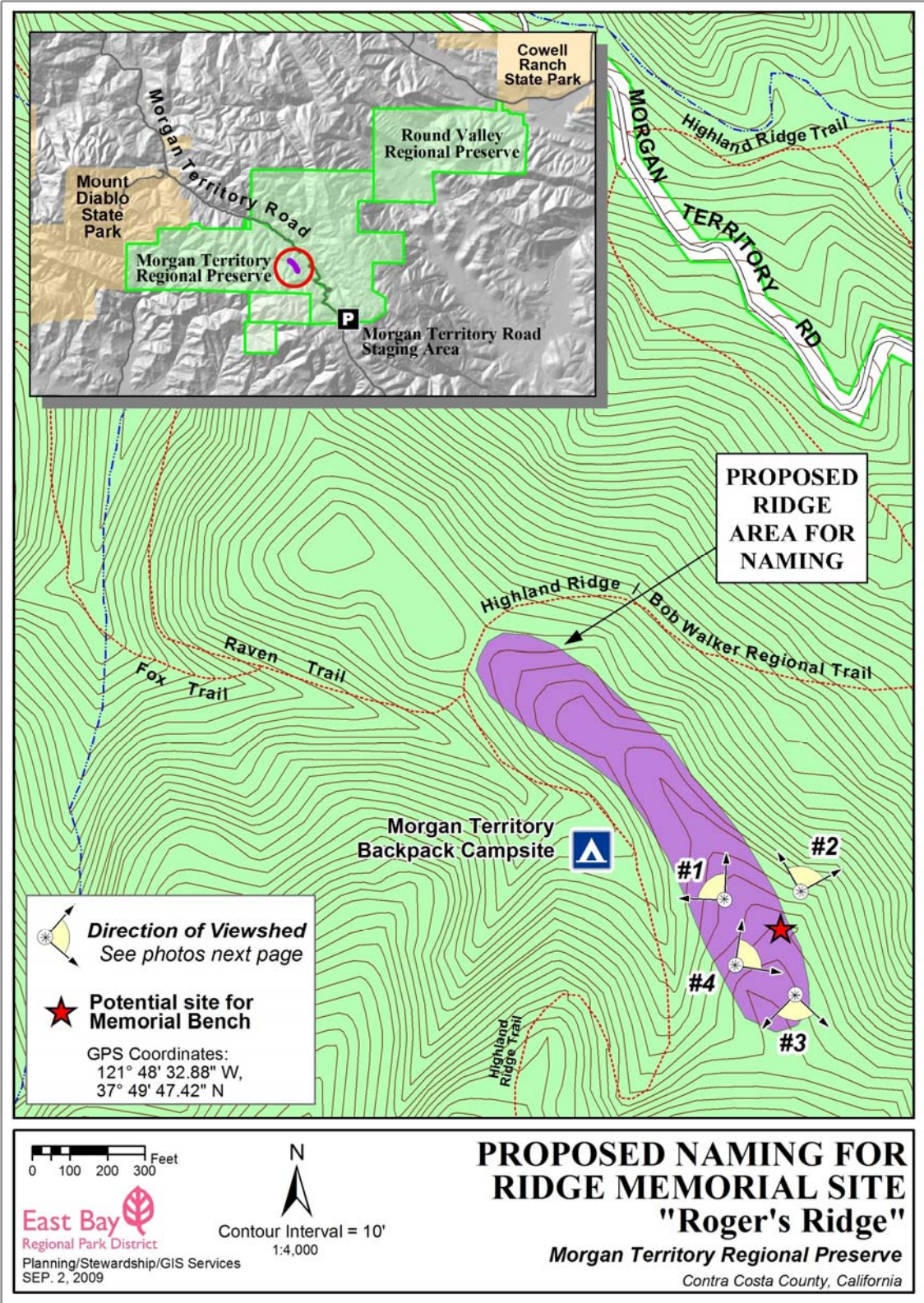
~~8.6.~~ Explore the feasibility of establishing upgraded camping facilities District-wide.

~~9.7.~~ Explore and support the establishment of short-distance connecting loop trails.

~~10.8.~~ ~~Support the establishment of a full-year intern program with universities.~~

~~11.9.~~ Support the planning and celebration for the District's 75th anniversary.

10. Review Wildfire Hazard Reduction and Resource Management Plan and EIR. (Sutter)





1 View from ridge northwest towards Mt. Diablo



2 View northeast from ridge



3 View south from proposed ridge



#4 View east from potential site for memorial bench

**East Bay Regional Park District
Naming Policy and Guidelines**

**Adopted by EBRPD Board of Directors on April 20, 2004
Resolution No. 2004-04-73**

The East Bay Regional Park District Board of Directors is responsible for the naming and renaming of Regional Parks¹, trails, features, areas, and facilities. Proposals for naming and/or renaming may come from any source including Board members, staff, volunteers, organizations and individuals.

The procedure for the naming of a Regional Parks, trails, features, areas and facilities began with the District's establishment in 1934. Naming is a way to remember shared history, to identify local natural resources and to honor individuals. Naming is also a useful way to help park users interpret parkland resources and to orient themselves while visiting the Regional Parks.

Recognition naming after persons living or deceased may be allowed in special cases. The District's preference is to express appreciation for contributions through awards, events, tributes, publicity, commemorative items, mementos and letters of appreciation. The number of features and facilities within EBRPD that may be named is finite. The decision not to accept a naming proposal does not diminish the significance of public service or the gratitude of the District to those who have contributed service or monetary donations.

Naming Policy

Regional Parks, trails, features, areas and facilities will be named after natural features such as plant and animal life, geographic, topographic or paleontological features, or for cultural features such as archaeological and historic artifacts, historic persons, families or events. Existing historically related names shall be respected.

Naming in recognition of persons living or deceased may be allowed only in special cases, and will be considered for substantial or outstanding contributions of service, property or funds to the public good of the East Bay Regional Park District, East Bay Region, Bay Area, State, or Nation. The East Bay Regional Park District is not a venue for corporate or personal advertising. Corporate names will not be considered for Regional Parks or significant geographic features, but in special cases, may be considered for facility or area names.

Staff will maintain guidelines which will include more specific criteria for eligibility and procedure. The EBRPD Board of Directors always maintains flexibility interpreting the policy, and shall have final authority to name parkland features and facilities as it deems appropriate.

¹ All parkland classifications including Regional Trails

Administrative Naming Guidelines

Staff will administer the Board's Naming Policy according to the following guidelines. These guidelines may be changed by the General Manager from time to time.

Naming Criteria

Naming of geographic or natural features, Regional Parks and Regional Trails after individuals will be an exception, reserved for those nominations meeting the highest threshold criteria. Recognition naming will more typically be applied to structures, facilities, in-park trails and areas.

Naming is a special recognition that is considered for persons deserving exceptional recognition for their unique, "substantial or outstanding" contributions, which will be evaluated as follows:

- Did the individual's contribution provide a major benefit to the District, or on a local, regional, state or national scale?
- Is the benefit sufficiently enduring so as to be apparent to future generations?
- Has the nominee already been substantially honored with recognition naming in other places, particularly in the East Bay, which would make a proposal redundant?

The District endeavors not to duplicate names within its system.

Naming Process

The name of a new Regional Park will be established in the District Master Plan, although the name may be temporary in nature. Parkland naming will be finalized in an appropriate planning document for the parkland unit or by separate Board Resolution.

The Planning/Stewardship Department will coordinate naming as a part of the preparation and review of planning documents or on a case-by-case basis as requested by the General Manager or Board of Directors. Naming requests will be evaluated as follows:

- Staff will submit naming recommendations for review by the Board Executive Committee.
- The Park Advisory Committee (PAC) will make naming recommendations to the Board of Directors.
- The Board Executive Committee will review staff and PAC recommendations and make a recommendation to the Board of Directors.
- The full Board will consider the naming proposal.

Minor naming or renaming for facilities and features will be established by a team led by the Planning/Stewardship Department when requested by the Operations or Public Safety Departments. Any names designated in this manner are temporary and will be reviewed as a part of the next formal planning process for the Regional Park.

Recognition Naming Process

Naming after persons who have contributed significantly in service, property or monetary donations to the East Bay Regional Park District, East Bay Region, Bay Area, State, or Nation, or naming after elected officials and persons associated directly with the East Bay Regional Park District will be considered on a case-by-case basis.

Recognition naming will be indicated on park brochure maps and may be further described within a parkland at a facility such as a Visitors Center, both to recognize the individual and to further public understanding of his/her contribution. The Planning/Stewardship Department will maintain a database of facilities designated with recognition names.

Recognition for significant monetary or land donations may arise because of an individual gift or as a part of a coordinated fund-raising effort for the facility or area. The individual gift will be reviewed for naming at the time that the gift is received by the Board. The Land Acquisition Department will administer land donations and the Public Affairs Department will administer monetary donations.

Specific fund-raising efforts for new park facilities or structures may contain a naming element in recognition of donors who may fund major costs. "Facilities," in these circumstances, do not include trails. In such instances, the Public Affairs Department will develop a Donor Naming Plan which will include both the specific naming opportunities and the manner of recognition. Review of recognition naming for Donor Naming Plans will follow the same review process as outlined in the "Naming Process" above, although the PAC will provide comments rather than recommendations. If there is a timing constraint with the gift or other impediment that precludes the PAC review, the PAC will be informed of the staff's recommendation.

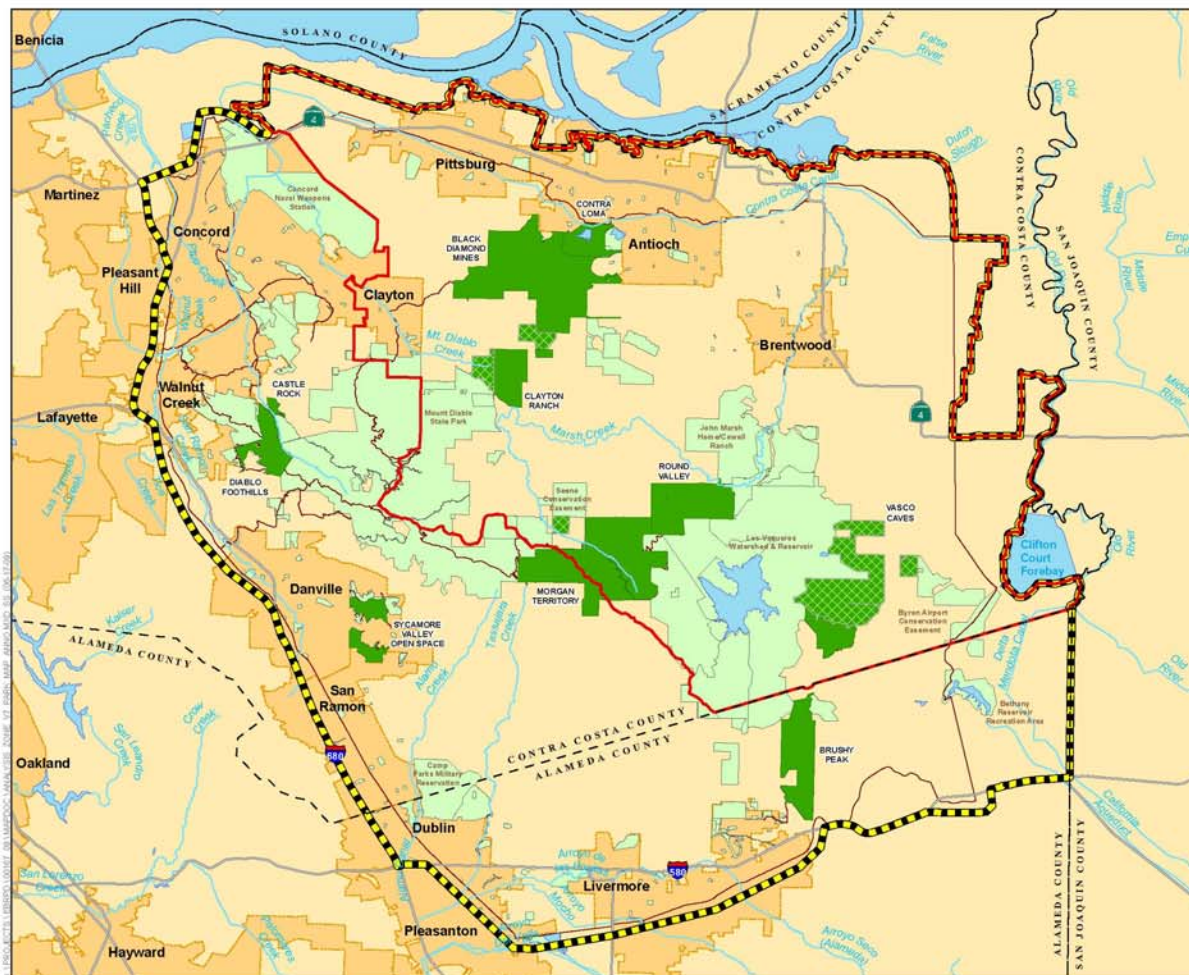
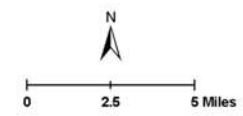


Figure 1-2.
District East Counties Parks
HCP/NCCP Conservation Analysis
Zone and Plan Area

- | | |
|----------------------------|--|
| Legend | Other Features |
| Analysis Zone | District Parks covered under ECCP HCP/NCCP |
| Plan Area | Open Space |
| Regional Trails | East Contra Costa County HCP/NCCP (ECCC HCP/NCCP) Inventory Area |
| District Covered Parklands | Water |
| | County Boundary |
| | City Boundary |
| | Major Road |
| | Rivers and Streams |



Sources: ESRI (2008) East Bay Regional Parks District (2007), East Alameda County Conservation Strategy (2008), East Contra Costa County HCP/NCCP (2006), ICF Jones & Stokes (2009)

