

EAST BAY REGIONAL PARK DISTRICT

2011 CAPITAL DEVELOPMENT and REGIONAL TRAILS SESSION



2011 CAPITAL DEVELOPMENT and REGIONAL TRAILS

East Bay Green Transportation Initiative Projects

San Francisco Bay Trail

- 1 Union City – Eden Landing to Coyote Hills
- 2 Oakland Shoreline
- 3 Magna Property – Gilman to Buchanan
- 4 Pinole Shores to Bayfront Park *
- 5 Hercules Transit Center to Rodeo *
- 6 Martinez Intermodal Station to Crockett *

East Bay Greenway

- 7 Coliseum BART to 105 th Avenue *

Iron Horse Regional Trail

- 8 Stanley Boulevard Streetscape Project
- 9 Livermore Segment I – Isabel to Murrieta
- 10 Dublin BART to Santa Rita Road *
- 11 Benicia Bridge to Concord
- 12 Alamo Canal Trail Undercrossing at I-580 *

Mokelumne Coast to Crest Trail

- 13 Mokelumne Overcrossing

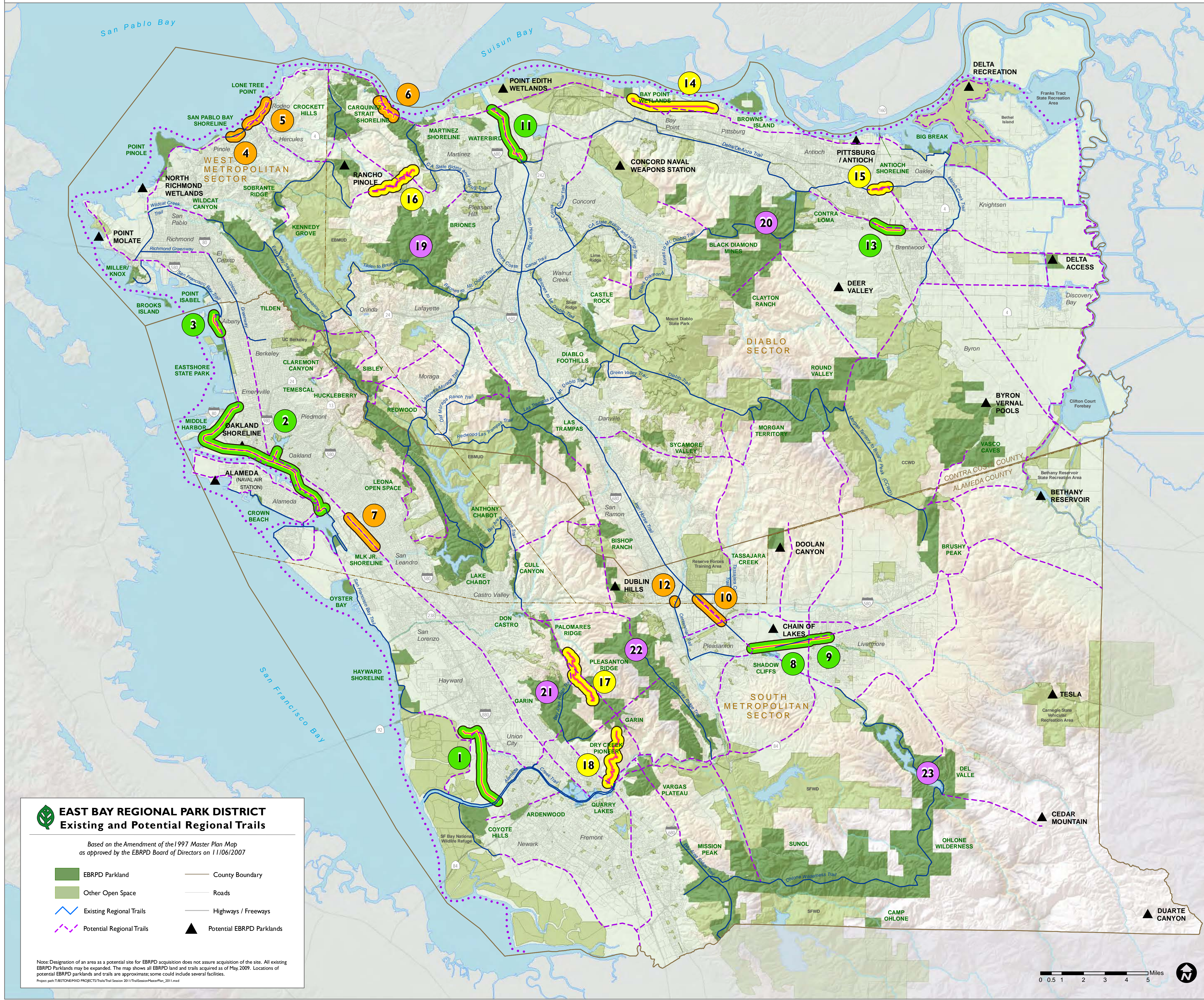
Other Regional Trail Projects

- 14 Great California Delta Trail – Bay Point to Pittsburg
- 15 Delta DeAnza Trail – Ridgeline Dr. to Neroly
- 16 Bay Area Ridge Trail – Feeder Trail #1
- 17 Bay Area Ridge Trail – Stonebrae Property
- 18 Bay Area Ridge Trail – Louie Property □ □ □

Narrow Trail Opportunities

- 19 Briones Regional Park
- 20 Black Diamond Mines Regional Park
- 21 Garin Regional Park
- 22 Pleasanton Ridge Regional Park
- 23 Del Valle Regional Park

X * Indicates TIGER II funded project



EAST BAY REGIONAL PARK DISTRICT Existing and Potential Regional Trails

- Based on the Amendment of the 1997 Master Plan Map as approved by the EBRPD Board of Directors on 11/06/2007
- EBRPD Parkland
 - Other Open Space
 - Existing Regional Trails
 - Potential Regional Trails
 - County Boundary
 - Roads
 - Highways / Freeways
 - Potential EBRPD Parklands

Note: Designation of an area as a potential site for EBRPD acquisition does not assure acquisition of the site. All existing EBRPD Parklands may be expanded. The map shows all EBRPD land and trails acquired as of May 2009. Locations of potential EBRPD parklands and trails are approximate; some could include several facilities.
 Project: 2011 EAST BAY REGIONAL PARK DISTRICT 2011 CAPITAL DEVELOPMENT and REGIONAL TRAILS SESSION 01 | 17 | 10/14/2011

