

GREAT CALIFORNIA DELTA TRAIL

Bay Point Regional Shoreline to Pittsburg Marina Park

The East Bay Regional Park District invites you to participate in a workshop about a new trail network to connect the Bay Point area with Pittsburg.

Attend the workshop for an opportunity to share your ideas...

Community Workshop

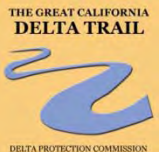
Thursday March 31, 2011
6-9pm

Ambrose Recreation and Park District

Board Room
3105 Willow Pass Road – Bay Point, CA



The Great California Delta Trail will be an interconnected regional network of land and water trails within the Delta region: Contra Costa, Sacramento, San Joaquin, Solano & Yolo counties.



This segment, between EBRPRD's Bay Point Wetlands and Pittsburg's Marina Park, will be one of the first links in this network, providing critical access to the Delta shoreline with a safe, continuous and accessible route for pedestrians and bicyclists.

Your involvement is encouraged. All information will be posted on the EBRPD Website following the workshop at: www.ebparks.org

Information:

1-888-EBPARKS
www.ebparks.org



City of **Pittsburg**
CALIFORNIA



Great California Delta Trail: Bay Point Regional Shoreline to Marina Park in Pittsburg

Bay Point Neighborhood Meeting

Ambrose Community Center

Thursday, March 31, 2011

6:00 PM to 8:00 PM

AGENDA

PURPOSE: To inform you about the project and solicit your input on this portion of the Great California Delta Trail Project.

1. **Introductions** (10 minutes)
 2. **Presentation** (40 minutes)
 - Study Area
 - Study Purpose
 - Project Setting
 - Engineering Feasibility
 - Preliminary Route Segments
 - Segment Rankings
 - Implementation Issues
 - Project Costs
 - Next Steps
 - Implementation Schedule
 3. **Question and Answer Session** (50 minutes)
 4. **Summary of Q & A and Wrap Up** (10 minutes)
-

Thank you for taking the time to participate in this discussion.
All input will be carefully considered as the project is developed.
Your comments will be forwarded to the Project Team and East Bay Regional Parks District.
You may provide written comments on the back of this page.

Great California Delta Trail: Bay Point Regional Shoreline to Marina Park in Pittsburg

FACT SHEET – March 2011



LOCATION

From East Bay Regional Park District's Bay Point Wetlands Regional Shoreline to Marina Park in Pittsburg, California.

COST

\$3 to \$4 million for 5-mile trail.

FUNDING SOURCES

To be determined.

COMPLETION DATE

Various trail segments projected for Summer 2013 to 2016.

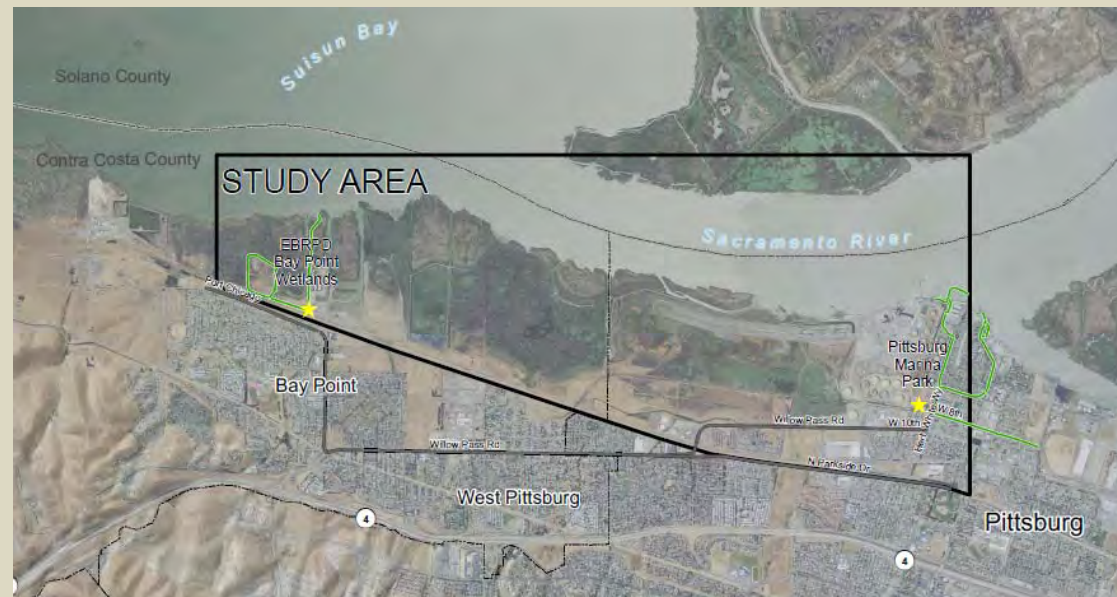
STATUS

Currently finalizing preliminary engineering plans and obtaining community input.

PROJECT DESCRIPTION

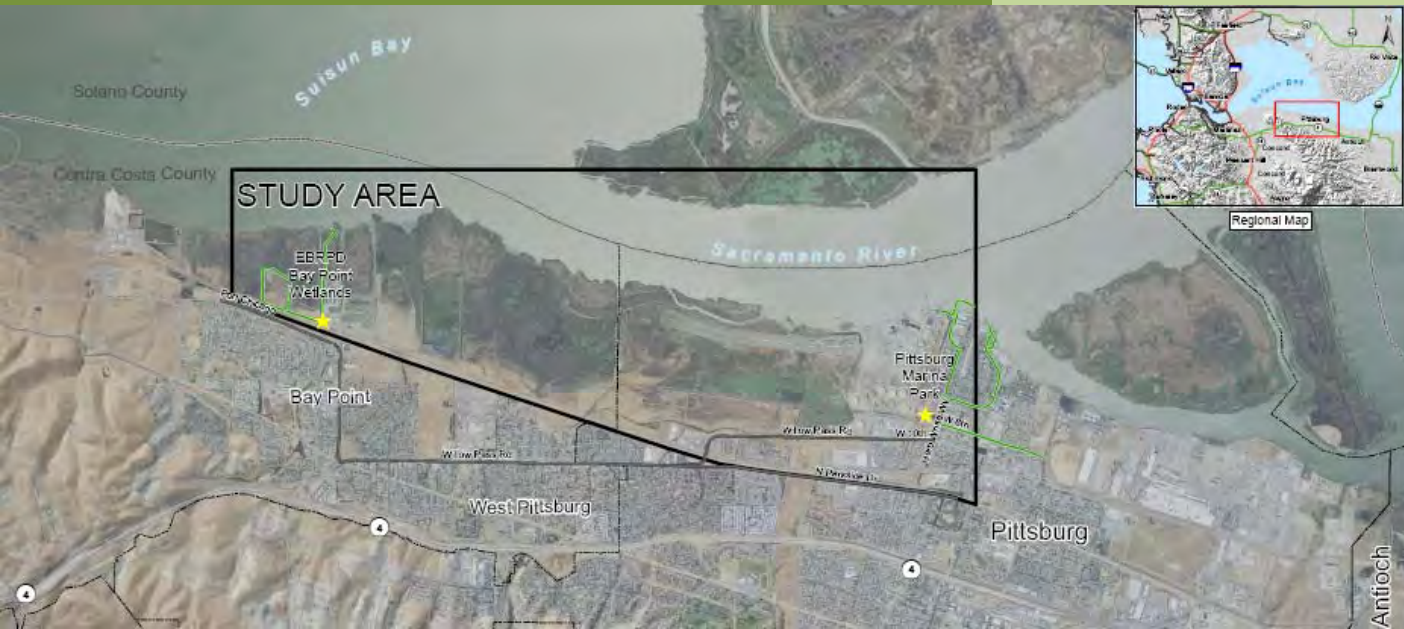
This portion of the Great California Delta Trail, between EBRPD's Bay Point Wetlands Regional Shoreline and Marina Park, covers a distance of approximately 5 miles. The project is a multiuse trail that will provide non-motorized access between these points, as well as opportunities for spur trails to the Sacramento River Delta shoreline, trail loops, and connections to existing bicycle facilities. The trail is planned as a minimum 10-foot-wide trail that meets Caltrans Class I standards. Portions of the trail would pass through lands owned by PG&E, Contra Costa Water District, and Mirant's power plant. Right of Way will need to be obtained from all of these to enable completion of the trail system.

The Great California Delta Trail was created in 2006 by SB 1556 (Torlakson) to acknowledge and support the unique natural resources of the Sacramento-San Joaquin Delta, the growing demands for public access to these resources, and the increasing recognition of the importance of outdoor recreation in addressing childhood obesity. Ultimately the Delta Trail will consist of a trail network through the five counties that contain the Delta region: Contra Costa, Sacramento, San Joaquin, Solano, and Yolo counties. This segment will be one of the first links in this network, providing critical access to the Delta shoreline, and serving a diverse and underserved population in eastern Contra Costa County.



For questions, please contact:
Sean Dougan, East Bay Regional Park District (510/544-2611, dougan@ebparks.org), or
Jeff Peters, Qesta Engineering (510/236-6114, x206, jpeters@questaec.com)

Project Location



Ambrose Recreation and Park District

Board Room
3105 Willow Pass
Road Bay Point, CA

March 31, 2011
6-9pm




The Great California Delta Trail

PRELIMINARY ENGINEERING STUDY

Bay Point Regional Shoreline to Marina Park in Pittsburg

March 31, 2011
Community Workshop

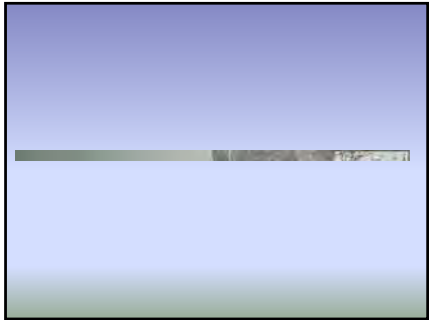




What is the Great California Delta Trail?

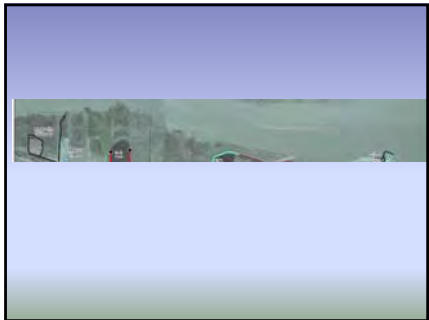
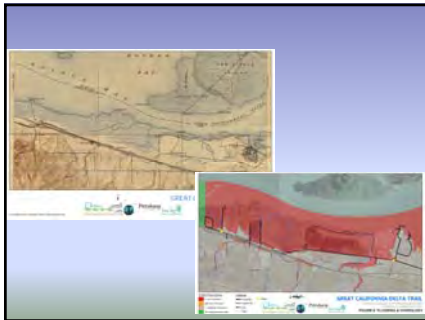
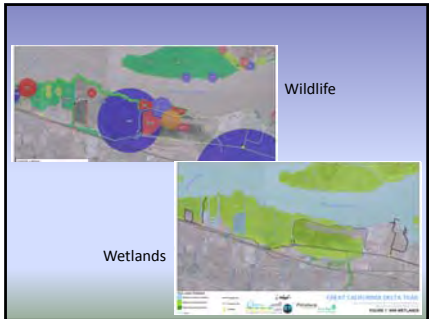
The Great California Delta Trail will be an interconnected regional network of land and water trails within the Delta region Contra Costa, Sacramento, San Joaquin, Solano & Yolo counties.

This segment, between EBRPRD's Bay Point Wetlands and Pittsburg's Marina Park, will be one of the first links in this network, providing critical access to the Delta shoreline with a safe, continuous and accessible route for pedestrians and bicyclists.



Study Area

- EBRPD Bay Point Regional Shoreline
- McAvoy Harbor (Trost family)
- Pacific Gas and Electric Company (PG&E) (former Harris Yacht Harbor; Shell Pond Site)
- Delta Diablo Sanitation District
- Contra Costa Water District
- GenOn Energy Inc (formerly Mirant)
- State Lands Commission (SLC)
- City of Pittsburg



Segment 1

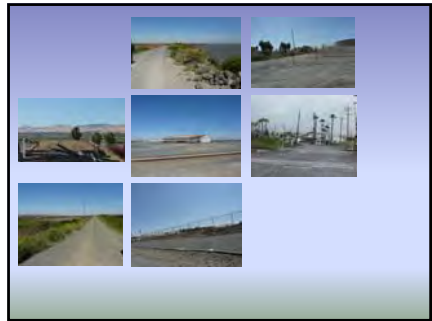
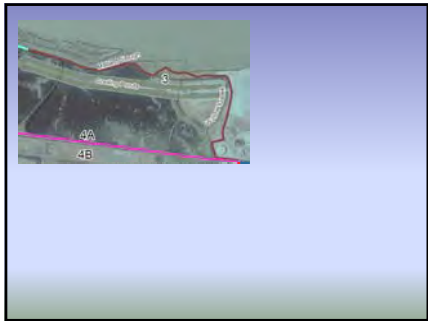
EBRPD Trailhead to CCWD Access Road

This slide features a map in the top left corner showing a route with red and yellow markers. Below the map are two aerial photographs. The left aerial photo shows a road with a red line indicating a path, with a legend below it listing: 'P. A. to 100 yd Alignment', 'Site T-1', 'Overlook T-1 & Road', and 'S. 100'. The right aerial photo shows a different section of the route.



CCWD Access Road to Mirant Property

This slide includes a map in the top left with a legend for: 'Proposed Alignment', 'Site T-1', 'Overlook T-1 & Road', 'Bridge', and 'Emergency Bridge Route'. To the right is an aerial photo of a 'SAND PUMP STATION' with labels '2A' and '2B'.



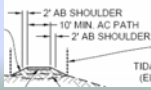
Connections

Segment 5

A 2x2 grid of photographs showing a park area with a sign that says 'MIRANT PARK'.

Segment Ranking

- Interpretive Features
- Cost

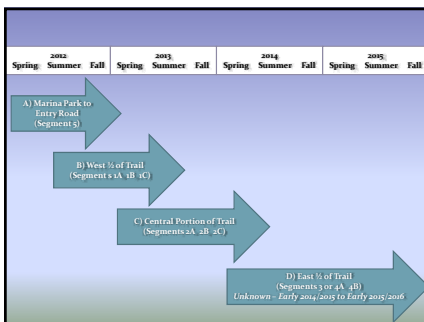


Trailhead Elements and Interpretive Displays

Segment	Construction Cost	Design Permitting & Inspection	Total Costs**
1	\$ 605,000	\$ 175,900	\$ 780,900
2	\$ 1,084,900	\$ 314,900	\$ 1,400,000
3	\$ 1,083,000	\$ 294,000	\$ 1,307,000
4	\$ 1,872,400	\$ 543,800	\$ 2,416,000
5	\$ 296,000	\$ 86,100	\$ 382,000
TOTAL (ALL SEGMENTS)	\$ 4,875,900	\$ 1,414,000	\$ 6,289,900
TOTAL PREFERRED PROJECT (SEGMENTS 1, 2, 3 & 4)	\$ 3,000,000	\$ 870,000	\$ 4,000,000

- Environmental Review and Permitting
- Design and Construction Documents
- Construction
- Trail Open for Use

Questions?



Segments	Implementation Timeline
A) Marina Park to Mirant Entry Rd. (Segment 5) •Secure Right of Way •Environmental Review & Perm it ng •Construction Plans •Completion of Construction Trail Open	•Spring 2012 •Summer 2012 •Early Fall 2012 •Late 2012/Early 2013
B) West 1/2 of Trail (Segments 1A -1B -1C) •Secure Right of Way •Environmental Review & Perm it ng •Construction Plans •Completion of Construction Trail Open	•Early Summer 2012 •Early Fall 2012 •Late Fall 2012 •Late Summer 2013
C) Central Portion of Trail (Segments 2A -2B -2C) •Secure Right of Way •Environmental Review & Perm it ng •Construction Plans •Completion of Construction Trail Open	•Early 2013 •Spring 2013 •Late Summer 2013 •Early Summer 2014
D) East 1/2 of Trail (Segments 3 or 4A -4B) •Secure Right of Way •Environmental Review & Perm it ng •Construction Plans •Completion of Construction Trail Open	•Early 2014 or 2015 •Summer 2014 or 2015 •Fall 2014 or 2015 •Early 2015 or 2016

Great California Delta Trail: Bay Point Regional Shoreline to Marina Park in Pittsburg

SIGN-IN SHEET

Bay Point Neighborhood Meeting, March 31, 2011

107

Name	Affiliation/Home Town	*Email
Steve Hoagland	Ambrose Board / Bay Point	steverhoagland@comcast.net
Andy Dawson	Ambrose Board Bay Point	andymdawson@comcast.net
Mae Cendana Tolinton	" "	mae.cendana@yahoo.com
BRUCE "ole" OHLSON	EBBC / PITTSBURG	BRUCEOLEOHLSON@HOTMAIL.COM
Janessa Harmon	Bay Point / Delta Regional League of Women's Club	janessaharmon@att.net
MICHAEL E KERN	BAY POINT (AMBROSE COMMUNITY GARDEN)	MEKORGANIC@YAHOO.COM
Charles Tremaine	Bay Point	ctremaine@shogobal.net
Christina Susan	Bay Point	tsosunadice@aol.com
Maurice Delmer	Assemblywoman Susan Bonilla	Maurice.Delmer@asm.ca.gov
Carolina Salazar	Sup. Karen Mitchell	carolinad@ carolina.salazar@bos.county.us
Eva Garcia	Ambrose Rec Pa	gova - dpw@ yahoo.com

* I want to be added to the mailing list for project updates