

# WILDFIRE HAZARD REDUCTION AND RESOURCE MANAGEMENT PLAN AND EIR

Second Public Meeting  
June 7, 2007

# PROJECT OVERVIEW

- Project Goals
- Work Program Overview
- Work Program Updates

# PROJECT GOALS

---

## Project Goals

- Reduce wildfire hazard on EBRPD park lands to an acceptable level of risk



## Project Goals

- Maintain and enhance ecological values for plant and wildlife habitat



## Project Goals

- Preserve aesthetic landscape values for park users and neighboring communities



## Project Goals

- Provide a vegetation management plan which is cost-effective to the District on an ongoing basis

\$\$

# WORK PROGRAM OVERVIEW

---

# Consultant Team

## PRIME CONSULTANT

### LSA Associates, Inc.

Malcolm Sproul *Principal-in-Charge*

Judith Malamut, AICP *Associate/Project Manager*

## RESOURCE INVENTORY RESOURCE MANAGEMENT PLAN

Malcolm Sproul *Principal/Task Leader*

Steven Granholm, Ph.D. *Principal Wildlife Biologist*

Richard Nichols *Sr. Biologist*

## NEPA/CEQA

Judith Malamut *Principal/Task Leader*

## CULTURAL RESOURCES

Christian Gerike *Principal/Task Leader*

Andrew Pulcheon *Cultural Resources*

## GIS/MAPPING

Greg Gallagher *GIS*

## WILDLIFE HAZARD MODELING AND ASSESSMENT

**Wildland Resource Management, Inc.**

Carol Rice

## GEOLOGY, HYDROLOGY, HAZARDOUS MATERIALS

**Baseline Environmental Consulting**

Bruce Abelli-Amen, CHG, RG

Julie Pettijohn, MPH, REA

Ralph E. Russell

## ALAMEDA WHIPSNAKE

**Swaim Biological Incorporated**

Karen Swaim

### **1. *Project Initiation***

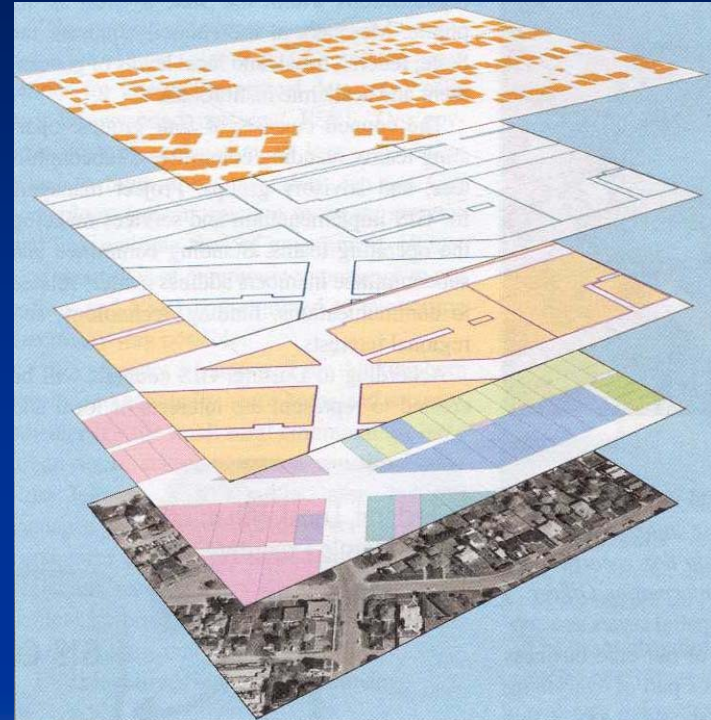
- Collect background materials
- Identify goals and issues
- Initiate GIS mapping program
- Identify technical advisors
- Public Meeting #1: June 1, 2006

## ***2. Resource Inventory & Wildfire Hazard Assessment***

- **Inventory and Map Baseline Conditions**
- **Identify areas at greatest risk along the urban/wildland interface**
- **Identify high hazard areas for fuel reduction**
- **Public Meeting #2: June 6, 2007**

### **3. *Resource Analysis***

Overlay resource maps and hazard assessment map to determine potential resource conflicts within areas of high wildfire hazard



## 4. *Fuels Management Recommendations*

- Develop a menu of treatment options for fuel reduction and habitat management
- Options will consider:
  - vegetation and wildlife resources
  - steep slopes
  - available tools and techniques
- Public Meeting #3

# Vegetation management tools may include

- Hand Removal



- Mechanical Control
- Herbicide Application



- Prescribed Fire



- Grazing



## ***5. Wildfire Hazard Reduction / Resource Management Plan***

- Identify overall benefits, environmental effects, and costs
- Recommend specific fire hazard reduction projects and resource enhancement prescriptions for high hazard priority areas
- Develop **cost estimates** for initial vegetation management and ongoing maintenance
- Public Meeting #4: Scoping Meeting

## 6. *Environmental Impact Report (EIR)*

- **Mitigation Measures for Impacts**
- **Alternatives Analysis**
- **Mitigation Monitoring Program**
- **Draft EIR/Plan Meeting**
- **Response to Comments - FEIR**



## ***7. District Board Public Hearings***

- **Prepare Final Plan**
- **EBRPD Board Hearings**
- **EIR Certification**
- **Wildfire Hazard Reduction and Resource Management Plan Adoption**

# WORK PROGRAM UPDATES

---

# PROGRAM UPDATES

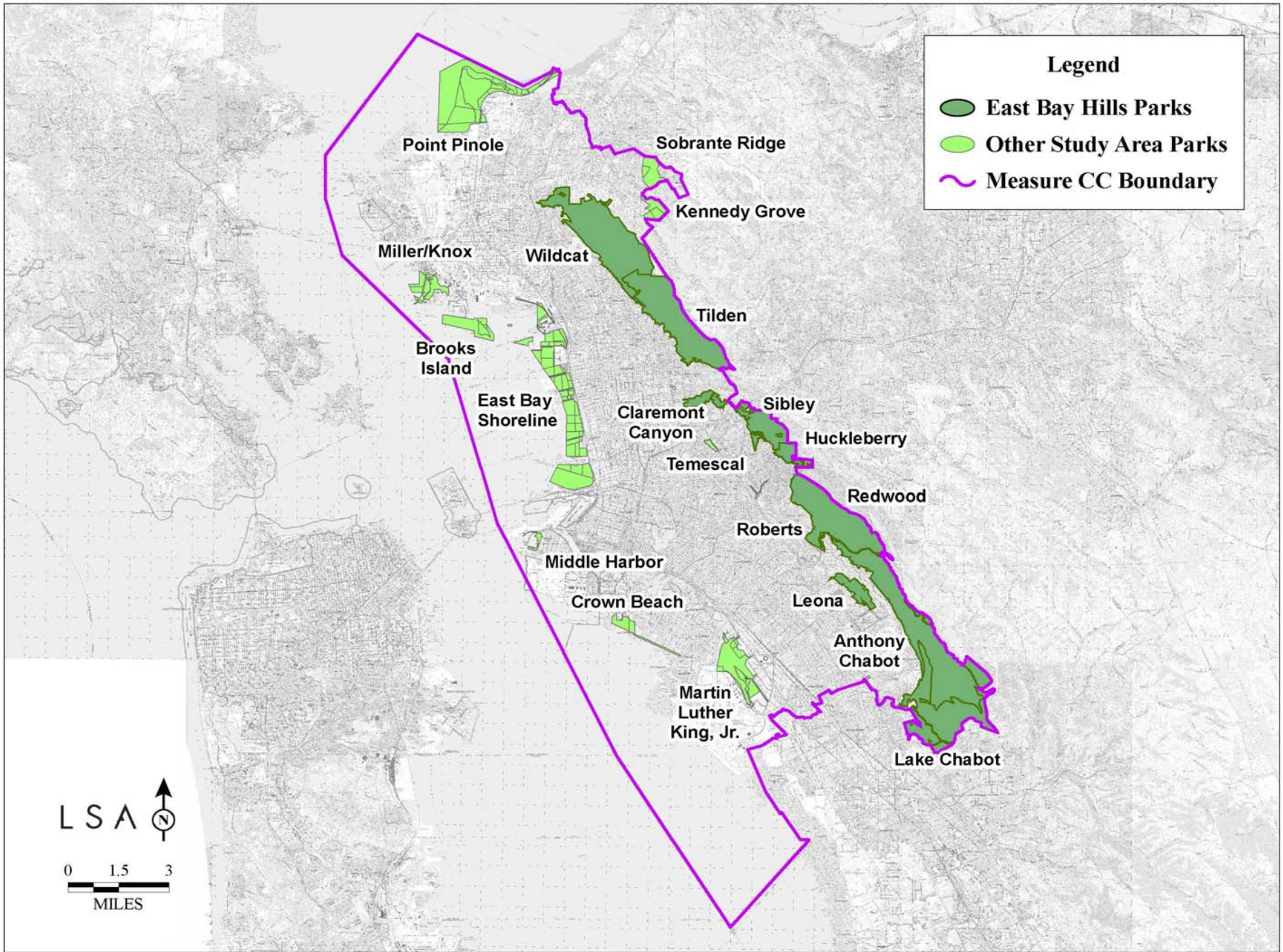
- Expansion of Study Area to include all **Measure CC Parks**
- In depth evaluation of District **Facilities at Risk**, existing **Fuel Management Areas**, High Hazard **Eucalyptus**
- Preparation of a **Programmatic Wildfire Risk Reduction Plan Component**



## ***1. Proposed Expansion of Study Area***

- Expanded Study Area includes **all District Parks within the Measure CC** boundary

Measure CC is the bond measure passed in 2004 that funded the wildfire hazard reduction plan and other District projects



## 2. *Inclusion of Facilities at Risk*

- Assess wildfire hazards for high value District Facilities at Risk, such as:
  - Tilden Merry-Go-Round
  - Chabot Equestrian Center
  - Tilden Botanic Garden

## 2. ***Assessment of Existing Fuel Management Areas***

- Evaluate current District fuel management areas
- Assess FEMA funded fuel reduction projects

## 2. ***Assessment of Eucalyptus Hazards***

- Evaluate all eucalyptus groves:
  - Proximity to homes
  - Fuel condition
  - Position on slope and elevation
  - Potential for torching and ember throw
  - Understory vegetation

### 3. *Preparation of Programmatic Plan Component*

- Prepare fuel reduction prescriptions for each vegetation type that will identify:
  - Pre-treatment assessment methodology
  - Treatment performance standards
  - Criteria and standards for monitoring
  - Practices and standards to reduce impacts

# Questions?

# Wildfire Hazard Assessment Process and Priority Areas

Carol Rice,

Wildland Resource Management Inc.



# BASELINE CONDITIONS

---

# Baseline Conditions

- Baseline Conditions Considered
- Mapping & Identification of Resources
- Biological Resources

## Baseline Conditions

### **1. *Baseline Conditions Considered***

- Biological Resources
- Hydrology
- Geology
- Land Use
- Cultural Resources
- Climate
- Air Quality
- Visual Resources

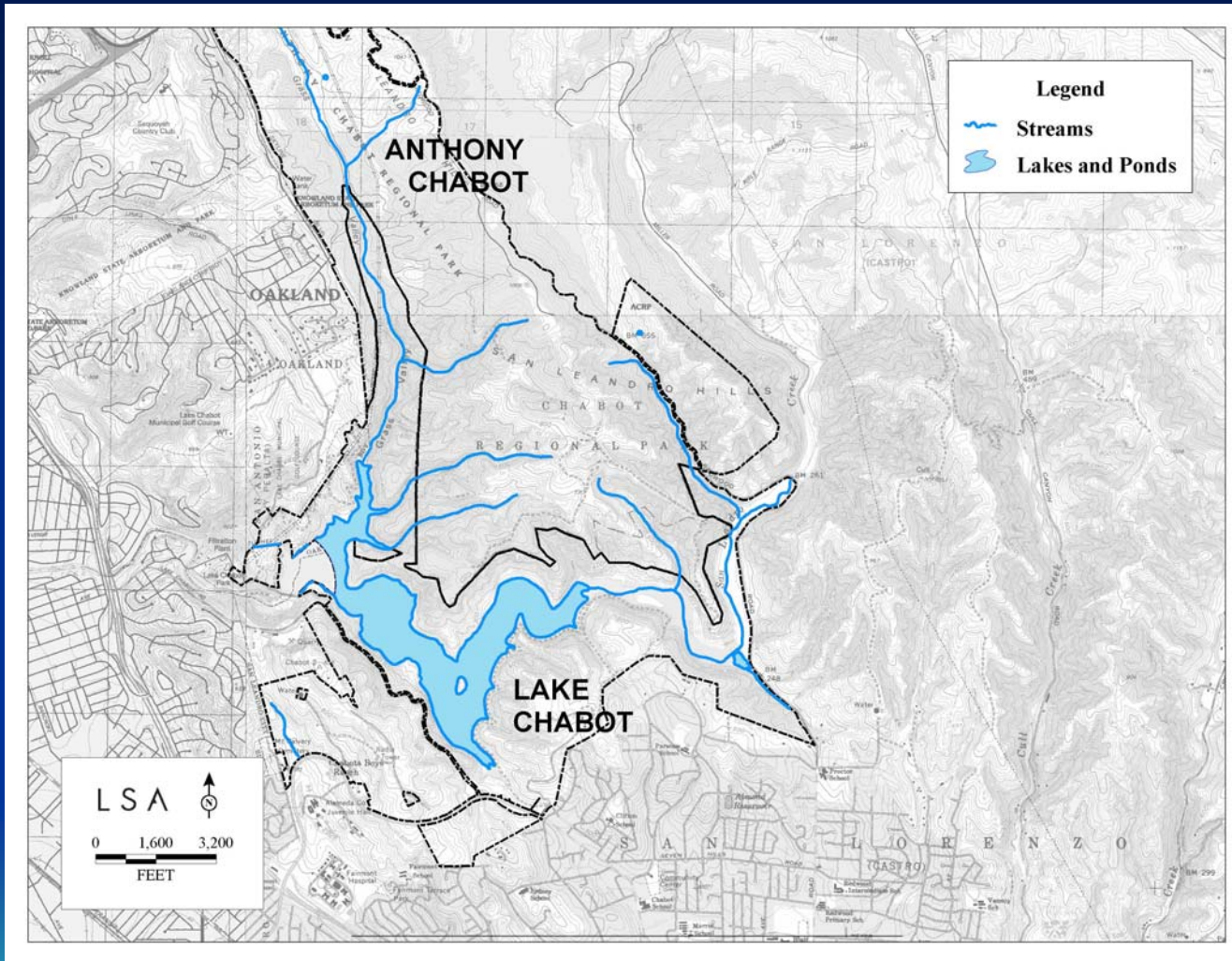
## ***2. Mapping & Identification of Resources***

- GIS mapping of Resources: vegetation, special status species, cultural resources, hydrological features, topographic features
- Evaluate high value resources, e.g., special status species, cultural resources, park structures

# Baseline Conditions - Vegetation



# Baseline Conditions - Hydrology



# Baseline Conditions



Biological Resources  
Richard Nichols, LSA

# NEXT STEPS

---

# NEXT STEPS

- Conduct resource conflict analysis for the Wildfire Hazard Assessment areas
- Identify fuel reduction and habitat management options & recommendations
- Public Meeting #3