

## Greathouse Visitor Center

Greathouse Visitor Center is located in an underground room excavated by the silica-sand miners in the mid-1920s. Displays explain the area's mining, cultural and geologic history, as well as the past and current role of the mineral industry. General park information, maps, brochures, and souvenirs are also available. The visitor center is open from 10 am to 4:30 pm on weekends and most holidays from March through November. Admission is free and all ages are welcome.

Greathouse Visitor Center will be closed during 2011 and 2012.



Hazel-Atlas Mine crew, 1930s. Those identified in this photograph at the Hazel-Atlas upper workings include Earl Bell, powder man, first row, left; Art Latham, mine foreman, first row, right. George Dossey, miner, second row, left; and Oscar Peterson, sand mill foreman, second row, right. The others are unidentified. *Courtesy of the Dorothy Greathouse Collection*

Tickets for the noon and 3 pm first-come/first-served mine tours can be purchased on Saturdays and Sundays from March-November at the Sidney Flat Visitor Center located at Park Headquarters.

## What Else Will Interest Me?

Black Diamond Mines is a nearly 6,000-acre preserve, which contains three historic townsites: Nortonville, Somersville, and Stewartville. In addition to Hazel-Atlas Mine, the park contains historic Rose Hill Cemetery, several mine openings to explore, and 65 miles of trails. Park Naturalists conduct a variety of programs relating to the park's natural and historic resources.

Stands of Coulter pine and black sage are at the northernmost limit of their distribution and several rare and/or endangered species have been found among the valley grassland, oak woodland, and chaparral plant communities.

## Directions

**Take HWY 4 to the Somersville Road South exit in Antioch. Drive south on Somersville Road (into the hills) to the parking lot at the end of the road.**

## QUESTIONS:

If you have any questions about the East Bay Regional Parks, call or email a Park District naturalist at one of the Visitor Centers listed below.

**ARDENWOOD HISTORIC FARM**  
Fremont 510-544-2797, [awvisit@ebparks.org](mailto:awvisit@ebparks.org)

**BLACK DIAMOND MINES**  
Antioch 510-544-2750, [bdvisit@ebparks.org](mailto:bdvisit@ebparks.org)

**BOTANIC GARDEN**  
Berkeley 510-544-3169, [www.nativeplants.org](http://www.nativeplants.org)

**COYOTE HILLS REGIONAL PARK**  
Fremont 510-544-3220, [chvisit@ebparks.org](mailto:chvisit@ebparks.org)

**CRAB COVE at CROWN BEACH**  
Alameda 510-544-3187, [ccove@ebparks.org](mailto:ccove@ebparks.org)

**SUNOL REGIONAL WILDERNESS**  
Sunol 510-544-3249, [svisit@ebparks.org](mailto:svisit@ebparks.org)

**TILDEN NATURE AREA/EEC and LITTLE FARM**  
Berkeley 510-544-2233, [tnarea@ebparks.org](mailto:tnarea@ebparks.org)

Text: Traci Parent  
Design: Doyle Wegner  
Cover Photo: Hazel-Atlas portal

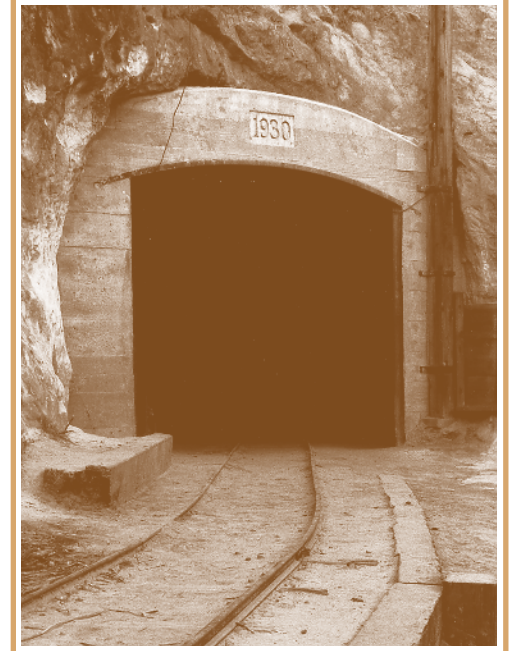
This brochure is provided as a public service of the Interpretive and Recreation Services Department of the East Bay Regional Park District.

 **EAST BAY REGIONAL PARK DISTRICT**  
2950 Peralta Oaks Ct., P.O. Box 5381  
Oakland, CA 94605-0381  
1-888-EBPARKS  
TDD phone 510-633-0460  
[www.ebparks.org](http://www.ebparks.org)



# HAZEL ATLAS MINE

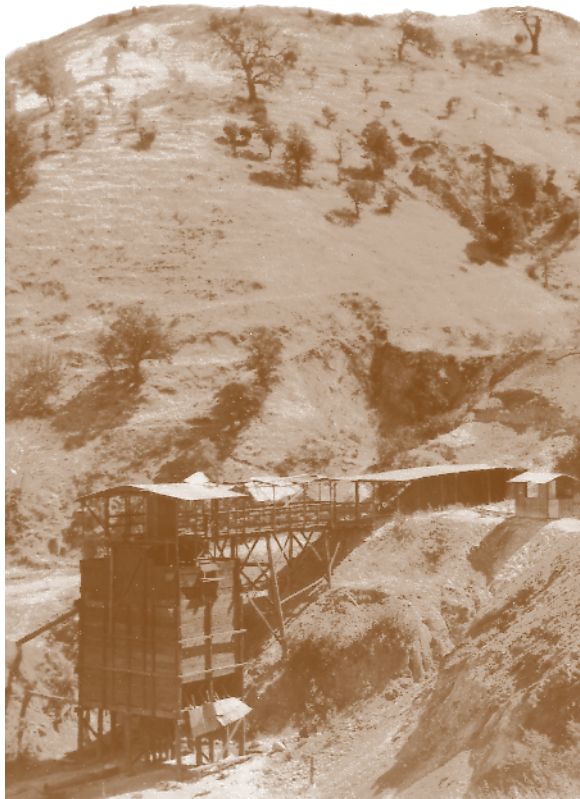
Black Diamond Mines  
Regional Preserve



 **EAST BAY REGIONAL PARK DISTRICT**  
[www.ebparks.org](http://www.ebparks.org)

## Welcome to Black Diamond!

Black Diamond Mines Regional Preserve was the site of California's most productive coal field and was a major source of glass-making and foundry sands. The Hazel-Atlas silica sand mine has been restored as a mining museum and visitor center.



Greathouse Portal sand bunker, circa 1948  
*Courtesy of the Rick Yarborough Collection*

## Mining History

From the mid 1850s to the early 1900s, a dozen mines supplied nearly four million tons of coal to the rapidly expanding urban and industrial centers of the San Francisco Bay Area. Rising production costs and the advent of oil as an energy source eventually ended production and turned five mining communities into ghost towns. Later, from the 1920s through the late 1940s, silica-rich sand was mined by the Hazel-Atlas Glass Company for the production of glass products and by the Roberts Sand Company for use in the Columbia Steel foundry. The museum and visitor center in Hazel-Atlas Mine help preserve the history of these important mining operations.

## Hazel-Atlas Mine

A 950 feet section of Hazel-Atlas Mine has been restored to appear as it did when the mine was active. On a guided walk, visitors see mining methods, equipment, and tools typical of the 1940s. Plant and animal fossils in the tunnel walls provide evidence of the area's climate and appearance 50 million years ago when the sand and coal deposits were formed.



R. Marvin Greathouse, second from left, founder of the silica mine at Somersville townsite, circa 1933. *Courtesy of the Dorothy Greathouse Collection*

## When Can I Visit?

Weekend tours are available for the general public from March through November. Reservations are highly recommended. Weekday programs are available for organizations and school groups (minimum 10 participants). Reservations are required.

## How Do I Make Reservations?

Weekend programs can be arranged with VISA or MasterCard by calling: **1-888-EBPARKS** or by visiting [www.ebparks.org](http://www.ebparks.org)

Weekday programs can be arranged by calling **510-544-2750**.

## Are There Age Restrictions?

For safety reasons, children under the age of seven are not permitted in the mining museum.

## How Much Does It Cost?

Tours cost \$5.00 per person and last nearly two hours. A parking fee may be charged. Fees subject to change.

## What Should I Wear?

Wear clothing suitable for underground temperatures of 56°F. Hard hats and flashlights will be provided.

## Dogs

Dogs are welcome in Greathouse Visitor Center but must be on a leash. Dogs are not allowed on mine tours.



Hazel-Atlas bunker, circa 1933.  
*Courtesy of the Dorothy Greathouse Collection*