

# East Bay Regional Park District (EBRPD)

East Counties Parks

Habitat Conservation Plan / Natural Community Conservation Plan (HCP/NCCP)

**Presented to EBRPD  
Executive Committee  
September 25, 2009**

**DOUG BELL, EBRPD WILDLIFE PROGRAM MANAGER  
PAOLA BERNAZZANI, ICF/JONES & STOKES**

# What Will Our HCP Accomplish



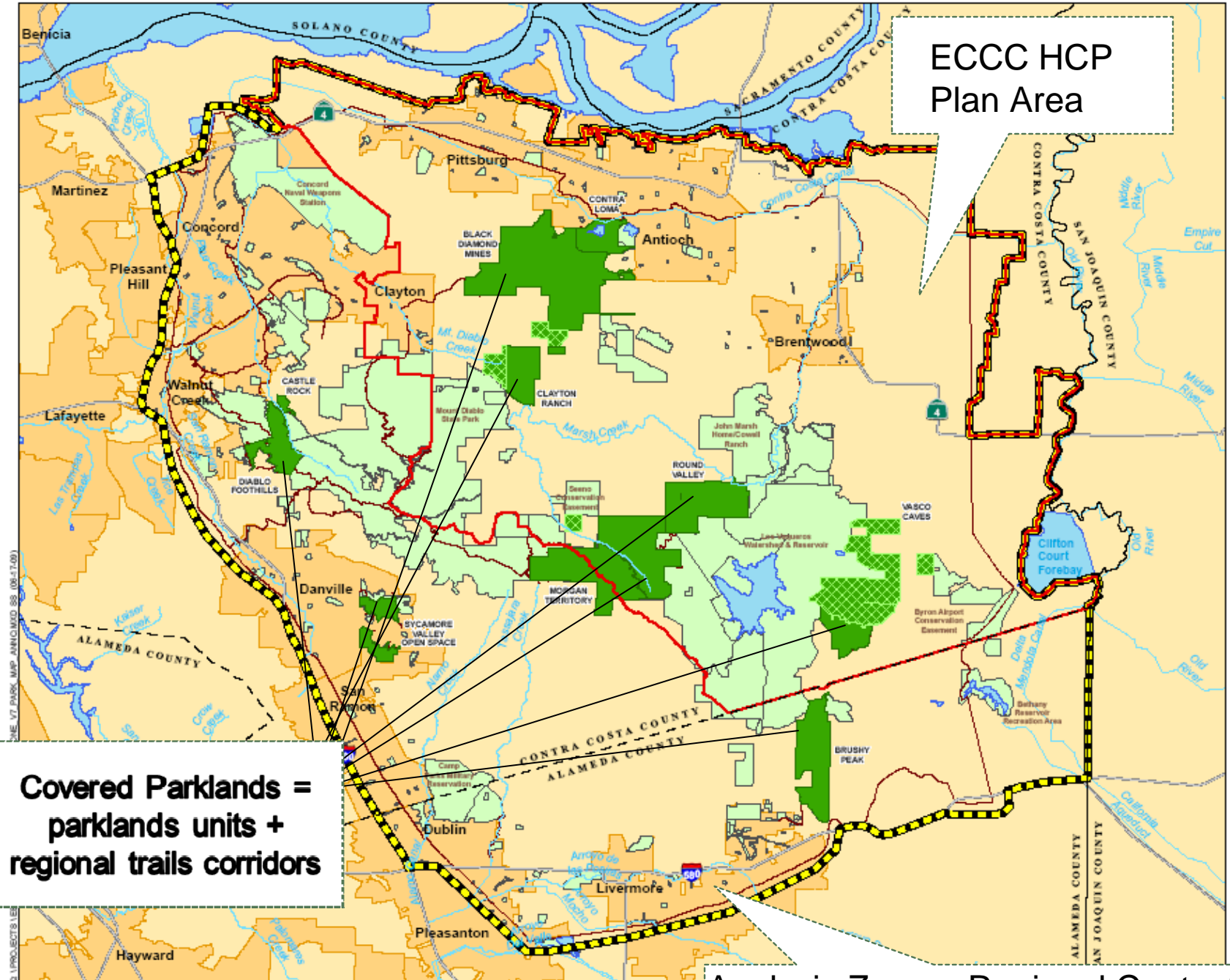
- Allow us to effectively balance species and habitat protection with recreation and park use (our mission!).
- Provide regulatory compliance for operations, maintenance and minor development within East Counties parks.
- Long range plan that eliminates lengthy and costly permit procedures.
- Encompasses most of those parks and future park areas not presently covered by East Contra Costa County HCP/NCCP.

# ECCC HCP Plan Area

- Legend**
-  Analysis Plan Area
  -  Regional
  -  District C Parkland



Sources: ESRI (2010)  
East Alameda  
East Cont



**Covered Parklands =  
parklands units +  
regional trails corridors**

**Analysis Zone = Regional Context**

DATE: 07-17-2013, MAP: ANNOUVED, SS: (08-17-00)  
 PROJECTS: 15

# Integration with other Conservation Efforts



## **Completed and Permitted**

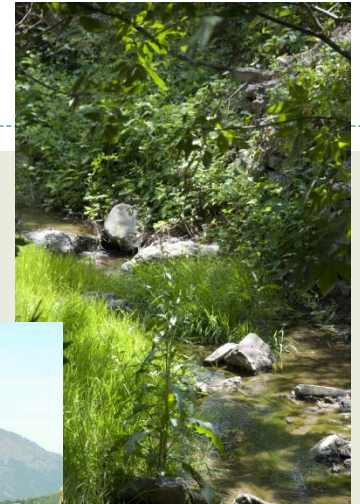
- East Contra Cost County HCP/NCCP
- PG&E San Joaquin Valley O&M HCP

## **Plans In Progress**

- Altamont Pass Wind Resource Area NCCP/HCP
- East Alameda County Conservation Strategy
- PG&E Bay Area O&M HCP
- Santa Clara Valley HCP/NCCP
- SFPUC Alameda Watershed O&M HCP

# Covered Parklands

- **Black Diamond Mines Regional Preserve**
- Sycamore Valley Regional Open Space Preserve
- **Round Valley Regional Preserve**
- **Vasco Caves Regional Preserve**
- Contra Loma Regional Park
- **Morgan Territory Regional Preserve**
- Brushy Peak Regional Preserve
- **Diablo Foothills Regional Park/Castle Rock Regional Recreation Area**
- Clayton Ranch Land Bank
- Sycamore Valley Regional Open Space Preserve
- **Regional Trail Corridors**



# Covered Species



- **Covered Species** = species on the final permits and for which “take” is authorized
- Over 150 special status species evaluated
- 23 recommended as Covered Species for final permits
- 9 plant and 14 wildlife
- Will evaluate benefits of Plan to many other species

# A Few Proposed Covered Species

## Wildlife

**Alameda whipsnake**



**Golden Eagle**



**Vernal pool fairy shrimp**

**San Joaquin kit fox**



## Plants

**Fragrant fritillary**



**Round-leaved filaree**



# Covered Activities



- Criteria for Covered Activities/Projects
  - Within HCP/NCCCP Study Area
  - Occur during HCP/NCCCP Permit term
  - Activity needs “take” coverage
  - Impacts are well defined
  - Consistent with HCP/NCCCP schedule

# Proposed Covered Activities



- Infrastructure Operations and Maintenance
- Wildlands Management
- Public Access and Park Development
- HCP Implementation

# Target Audiences/Stakeholders



- Environmental Groups
- Recreation Groups (hikers, cyclists, equestrians, etc.)
- Conservation Groups
- Cultural Resources Groups
- Water Districts
- Grazing Tenants
- CA State Parks
- East CC County HCP
- Contra Costa and Alameda Counties
- Wind/Energy Consultants
- City and Town Officials
- Culturally diverse Groups

# Public Input Opportunities



- Meetings
  - EBRPD Committee Meetings - Quarterly
    - ✦ Executive Committee
    - ✦ Park Advisory Committee
  - Community meetings - Annual
    - ✦ HCP/NCCP development, review, and approval
    - ✦ Public review of associated environmental documents
- Speakers Bureau presentations
- Comments
  - Provide written or verbal comments via meetings, web, email, fax, or mail to Program Manager

# Next Steps



## Phase 1

- Finishing Draft Chapters 1-3 and providing for review
- Presentations to Park Advisory Committee (fall)
- Community Meeting (winter)

## Phase 2 (pending)

- Public Draft HCP/NCCP
- Community Outreach
- EBRPD Board of Directors



# Questions ?



## For More Information:

Douglas A. Bell, PhD  
Wildlife Program Manager  
Stewardship, EBPRD  
2950 Peralta Oaks Court  
Oakland, CA 94605  
510-544-2341  
[dbell@ebparks.org](mailto:dbell@ebparks.org)  
[www.ebparks.org](http://www.ebparks.org)