

**EBMUD/EBRPD
LIAISON COMMITTEE MEETING
Wednesday, April 7, 2010
3:00 p.m.**

EBRPD Trudeau Training Center – Main Room
11500 Skyline Blvd.
Oakland, CA

Agenda

<u>Topic</u>	<u>Status</u>
1. San Pablo Dam/Kennedy Grove	(EBMUD/EBRPD)
2. EBRPD Land Acquisition near Briones Reservoir	(EBRPD)
3. Invasive Mussel Prevention Program	(EBMUD/EBRPD)
4. Pinole Valley Mitigation Bank	(EBMUD)
5. Public Comment	
6. Confirm Next Meeting	
(I) Information	
(D) Discussion	
(R) Recommendation	

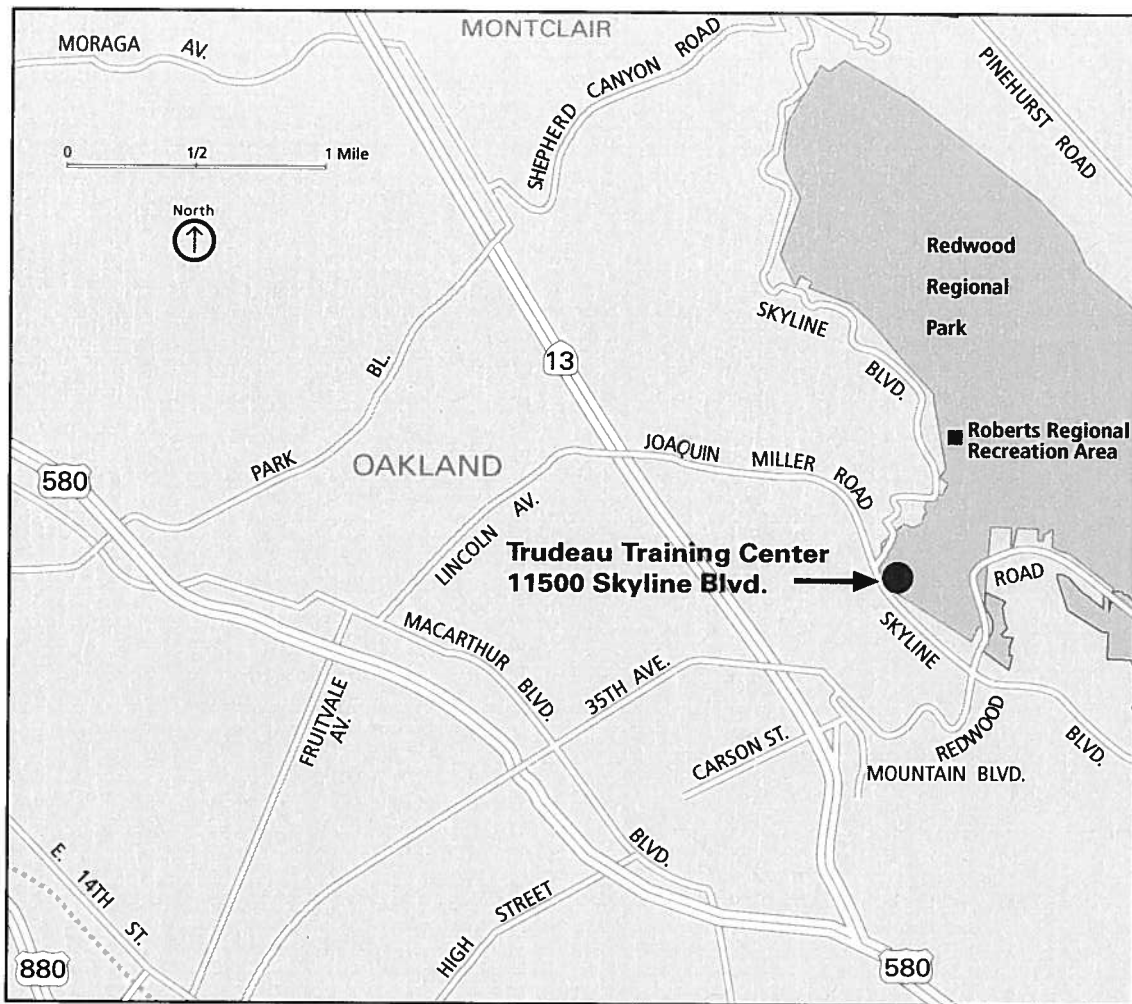
Distribution List

Packets:

Directors: John Sutter, Doug Siden, Carol Severin
Pat O'Brien, General Manager
Rosemary Cameron, AGM, Public Affairs
Allen Pulido, Clerk of the Board

Agenda Only:

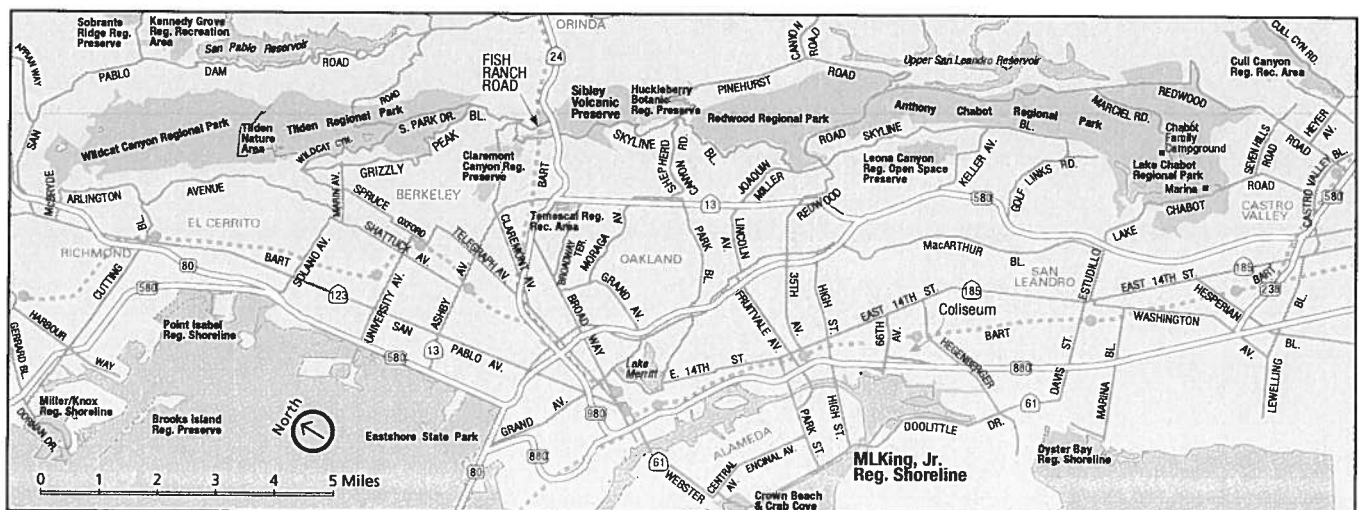
AGM's
Dave Kalahela, President, Local 2428
Yolande Barial, Clerk of the Board's Office



From Downtown Oakland, Take I-580 East to the 35th Avenue exit in Oakland and turn left onto 35th Avenue. 35th becomes Redwood Road; continue uphill on Redwood Road. At the top of the hill, turn left onto Skyline Blvd. The Trudeau Center is about one-half mile ahead on the right, just before Redwood Road's intersection with Skyline Blvd.

From Berkeley, take Highway 13 towards Oakland. Exit at Joaquin Miller Road and turn left. Drive uphill for about 1 mile; Joaquin Miller Road becomes Skyline Blvd. Continue straight on Skyline Blvd. for a short distance and turn left into the Trudeau Center.

From Hayward, take I-580 west towards Oakland. In Oakland, merge onto Highway 13 northbound. Take the Redwood Road exit and continue uphill at the exit to Redwood Road. Turn right onto Redwood Road. At the top of the hill, turn left onto Skyline Blvd. The Trudeau Center is about one-half mile ahead on the right, just before Redwood Road's intersection with Skyline Blvd.



SAN PABLO DAM SEISMIC UPGRADES PROJECT

CURRENT STATUS

The construction contract for the San Pablo Dam Seismic Upgrades Project was awarded in May 2008 and field work began in June 2008. The major construction work at the site, consisting of cement deep soil mixing (CDSM) and associated earthwork was completed in January 2010. At that time, the California Division of Safety of Dams lifted all operating restrictions on San Pablo Reservoir, and normal water levels have been restored.

The major work that remains is some jet grouting at the western toe of the dam around the outlet structure and geotechnical instrumentation installation. This work should be completed by June.

In September 2009, EBMUD completed the design of environmental mitigations for the project. Red-Legged Frog and Alameda Whipsnake as well as general wetland habitats are to be constructed at the Pavon Creeks area of Pinole Valley and at the Scow Canyon borrow area sites, per the requirements of the environmental permits for the project. In order to take advantage of optimum planting schedules, this portion of the project is scheduled to be awarded in April 2010. Currently, EBMUD is working with local cities and EBRPD to arrange for plantings in the San Pablo Creek Watershed and with a local conservation group, SPAWNERS, to restore and enhance select areas in the San Pablo Creek Watershed.

EBRPD staff continues to work closely with EBMUD's contractors and community relations staff. The upcoming Storytelling Festival, which is scheduled for May, has been discussed and coordinated. There are no unexpected park issues or impacts on Kennedy Grove Regional Park for the remainder of the contract. Park access road closures/detours continue to work successfully as planned, with the San Pablo Dam access road open on weekends and major holidays. We expect to complete paving and open the access road on weekdays for park users prior to the July 4th weekend.

NEXT STEPS

- Continue community outreach – ongoing.
- Award contract for construction of mitigation areas – April 2010.
- Complete remaining site work – June 2010.
- Contract completion – July 2010.

DMD:EZB:tad

I:\SEC\04-07-10 EBRPD Items\E&C San Pablo Dam Seismic Upgrades Project.doc

EBRPD LAND ACQUISITION NEAR BRIONES RESERVOIR

CURRENT STATUS

EBRPD's and EBMUD's Land Acquisition staffs have identified a potential land acquisition located between EBMUD's Briones Reservoir, EBRPD's Briones Regional Park, and UC Berkeley's Open Space which is of interest to both EBMUD and EBRPD. The "Thomas Property" consists of 3 parcels totaling 36 acres accessed by Happy Valley Road in Lafayette. The property currently has a tenant-occupied farmhouse which is in a dilapidated condition. However, the property owner desires to develop the property into a larger scale compound and horse facility. To accomplish this, the property owners will need a County Health Department approval for a larger septic system and other entitlements from Contra Costa County. To date the Contra Costa County Health Department has not allowed the development of a larger septic system on this property.

Because of the difficulties in obtaining the necessary development entitlements the property owner approached EBRPD's Land Division regarding sale of the property to the Park District. EBRPD is currently having an appraisal conducted of the property. EBRPD staff will have a map highlighting the "Thomas Property" at the Liaison Committee meeting and will be able to provide an update on this potential acquisition project.

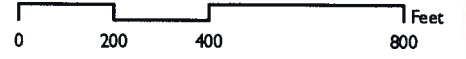
NEXT STEPS

- Completion of Appraisal expected by mid-April
- Potential acquisition negotiation with property owner



BRIONES REGIONAL PARK
Thomas Brothers, LLC Property
APNs: 365-230-025, -036
35.35 Acres (Approx) Total
Topographic View

EBRPD
12/14/09
c:\bstone\mxd projects\appraisal\
bn_thomas bros-topo.mxd



EBRPD
Briones
Regional Park

365-230-025
16.91 acres

365-230-036
18.44 acres

EBMUD
Briones
Reservoir

UC Berkeley
Open Space

Happy Valley Road

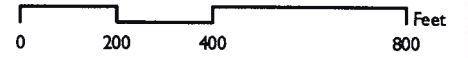
Location Map





BRIONES REGIONAL PARK
Thomas Brothers, LLC Property
APNs: 365-230-025, -036
35.35 Acres (Approx) Total
Aerial View

EBRPD
12/14/09
c:/bstone/mxd/projects/appraisal/
bn_thomas_bros-aerial.mxd



**EBRPD
Briones
Regional Park**

**365-230-025
16.91 acres**

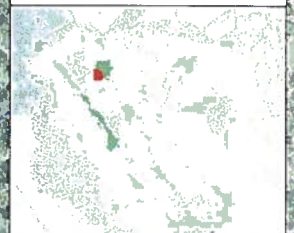
**365-230-036
18.44 acres**

**UC Berkeley
Open Space**

**EBMUD
Briones
Reservoir**

Hobby Valley Road

Location Map



INVASIVE MUSSEL PREVENTION PROGRAM

CURRENT STATUS

EBMUD's Invasive Mussel Prevention Program entered its third year this past February. Over 35,000 boats have been inspected under this program which is very similar to the EBRPD program. Invasive mussels have not been detected in EBMUD reservoirs, nor have they been observed during any boat inspection. About 1% of all boats continue to be prohibited from launching on EBMUD reservoirs due to 1) location of registration, 2) location of most recent use, or 3) failure to pass the inspection due to water or moisture in hull, motor, etc.

Since the last Liaison Committee update on this subject in October 2009, an MOU has been executed among Bay Area agencies for a standardized prevention program. Agencies participating in the MOU, the Bay Area Mussel Prevention Consortium, agree to conduct a prevention program which includes reservoir monitoring, boating controls including inspections, and a public information program. EBMUD and EBRPD have been active in developing the Consortium program and both agencies have signed the MOU. Recently, the Consortium members were notified that the California Department of Fish and Game allocated \$250,000 in its current year budget for the Consortium prevention program. This money will be distributed in the amount of \$50,000 to each of the five participating counties. EBMUD and EBRPD will each receive a portion of the funds allocated to Alameda and Contra Costa Counties. Agencies in the consortium made a \$2.5 million federal appropriation request in February. These funds would be used to offset prevention program costs.

EBMUD and EBRPD continue to practice a mutual banding program. Under this program boats leaving an EBMUD or EBRPD reservoir can request a band which attaches the boat to the trailer and identifies that the boat has been inspected and is mussel-free. Banded boats do not require an inspection at an EBMUD or EBRPD reservoir, thus reducing waiting time for the boaters and minimizing resource needs by reservoir operators. In the future, this program may be expanded to include other Consortium members.

NEXT STEPS

- Continue implementation of public notification, monitoring and boating controls
- Participate in the Bay Area Consortium so that infestation is prevented regionally

PINOLE VALLEY MITIGATION BANK

CURRENT STATUS

EBMUD owns approximately 3700 acres of property in the Pinole Valley. This property was originally intended for development of a water supply reservoir; however, the land is not needed for any current or planned water supply use. At present, the land is leased for grazing and agriculture. The Pinole Valley Mitigation Bank (PVMB) will preserve approximately 3000 acres of EBMUD's Pinole Valley property as open space while maximizing benefit to EBMUD by generating revenue through sales of mitigation credits to public or private entities. It is anticipated that the bank will have credits for Alameda whipsnake, California red-legged frog, wetlands, oak woodland, and steelhead. These credits can be used by EBMUD directly, or may be purchased by other public agencies or private entities to mitigate for environmental impacts of their projects within the bank service area.

As an initial step in creating the PVMB, EBMUD plans to establish a smaller conservation bank on approximately 300 acres of the Pinole Valley. This smaller bank, called the Oursan Ridge Conservation Bank (ORCB), will establish California red-legged frog and Alameda whipsnake credits. Revenues from this bank will fund development of the larger PVMB. The prospectus for the ORCB was submitted to the US Fish and Wildlife Service (USFWS) and the California Department of Fish and Game (CDFG) in February 2010 and an agency review meeting was held in March. EBMUD expects agency approval of the prospectus by June and bank establishment by the end of the year. The attached map shows the PVMB and ORCB boundaries.

As the ORCB goes through permitting and development, EBMUD will still continue to work on the planning and permitting for the larger and more complex PVMB. Over the past 18 months, EBMUD has been working with a large group of resource agencies charged with approving the PVMB. These agencies include the USFWS, US Army Corps of Engineers, US EPA, National Marine Fisheries Service (NMFS), California Department of Fish and Game, and the California Regional Water Quality Control Board. EBMUD is currently completing a revised prospectus for the PVMB which incorporates the results of recently approved wetlands delineation and a site visit with NMFS to address steelhead credits. EBMUD anticipates submitting the final Prospectus for the project to the resource agencies in May 2010. This will establish the bank size, type and number of credits, service areas for credit sales, and a release schedule for credits.

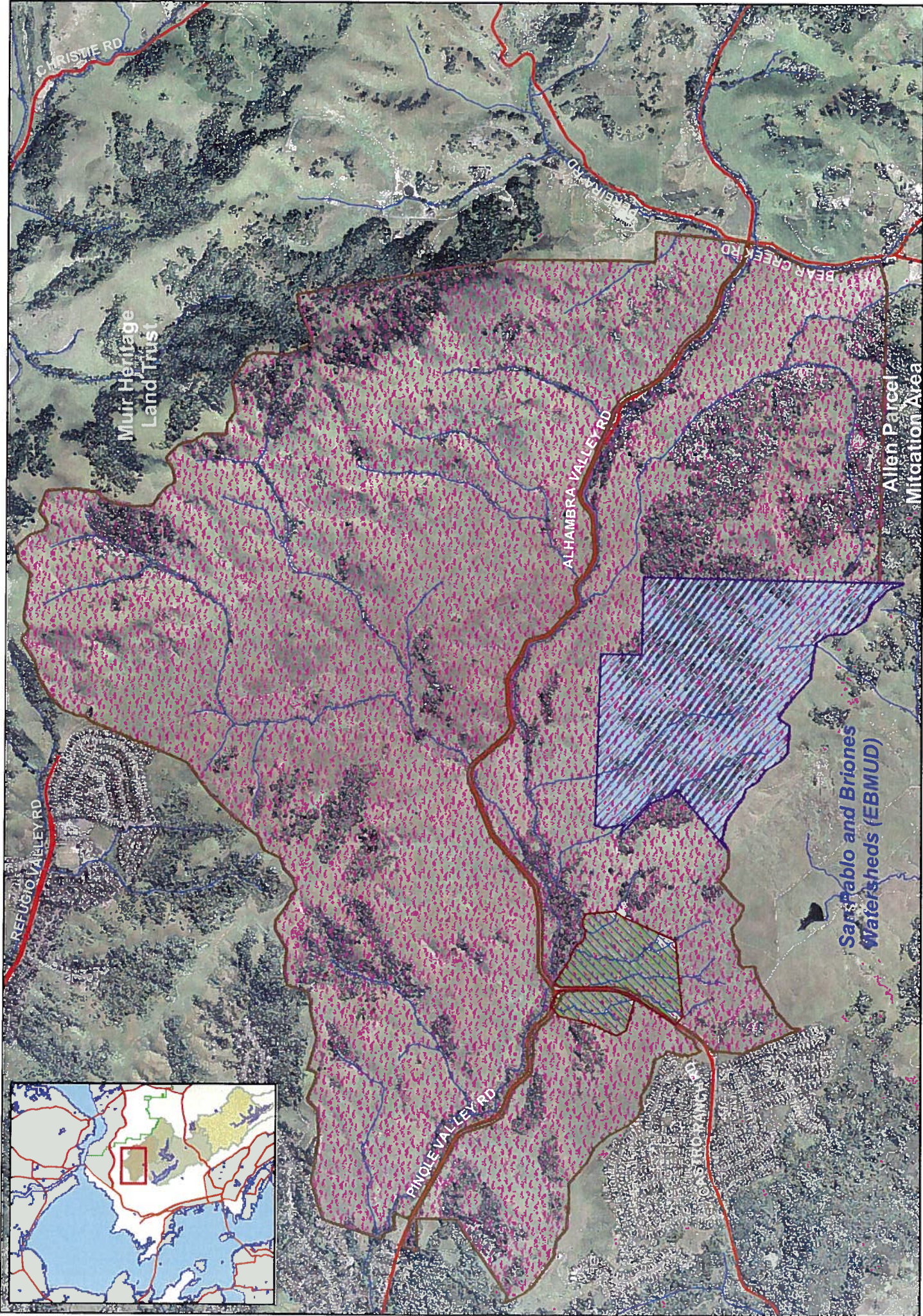
NEXT STEPS

ORCB

- Receive approval of prospectus - June 2010
- Complete enabling agreement and conservation easement – October 2011
- Initiate sales of mitigation credits– December 2010

PVMB

- Submit revised prospectus – May 2010
- Receive approval of prospectus – August 2010



Pinole Valley Mitigation Lands on EBMUD Owned Lands in Pinole Valley Watershed

 Pinole Valley Mitigation Bank (2,900 acres)
 Pavon Creek Mitigation Area (~65 acres)
 Oursan Conservation Bank (~275 acres)

 EBMUD
 g:\projects\pinole\mxd\ Pinole Valley Mitigation Lands.mxd

0 1,000 2,000 Feet
