



# Albany Beach Restoration and Public Access Study

## Eastshore State Park

East Bay Regional Park District

February 23, 2010

**E**astshore State Park extends 8.5 miles along the East Bay shoreline from the Bay Bridge to Richmond. The shoreline reflects the influences of both natural systems and human intervention with natural features such as tidal marshes and beaches intermingled with man-made elements such as municipal landfills.

### **Feasibility Study**

The District is enhancing and restoring a number of ecosystems and habitat types throughout the park and is in the process of conducting a study of the Albany Beach area that examines the feasibility of habitat restoration and public access improvements envisioned by the the adopted Eastshore State Park General Plan. Albany Beach consists of a small sand beach and dunes that are located at the crook in the shoreline between the Albany Neck and Golden Gate Fields.

Features to be examined by the feasibility study include restoration and protection of Albany Beach and dune habitats, expansion of dune



areas behind the beach, installation of compatible public access improvements and other park facilities, enhancement of water access to San Francisco Bay, closing of a key gap in the San Francisco Bay Trail and stabilization of shoreline erosion areas. Findings from the study will be used to guide the project development decision making process and define future park improvements.

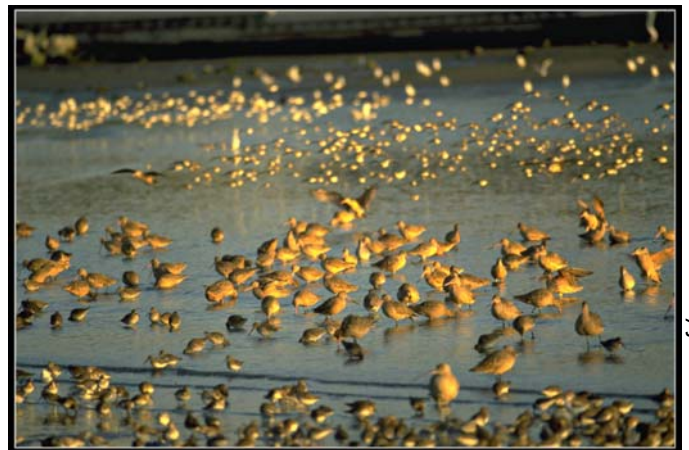
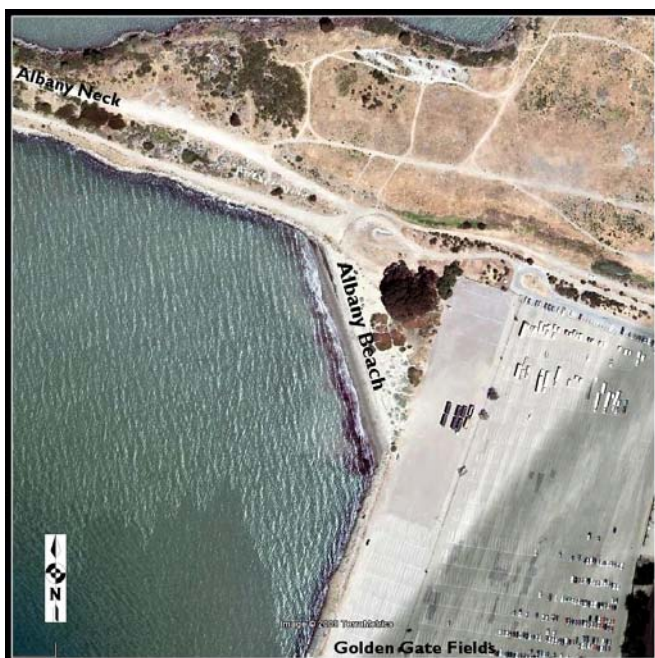


Photo by Joe Didonato

During the feasibility study process there will be opportunities for the public to review and comment on restoration and public access opportunities identified by the Eastshore General Plan.

Funding for the feasibility study is being provided by a State Coastal Conservancy grant and East Bay Regional Park District funds. Additional funds are required for implementation of future improvement projects. Please contact Chris Barton at (510) 544-2627 should you have any questions about the study.