

Del Valle Regional Park

Squirrel Gulch Trail/Ridgeline Trail/Eagle Crest Trail/Ridgeline Trail

Length: 4.7-mile loop **Elevation Gain:** 705 feet

Location: Livermore

GPS: 37.5851473, -121.6997774

Intensity: Moderate

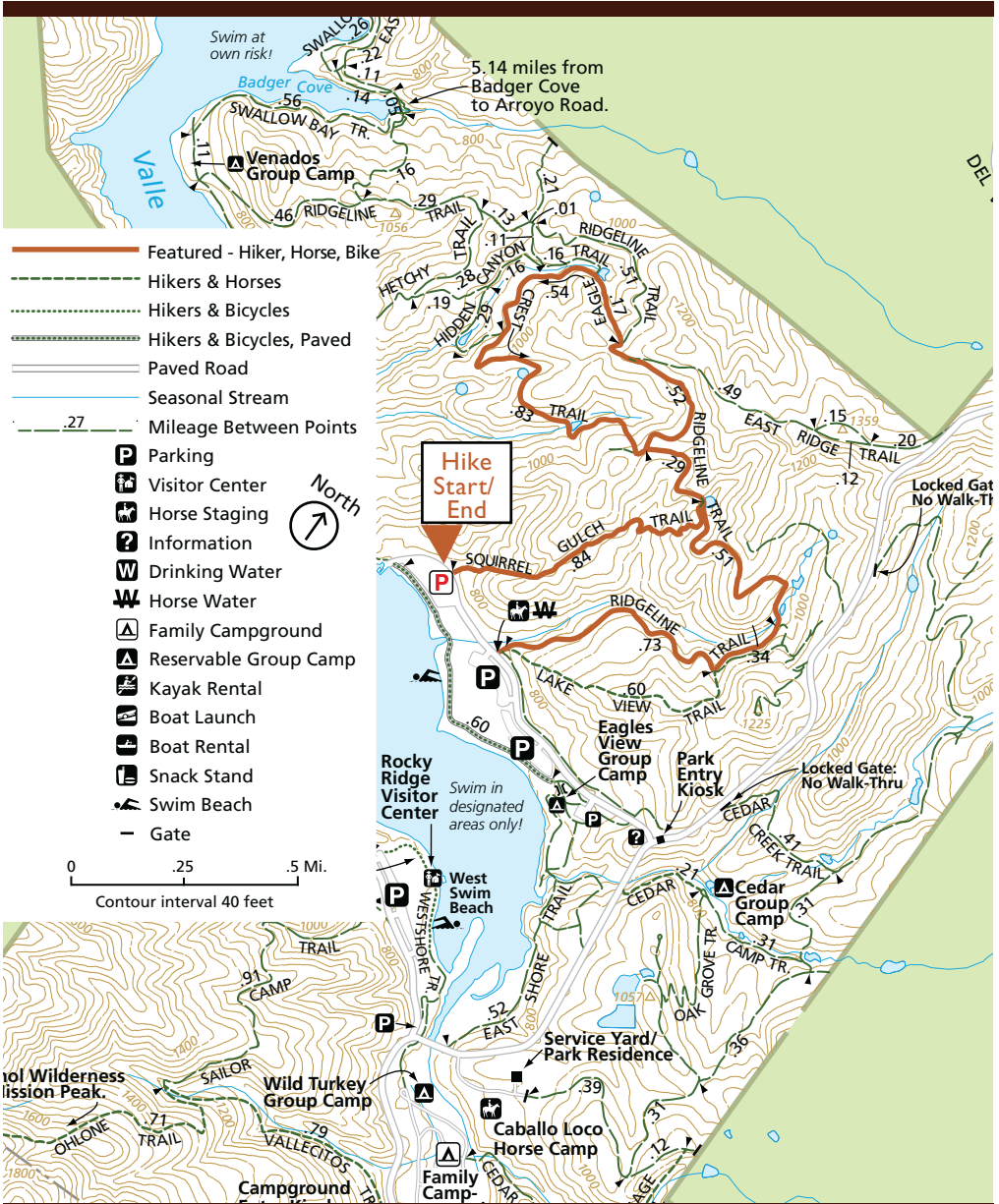


Park Features: Nestled high in the hills, far beyond the vineyards and busy freeways of Livermore, picturesque Del Valle Regional Park offers a diverse range of recreational activities. The centerpiece of the park is a lake five miles long with a variety of water-oriented recreation, ranging from swimming to windsurfing and boating. The surrounding 4,395 acres of beautiful parkland is ideal for hiking, horseback riding, and nature study. The Rocky Ridge Visitor Center on the west side of the lake offers naturalist-led programs, campfires, hikes and boat tours of the lake. The visitor center is open 10:30 a.m. to 5 p.m., weekends Memorial Day through Labor Day.

Trails Highlights: This walk leads up into the hills of Del Valle, the less visited part of the park. It offers glimpses of the long lake below and rugged hills beyond. The hills are an open grazing area so be mindful of the roaming cows. This trail is mostly in the open, so bring a hat, water and sunblock; temperatures commonly reach the 90's in the summer.

Trail Directions: Park near the Marina and boat launch area (turning right just past the entrance kiosk). From the parking lot, head up the hill directly behind the boat inspection station and through the gate to access Squirrel Gulch Trail. Squirrel Gulch will ascend steeply for about .85 miles. At the next trail post, make a left onto Ridgeline Trail, passing through the large gap in the fence posts. When you reach the top of the hill, stay left onto Eagle Crest Trail. This leads down the hill and around a pond. At the next trail post, stay right and continue uphill on Eagle Crest, turning right onto Ridgeline Trail. Shortly, you will come to an unmarked T crossing: Ridgeline curves left, then you immediately come to a Y; take the right fork of this Y to stay onto Ridgeline Trail. In less than a half a mile you will come to the intersection with Squirrel Gulch Trail, but keep going straight on Ridgeline Trail. The trail will drop downhill into a valley. Follow the trail for roughly 1 mile and it will lead all the way back to the Equine parking lot, close to where you started. When you get to the road, the Marina and boat launch areas are off to the right, down through the parking areas.

Driving Directions: The Park is located on Del Valle Rd. off Mines Rd. south of Livermore (parking fee). Exit I-580 eastbound or westbound in Livermore at North Livermore Ave. Head south and proceed through town (North Livermore Ave. will become South Livermore Ave. in town, and then Tesla once out of town). About



1.5 miles outside town, turn right at Mines Rd., go about 3.5 miles and continue straight on Del Valle Rd. (Mines Rd. goes left). The park entrance is about four miles ahead.

Park Hours: Dawn to dusk

Fees: \$6 per vehicle. \$4 per trailered vehicle. \$25 per bus. No parking fee at Arroyo staging area. \$2 per dog. Guide/service dogs free.

Website: ebparks.org/parks/del_valle