

**CONCEPT SUMMARY:**

- Preserve open water lake habitat
- Construct diversion structure to manage sediment and flow
- Modify Jewel Lake to create a bypass channel
- Continual operation and maintenance of diversion structure required for fish passage
- Retain and expand the riparian boardwalk
- Include interpretive opportunities and elements

**COST ESTIMATE:**

**\$ 14.4 - 18.3 m\***

Design & Permitting	\$ 0.7 - 0.8 m
Construction & Administration	\$ 9.1 - 11.5 m
Operating & Maintenance (50-yr)	\$ 4.7 - 6.0 m

**PROJECT GOALS:**

- Enhance native species habitat
- Provide salmonid passage
- Provide sediment continuity
- Maintain level of public access
- Maintain / provide a "destination" for the public
- Maintain lake as open water

+++



++

++

++

+++

+++

 PROPOSED BOARDWALK  
 PROPOSED FOOT TRAILS  
 PROPOSED BRIDGES  
 GRADING LIMIT  
 EXISTING FIRE ROAD  
 EXISTING BOARDWALK  
 EXISTING FOOT TRAIL  
 DECOMMISSIONED FOOT TRAIL

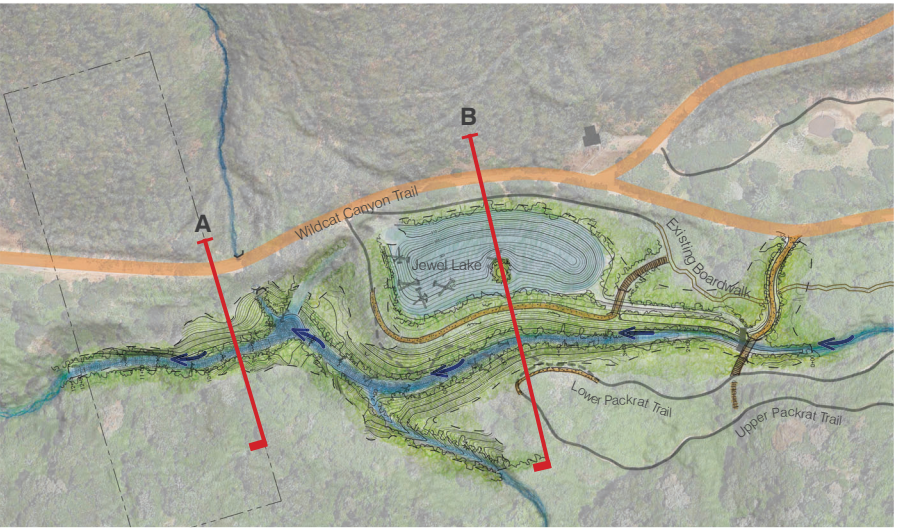
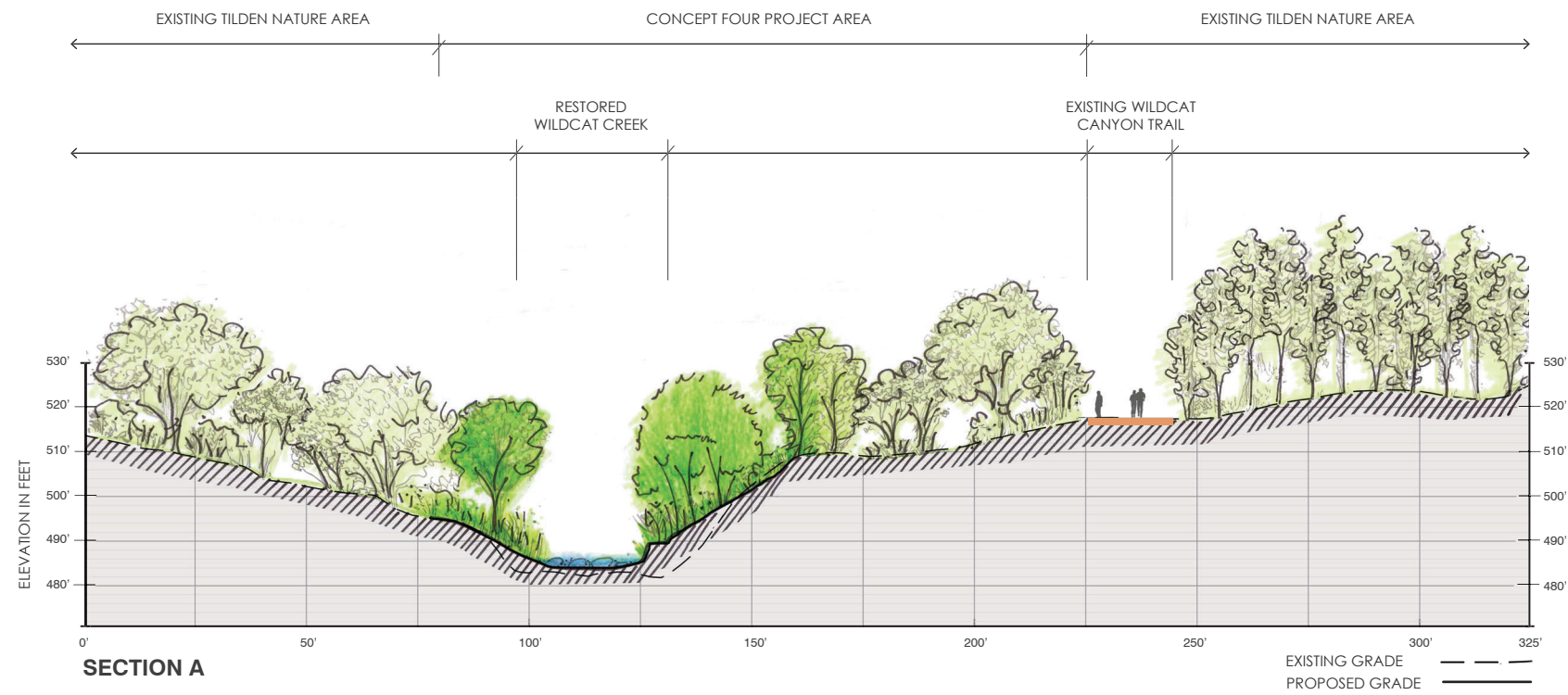
\* Costs for Design and O&M are presented as present day (2021). Costs for construction are escalated to 2026 dollars. Total represents costs over the project's 50 year life cycle.

**CONCEPT 4 | CREATE BYPASS CHANNEL, MODIFY LAKE**

**JEWEL LAKE STUDY RESTORATION & ACCESS FEASIBILITY FOR WILDCAT CREEK'S JEWEL LAKE REACH**

12 APRIL, 2022





KEY PLAN | CONCEPT 4 SECTIONS

