

(A) TYPICAL ELEVATION

NUMBERED PARTS LIST

(1)	CHAIN LINK FABRIC	(13)	TENSION BAR SEE DETAIL 'F' ON SHEET 5
(2)	GATE POST	(14)	TENSION BAND SEE DETAIL 'G' ON SHEET 5
(3)	LINE POST	(15)	POST CAP – GATE, CORNER AND END POSTS
(4)	END OR CORNER POST	(16)	POST LOOP CAP – LINE POSTS
(5)	BOTTOM TENSION WIRE	(17)	HINGE
(6)	TOP TENSION WIRE	(18)	LATCH
(7)	TOP BAR ALTERNATE TO TOP TENSION WIRE	(19)	CONCRETE FOOTING – LINE, END, AND CORNER POSTS
(8)	HORIZONTAL BRACE	(20)	CONCRETE FOOTING – GATE POSTS
(9)	RAIL END CUP AT EACH END OF HORIZONTAL BRACE	(21)	GATE FRAME
(10)	TRUSS ROD	(22)	GATE CUT-OUT SEE DETAIL 'G' ON SHEET 5
(11)	TRUSS ROD TIGHTENER	(23)	TIE WIRES – CONNECT FABRIC TO LINE POSTS AND BRACES AT 14" OC
(12)	BRACE BAND SEE DETAIL 'H' ON SHEET 5	(24)	HOG RINGS OR TIE WIRES – CONNECT FABRIC TO TENSION WIRES AT 18" OC



CHAIN LINK FENCE

REVIEWED BY THE PARK STANDARDS COMMITTEE, AND
APPROVED BY THE CHIEF OF DESIGN & CONSTRUCTION

Signature

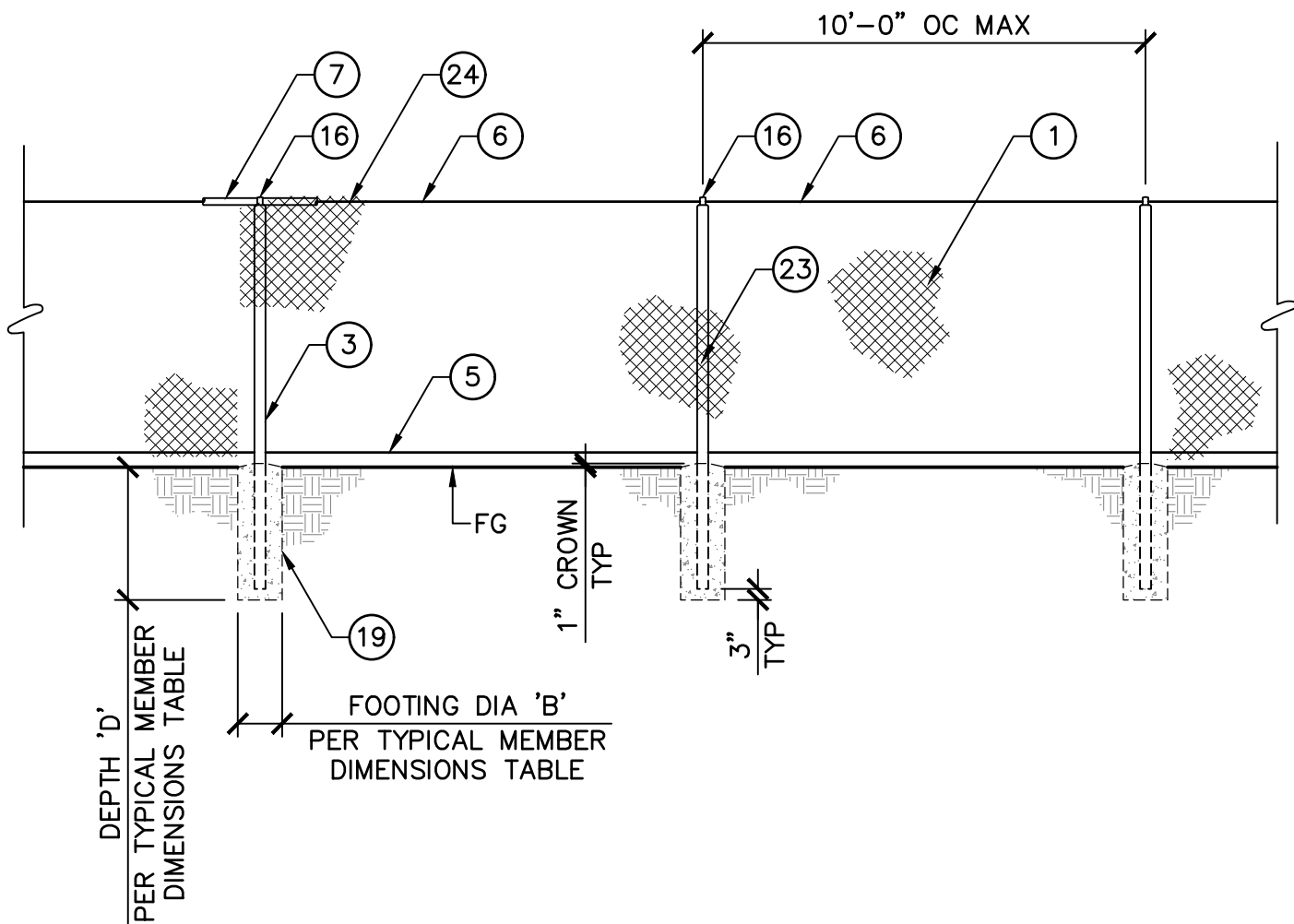
09/23/2022

STD PLAN

215

SHEET 1 OF 7
NOT TO SCALE

EAST BAY REGIONAL PARK DISTRICT - STANDARD PLANS



(B) TYPICAL ELEVATION WITH LINE POSTS

TYPICAL MEMBER DIMENSIONS TABLE

MAXIMUM FENCE HEIGHT	(19) FOOTING		(3) LINE POST			(7) TOP BAR (ALTERNATE)		
	B (IN)	D (FT)	SCH. 40 STEEL PIPE			SCH. 40 STEEL PIPE		
			PIPE OD	NOMINAL PIPE SIZE	WEIGHT (lb/ft)	PIPE OD	NOMINAL PIPE SIZE	WEIGHT (lb/ft)
5'-0"	8"	2'-6"	1.90"	1½"	2.72	1.90"	1½"	2.72
6'-0"	10"	2'-6"	2.38"	2"	3.66	1.90"	1½"	2.72
8'-0"	12"	3'-0"	2.88"	2½"	5.80	2.38"	2"	3.66



CHAIN LINK FENCE

REVIEWED BY THE PARK STANDARDS COMMITTEE, AND APPROVED BY THE CHIEF OF DESIGN & CONSTRUCTION

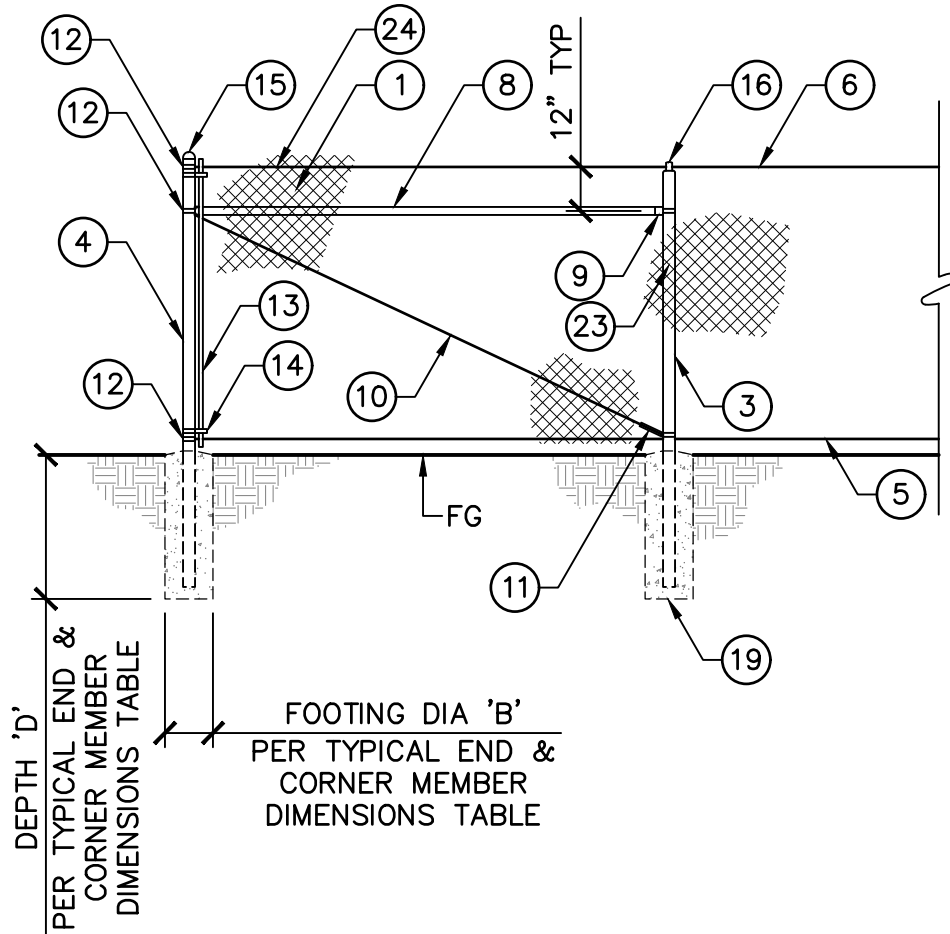
Signature

09/23/2022

STD PLAN

215

SHEET 2 OF 7
NOT TO SCALE



(C) TYP END OR CORNER ELEVATION

TYPICAL END & CORNER MEMBER DIMENSIONS TABLE

MAXIMUM FENCE HEIGHT	(19) FOOTING		(4) END OR CORNER POST			(8) HORIZONTAL BRACE		
	B (IN)	D (FT)	SCH. 40 STEEL PIPE			SCH. 40 STEEL PIPE		
			PIPE OD	NOMINAL PIPE SIZE	WEIGHT (lb/ft)	PIPE OD	NOMINAL PIPE SIZE	WEIGHT (lb/ft)
5'-0"	8"	2'-6"	1.90"	1½"	2.72	1.90"	1½"	2.72
6'-0"	10"	2'-6"	2.38"	2"	3.66	2.38"	2"	3.66
8'-0"	12"	3'-0"	2.88"	2½"	5.80	2.38"	2"	3.66



CHAIN LINK FENCE

REVIEWED BY THE PARK STANDARDS COMMITTEE, AND APPROVED BY THE CHIEF OF DESIGN & CONSTRUCTION

Signature

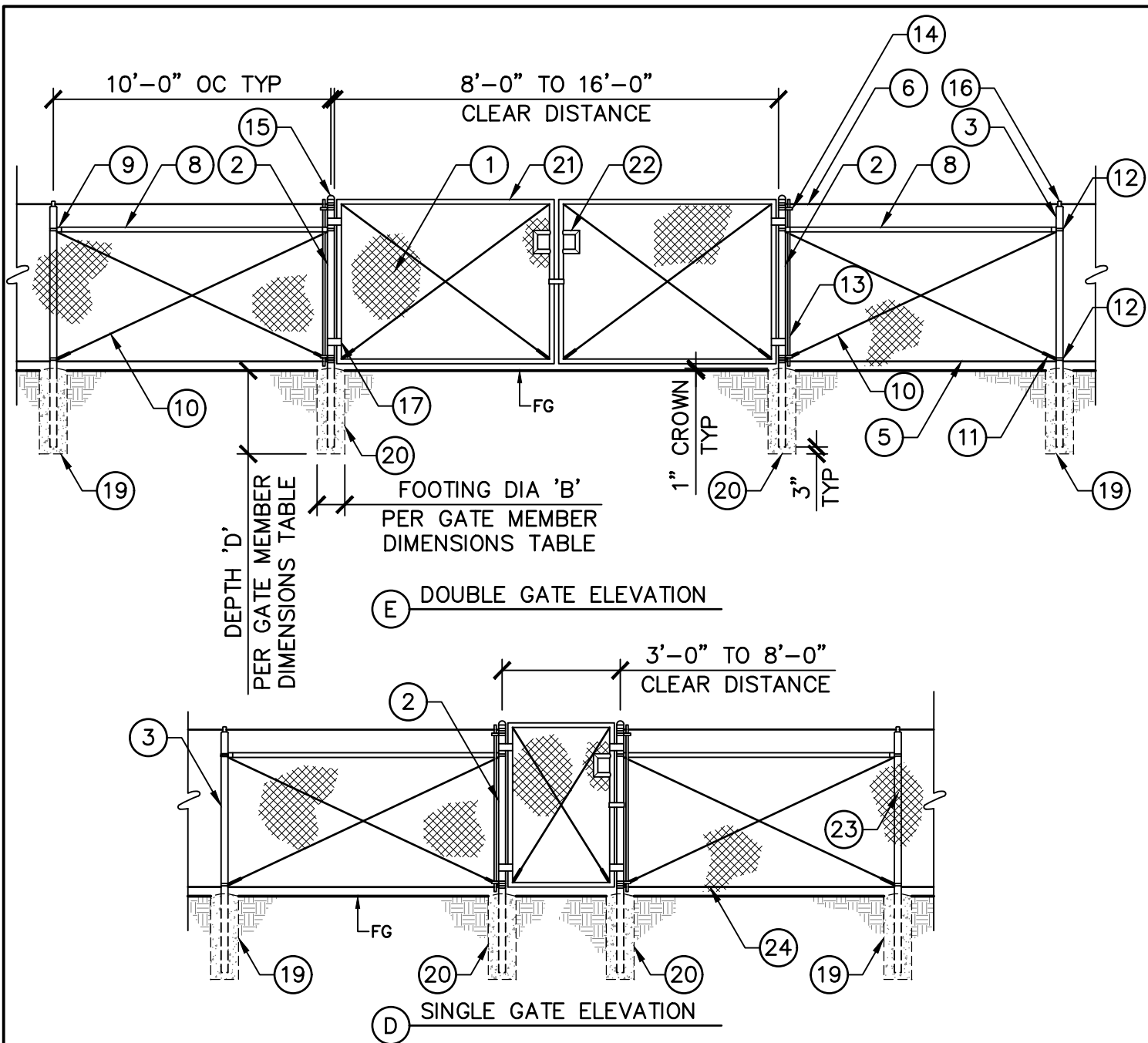
09/23/2022

EAST BAY REGIONAL PARK DISTRICT - STANDARD PLANS

STD PLAN

215

SHEET 3 OF 7
NOT TO SCALE



GATE MEMBER DIMENSIONS TABLE								
MAXIMUM FENCE HEIGHT	(20) FOOTING		(2) GATE POST			(21) GATE FRAME		
	B (IN)	D (FT)	SCH. 40 STEEL PIPE			SCH. 40 STEEL PIPE		
			PIPE OD	NOMINAL PIPE SIZE	WEIGHT (lb/ft)	PIPE OD	NOMINAL PIPE SIZE	WEIGHT (lb/ft)
5'-0"	12"	2'-6"	3.50"	3"	7.58	1.90"	1½"	2.72
6'-0"	12"	2'-6"	3.50"	3"	7.58	1.90"	1½"	2.72
8'-0"	12"	3'-0"	3.50"	3"	7.58	1.90"	1½"	2.72



CHAIN LINK FENCE

REVIEWED BY THE PARK STANDARDS COMMITTEE, AND APPROVED BY THE CHIEF OF DESIGN & CONSTRUCTION

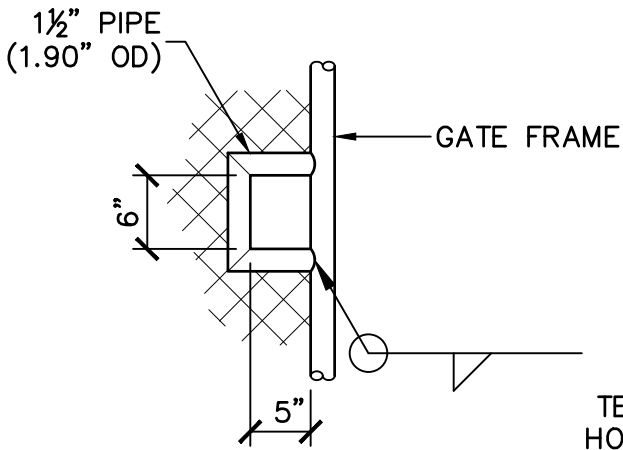
E. G. G.

09/23/2022

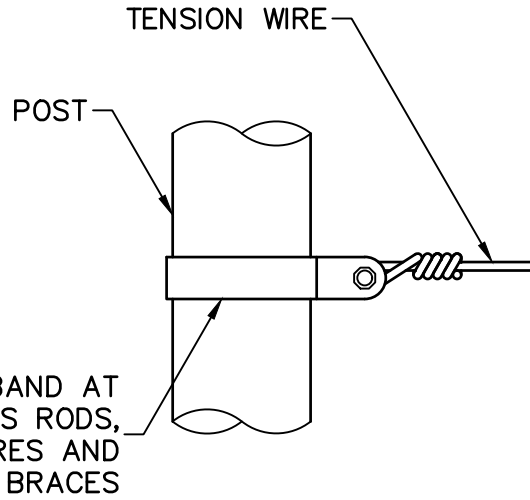
STD PLAN

215

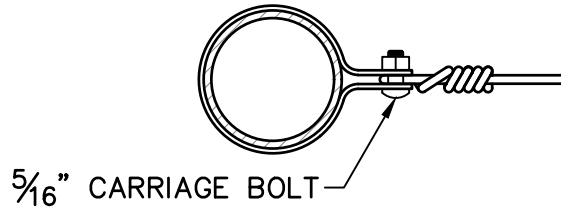
SHEET 4 OF 7
NOT TO SCALE



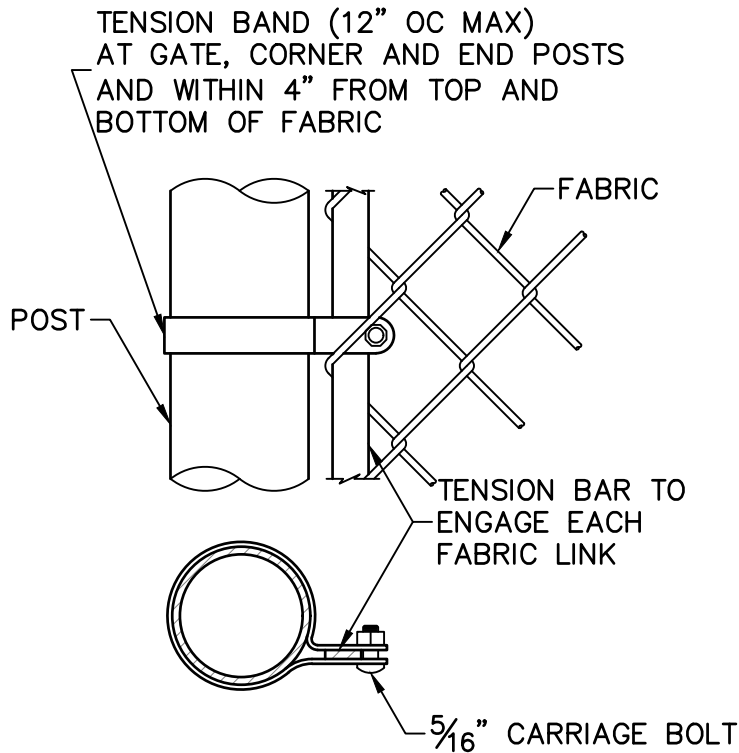
G GATE CUT-OUT DETAIL



H BRACE BAND DETAIL



F TENSION BAR DETAIL



NOTES

1. THE FLAT SIDE OF THE TENSION BAND FACES 'OUT', THE SAME SIDE AS THE CHAIN LINK FABRIC WILL BE INSTALLED. THIS IS NORMALLY THE OUTSIDE OF THE ENCLOSED AREA.
2. TENSION BARS (FOR END AND CORNER POSTS) SHALL BE HOT-DIP GALVANIZED STEEL BARS IN ONE-PIECE LENGTHS EQUAL TO FULL HEIGHT OF FABRIC, WITH A MINIMUM CROSS-SECTION 1/4" X 3/4". SECURE BARS TO POSTS WITH TENSION BANDS SPACED NOT OVER 12".



CHAIN LINK FENCE

REVIEWED BY THE PARK STANDARDS COMMITTEE, AND APPROVED BY THE CHIEF OF DESIGN & CONSTRUCTION

Signature

09/23/2022

STD PLAN

215

SHEET **5** OF **7**
NOT TO SCALE

MATERIALS

1. GALVANIZED FENCE

- 1.1. ZINC-COAT (HOT-DIP GALVANIZE) ALL FERROUS COMPONENTS AND ACCESSORIES AFTER FABRICATION PER ASTM A53, A123, OR A153, AS APPROPRIATE.
 - 1.1.1. FENCE FABRIC: 9-GAUGE STEEL CORE, 2.0 MINIMUM OUNCES PER SQUARE FOOT, GALVANIZED BEFORE WEAVING, WITH NO ADDITIONAL FINISH COATING.
 - 1.1.2. TENSION WIRES (7-GAUGE COIL SPRING STEEL)
 - 1.1.3. TIE WIRES (9-GAUGE STEEL)
 - 1.1.4. HOG RINGS (9-GAUGE STEEL)
 - 1.1.5. POSTS AND ALL OTHER COMPONENTS: 1.8 MINIMUM OUNCES PER SQUARE FOOT

2. VINYL COATED FENCE

- 2.1. WHERE A VINYL COATING IS SPECIFIED, THE FOLLOWING ITEMS SHALL BE COATED WITH BLACK POLYVINYL CHLORIDE (PVC) PER ASTM F668, CLASS 2B. THE STEEL CORE WIRE SHALL BE GALVANIZED IN ACCORDANCE WITH ASTM A641.
 - 2.1.1. FENCE FABRIC (11-GAUGE STEEL CORE) TO FINISH GAUGE NO. 8.
 - 2.1.2. TENSIONS WIRES (7-GAUGE COIL SPRING STEEL) TO FINISH GAUGE NO. 6.
 - 2.1.3. TIE WIRES TO FINISH GAUGE NO. 9.
 - 2.1.4. HOG RINGS TO FINISH GAUGE NO. 9.
 - 2.1.5. ALL OTHER FENCE COMPONENTS AND ACCESSORIES SHALL BE CLEANED WITH A 10% SOLUTION OF PHOSPHORIC ACID METAL ETCH, PRIMED WITH DUNN #3172 "UNI-PRIME ACRYLIC PRIMER AND FINISH" OR EQUAL, AND PAINTED WITH TWO COATS BLACK, EXTERIOR ENAMEL PAINT. PAINT FOR THE FIRST APPLICATION SHALL BE TINTED WITH A COMPATIBLE COLORING AGENT TO SLIGHTLY CONTRAST WITH THE COLOR OF THE SECOND APPLICATION. SUBMIT SAMPLE OF PAINT TO DISTRICT FOR APPROVAL BEFORE APPLICATION.

3. FABRIC MESH

- 3.1. KNUCKLED FINISH TOP AND BOTTOM EDGES.
- 3.2. STANDARD FENCE FABRIC TO BE WOVEN INTO 2" MESH, SUCH THAT IN A VERTICAL DIMENSION OF 23", ALONG THE DIAGONALS OF THE OPENINGS, THERE SHALL BE AT LEAST 7 MESHES.
- 3.3. NO-CLIMB FENCE FABRIC, WHERE SPECIFIED, TO BE WOVEN INTO 1¼" MAXIMUM MESH.

- 4. TENSION WIRES TO BE "SPIRAL" OR "MARCELLED" AND SLIGHTLY KINKED TO MAINTAIN TENSION ONCE INSTALLED.
- 5. WEATHER-TIGHT CLOSURE POSTS CAPS, TRUSS ROD TIGHTENERS, BAR BANDS AND OTHER REQUIRED FITTINGS AND HARDWARE SHALL BE STEEL OR MALLEABLE IRON OR WROUGHT IRON.
- 6. HEAVY DUTY TENSION BANDS AND BRACE BANDS TO BE 11-GAUGE MINIMUM.
- 7. TRUSS ROD MUST BE STEEL AND HAVE A DIAMETER OF AT LEAST 3/8". CONNECT TO FENCE FRAMING WITH BRACE BAND, WELD OR EQUAL.
- 8. CONCRETE FOOTINGS
 - 8.1. CONCRETE SHALL BE COMMERCIAL 5-SACK PRE-MIX CONCRETE OR EQUIVALENT.



CHAIN LINK FENCE

REVIEWED BY THE PARK STANDARDS COMMITTEE, AND APPROVED BY THE CHIEF OF DESIGN & CONSTRUCTION

09/23/2022

EAST BAY REGIONAL PARK DISTRICT - STANDARD PLANS

STD PLAN

215

SHEET **6** OF **7**
NOT TO SCALE

WORKMANSHIP

1. LOCATE UNDERGROUND UTILITIES PRIOR TO DIGGING, CALL USA (UNDERGROUND SERVICE ALERT) 1-800-277-2600, MON THRU FRI 6AM TO 7PM, A MINIMUM 2 WORKING DAYS WITH A MAXIMUM 14 CALENDAR DAYS, TO OBTAIN A TICKET. CONTACT THE DISTRICT INSPECTOR OR PARK SUPERVISOR FOR DISTRICT UTILITIES NOT LOCATED BY USA.
2. FENCE SHALL BE INSTALLED TO LINE, GRADE AND AT THE TOP OF SLOPE, OR AS DIRECTED BY DISTRICT REPRESENTATIVE.
3. LOCATE FOUNDATIONS ACCURATELY TO ALIGNMENT AND GRADE. EXCAVATED MATERIAL SHALL BE SPREAD IN A UNIFORM MANNER ALONG THE FENCE LINE. PLACE CONCRETE AROUND POSTS IN A CONTINUOUS POUR AND ROD CONCRETE TO ELIMINATE VOIDS. MAKE POSTS PLUMB AND TRUE WITH A VERTICAL TOLERANCE OF 3" AND HOLD IN POSITION DURING PLACEMENT AND FINISHING OF CONCRETE. EXTEND FOUNDATIONS TO 1" ABOVE GRADE. SLOPE THE TOP TO SHED WATER AWAY FROM THE POSTS AND FINISH TROWEL THE EXPOSED SURFACES. KEEP EXPOSED CONCRETE MOIST AND LET SET FOR AT LEAST 72 HOURS AFTER PLACEMENT.
4. DO NOT INSTALL FABRIC OR TENSION WIRES UNTIL CONCRETE HAS SET FOR 72 HOURS.
5. VERTICAL AND HORIZONTAL ANGLE POINTS IN THE FENCE ALIGNMENT, WHERE THE ANGLE OF DEFLECTION IS 30 DEGREES OR MORE, SHALL BE CONSIDERED AS CORNERS AND CORNER POSTS SHALL BE INSTALLED.
6. INSTALL TENSION WIRES 2" MAXIMUM FROM EDGE OF FABRIC. INSTALL TENSION WIRES BEFORE STRETCHING FABRIC.



CHAIN LINK FENCE

REVIEWED BY THE PARK STANDARDS COMMITTEE, AND
APPROVED BY THE CHIEF OF DESIGN & CONSTRUCTION

09/23/2022

STD PLAN

215

SHEET 7 OF 7
NOT TO SCALE

EAST BAY REGIONAL PARK DISTRICT - STANDARD PLANS