

## Leveraging Our Resources

In 2013, the Park District added more than 800 acres of open space and parklands to our Regional Parks system, protecting significant biologic, recreational, scenic, and historic resources.

In 2008, East Bay voters approved Measure WW, an extension of the 1988 Bond Measure AA; in 2013, \$2.3 million from these measures, along with \$1.3 million in grants, was used to purchase lands valued at more than \$4.4 million.

Some of the notable land acquisitions and options include:

- Adding future recreational access to the Delta with excellent water frontage, 90 acres east of Brentwood represents the Park District's long-term investment in the Delta.
- The 58-acre Gillrie property in the Castro Valley area is a critical link in the Bay Area Ridge Trail between Chabot Regional Park and Garin Regional Park.
- In Richmond, 362 acres on the eastern

edge of Wildcat Canyon Regional Park will protect the hillside from further development and provide public access opportunities from San Pablo Dam Road.

- About 165 acres on Castro Ranch Road in the El Sobrante area of unincorporated Contra Costa County will help to link Sobrante Ridge Regional Preserve to Kennedy Grove Regional Park as part of the Bay Area Ridge Trail.

A 231-acre Castleridge property to expand Pleasanton Ridge Regional Park; the 1,885 acre Roddy Ranch in Eastern Contra Costa

County for a new regional park in Deer Valley; and 79 acres north of Livermore known as "Eddie's Flat" adjacent to the western boundary of Brushy Peak Regional Preserve are expected to close in 2014.

A special acknowledgement goes to these grant funders: City of Livermore Dougherty Valley Settlement Agreement Fund; Alameda County Altamont Landfill and Resource Open Space Advisory Council; East Contra Costa Habitat Conservation Plan; San Francisco Bay Area Conservancy Program (Coastal Conservancy); and California State Lands Commission.



East Bay Regional Park District Annual Community Report

## Community Connections

### Community Connections

#### Engaging Our Communities

- More than 14,198 volunteers donated more than 120,159 hours of service.
- We hosted roundtable events for Korean-American and Hispanic community leaders.
- Hosted the annual Multi-Cultural Trail Maintenance Day in XX\_\_ Park.
- Nearly 20,000 visitors came to the new Big Break Visitor Center at the Delta, which is also used as a community meeting place.
- Kids Healthy Outdoors Challenge piloted with 33 third-grade classrooms and began a second year of the program.
- Mayors' Councils in Contra Costa and Alameda cities encouraged healthy outdoor activity in the Mayors' Trails Challenge.

#### Healthy Parks Healthy People

- We enrolled 6,721 people in the signature trails challenge program, which also celebrated its 20th anniversary.
- Joined with other Bay Area agencies to launch monthly Healthy Parks Healthy People Bay Area hikes.
- Third annual Healthy Parks Healthy People Festival was held at Quarry Lakes with 4,000 attendees from various cultural backgrounds.
- Dedicated the first fitness circuit at Lake Chabot
- The Kids Healthy Outdoors Challenge (KHOC) introduced children in some 33 third-grade classrooms to healthy outdoor activities in parks, and helped teachers meet curriculum standards.

#### Keeping Your Parks Safe

- Our lifeguards ended the 2013 season with zero drowning deaths.
- East Bay Parks Police responded to over 5,788 incidents, and worked diligently to solve outstanding cases, including a cold case murder investigation from 19XX.
- Our fire and police dispatchers handled over 7,303 calls for service.

#### Protecting Peaks to Shorelines

- Crown Beach sand replacement project completed by the Park District to place more than 82,000 cubic yards of sand, mined from San Francisco Bay and pumped from offshore barges onto Crown Memorial State Beach. This project restored many years of erosion, protecting the recreational beach and nearby Alameda streets.
- Mission Peak park rangers have been working with students and other volunteer groups to restore trails, prevent erosion and remove graffiti in this increasingly popular park.
- Tilden Golf Course was certified by Audubon International as a Certified Audubon Cooperative Sanctuary for best environmental management practices.

#### Green Transportation Funding

Thanks to the efforts of our officials elected to the U.S. Senate and Congress, the Park District secured a \$10 million federal TIGER grant, awarded in 2010.

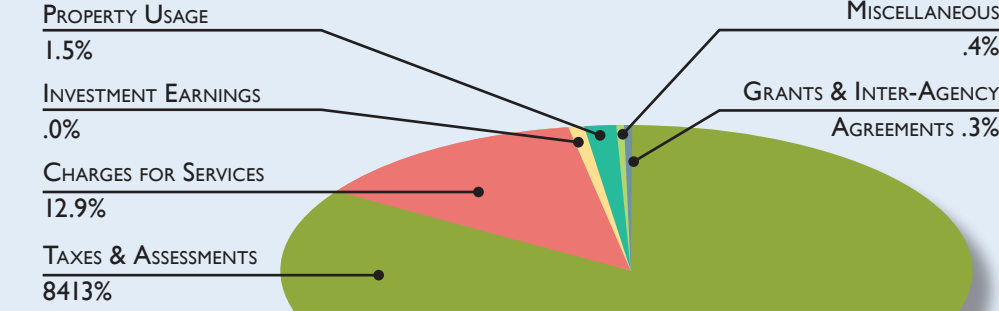
One of only 42 such grants awarded throughout the country, the Transportation Investment Generating Economic Recovery grant from the U.S. Dept. of Transportation enables us to close several gaps in nearly 200 miles of paved bicycle and pedestrian trails. These projects underway or completed in 2013 are:

- Dublin/Pleasanton BART to Santa Rita Road, Iron Horse Trail, to be completed early 2014.
- Carquinez Scenic Drive to become the Martinez Intermodal to Crockett segment of the San Francisco Bay Trail, to be completed in 2014
- Oakland Coliseum BART to 85th Avenue, East Bay Greenway groundbreaking, a joint project with the Alameda County Transportation Commission.

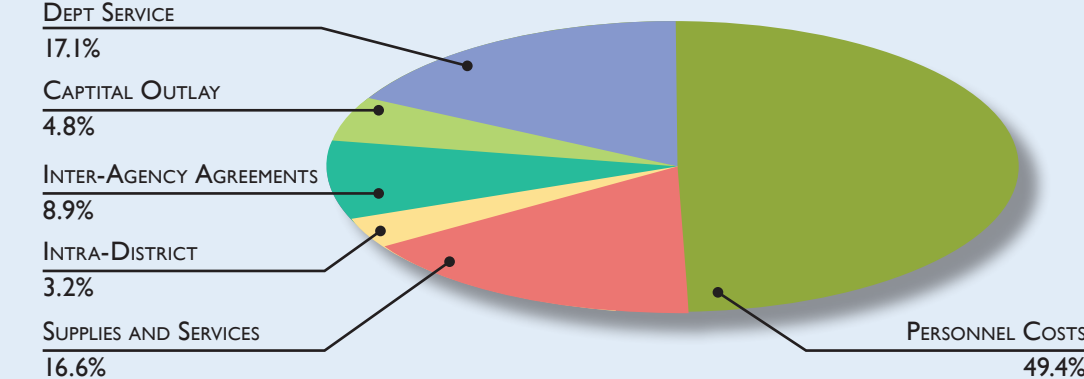
## District Budget

The East Bay Regional Park District's 2014 budget from all funds totals \$191.8 million and is balanced. Approximately 84.3% of revenue is generated from property taxes and assessments levied in both Alameda and Contra Costa Counties; The largest expenditure category is personnel costs at 49.4%. View the entire budget at [www.ebparks.org/about/budget](http://www.ebparks.org/about/budget).

### 2014 Revenue by Type



### 2014 Use of Funds



## Board of Directors 2014

Left to right: Ayn Wieskamp, President, Ward 5; Whitney Dotson, Vice President Ward 1; Carol Severin, Ward 3; John Sutter, Ward 2; Beverly Lane, Ward 6; Robert E. Doyle, General Manager; Ted Radke, Treasurer, Ward 7; Doug Siden, Secretary, Ward 4



East Bay  
Regional Park District

2950 Peralta Oaks Court  
P.O. Box 5381  
Oakland, CA 94605-0381  
T: 1-888-EBPARKS  
F: 510-569-4319  
TDD: 510-633-0460  
[www.ebparks.org](http://www.ebparks.org)

## District Profile

- Founded in 1934
- 114,000 acres
- 10 lakes
- 739 employees
- 25 million visits per year
- 65 Regional Parks
- 1,200 miles of trails
- 40 miles of accessible shoreline
- 10 Visitor Centers
- 2014 budget: \$191.8 million

Healthy Parks  
Healthy People



## Connecting Parks to People

Community Report – A look back at 2013; a look ahead to 2014

[www.ebparks.org](http://www.ebparks.org)

East Bay  
Regional Park District



# A Message from Robert E. Doyle, General Manager



The East Bay Regional Park District has been enriching the surrounding cities and the lives of their inhabitants since 1934, and we are celebrating 80 years in 2014 with a number of projects and events that will be featured on our web site and publications.

Our Park District founders were men and women of great foresight. But if they could see their creation today, they would likely be astonished and delighted at its growth and development. I am pleased to report to a number of significant milestones achieved in 2013, and our vision for 2014.

The State of California officially renamed McLaughlin Eastshore State Park in honor of Sylvia McLaughlin, who was influential over four decades in many grassroots ecological efforts to safeguard the San Francisco Bay region. Sylvia herself attended the rededication event in Berkeley, where a new park entrance sign was unveiled in November 2013. The East Bay Regional Park District manages Eastshore and several other State parks in our two counties.

Most significant is the 2013 Master Plan update, approved by our East Bay Regional Park District Board of Directors in July. The Board's approval was the last step in a lengthy public process to update the policy document that guides the District in future expansion of parks, trails, and services. The final, Board-approved 2013 Master Plan is on our web site.

Our hardworking Board and staff are dedicated to our mission, and work tirelessly to provide, maintain, and increase access to our open space parks, connecting parks to people every day. This theme guides our work and helps to keep focused on our vision for 2014 and for years to come.

Robert Doyle has served over 35 years in the parks and open space field, beginning as a park ranger with the Park District.

## 2014 Goals and Priorities

• Nisitate mpelece pudaessitam, alibusam, ut aut volorep elianisiti consequis sit, quo que nonsequo cullam auta pre ad etur?

Bus, idempelestia dipienisi dendis mintio videllor ad enectiorror as apientiis quiducid eos moluptatet od quam inimaxim acerum illabo. Ut eario. Et andusci nonet reresit lab ipsunt facerro ent, am et aut repedit, quo te pra quosandae re, si nat laborit, con et ut arioritem de pa nonse non cusandent alitemo luptati antur? Quibus volendit, non consenissita ad qui ut qui invenis ea prestotatur se ius volendendunt harum is parcillauda am invel mollaccum sitatem. Et doloriam, verum in ne volupta qui que nulparum accaborese et mo con pa dem nonsed molupta tisiatio vendelitem ilit maximpo ratemqui corepel endererrum quam ium consequi blam qui occum diorehenis exeruntis evenienim acestius exerumq uibusame quo offic to intis enitibus, sition excepter



## Measure CC

### Measure CC

In 2004, voters approved Measure CC, a 15-year special tax which provided funds for fire hazard mitigation within a special "Zone 1" in the East Bay Hills. Measure CC is a parcel tax for Park Access, Wildfire Protection, Public Safety and Environmental Maintenance. About 20% of the CC revenues are designated for wildfire protection; the other 80% is for protecting and expanding public access, public safety, resource protection, and habitat restoration.

In Alameda County, Zone 1 boundaries include the incorporated cities of Alameda, Albany, Berkeley, Emeryville, Oakland, and Piedmont, as well as some unincorporated areas. In Contra Costa County, Zone 1 boundaries include the incorporated cities of Richmond, San Pablo, and El Cerrito and a portion of incorporated Pinole, as well as unincorporated areas of El Sobrante and Kensington. All revenue collected through this tax in Zone 1 must be spent in Zone 1.



**Point Isabel Regional Shoreline**  
Richmond, CA

## Regional Parks Foundation

This non-profit agency plays a major role in connecting parks to people, and is dedicated to raising private and corporate funds in support of the East Bay Regional Park District.

A top Foundation priority is to assist underserved populations in getting access to the parks, trails, programs and services.

The Parks Express bus transportation service, funded mainly by the Foundation, is a critical link for most of these groups. The Foundation's campership program helps thousands of kids to attend summer day camp, take swim lessons, become a junior lifeguard, or enjoy a week at Camp Arroyo, an outdoor environmental education camp in Livermore. The total number of children and disabled adults served in 2013 was 4,146.

The Foundation funded these significant capital improvements in the Regional Parks:

- Serpentine prairie restoration at Redwood Regional Park
- First new fitness zone at Lake Chabot

The Foundation also manages a Regional Parks membership program with over 7,000 members who can receive free parking, free swimming, discounts and more benefits.

In 2014 the Foundation will continue to work with the Park District on a campaign for capital improvements and program enhancements that support the visitor experience, volunteer engagement and educational opportunities.

To support or participate in the Regional Parks Foundation, or to purchase a Regional Parks membership, please call 510-544-2202.



**Serpentine Prairie Restoration, Redwood Regional Park**



**Fitness Zone, Lake Chabot Regional Park**



**A Regional Parks Membership Card**

## Community Projects



**The East Oakland Sports Center**

### Funded with Measure WW During 2013

The Park District's \$500 million Measure WW bond extension approved by voters in 2008 included \$125 million (25%) allocated to cities, special park and recreation districts, county service areas, and the Oakland Zoo for local parks and recreation projects to be selected by those various organizations. A total of 19 community projects totaling nearly \$15.5 million were funded in 2013, including:

- Brentwood . . . King Park Dog Area Expansion
- Brentwood . . . Veterans Park Universal Abilities Playground
- Brentwood . . . Veterans Park Bocce Court Expansion
- Brentwood . . . . . Sunset Commons
- Concord . . . . . Refurbish/Upgrade Camp Concord Family Bathhouse
- Concord . . . . . Replace Irrigation Main Line, Valves and Controller at Sun Terrace Park
- Concord . . . . . Meadow Homes Spray Park & Restroom Replacement
- Danville . . . . . Veterans Memorial Building
- Fremont . . . . . Citywide Play Area Upgrades
- Fremont . . . . . Tiny Tots Play Area Upgrades
- Hayward Area Recreation & Park District . . . . . San Lorenzo Community Park ADA Restroom
- Moraga . . . . . Moraga Commons Park Improvements
- Moraga . . . . . Pavilion Restroom Renovation
- Oakland . . . . . East Oakland Sports Center
- Oakland Zoo . . . . . Elephant Barn Addition
- Pinole . . . . . Pinole Valley Park Soccer Field Renovation
- Pleasant Hill Recreation & Park District . . . . . Teen Center
- Richmond . . . . . Burg Park Restoration
- San Ramon . . . . . Athan Downs Playground Renovation