

## Improving Parks, Public Access and Amenities

Thanks to voter-approved Measures CC and WW, along with the District's general fund and other leveraged resources, we have over 500 projects in progress, including 4.5 million square feet of trails, road paving and habitat that require construction, upgrades, repairs, maintenance and/or restoration. Projects completed, or near completion, in 2016 include:

### ALAMEDA/OAKLAND/BERKELEY AREA

- Crown Memorial State Beach: Restored native wetland habitat. Protected shoreline and nesting clapper rail shorebirds. Completed studies to improve access at Encinal Beach.
- Huckleberry Botanic Regional Preserve: Constructed new picnic area and restroom, and upgraded public access. (Measure CC)
- Martin Luther King Jr. Regional Shoreline: Renovated Doolittle Drive boat launch facilities. (Measure CC)
- McLaughlin Eastshore State Park: Completed Albany Beach habitat restoration and public access improvements. Completed grading at the Brickyard to prepare land for park development.
- Roberts Regional Recreation Area: Restored ballfield, irrigation and drainage. (Measure CC)
- Sibley Volcanic Regional Preserve: Installed parking area and restroom. Opened new McCosker access on Pinehurst Road in Canyon. (Measures CC and WW)
- Tilden Regional Park: Completed studies to restore ponds at Tilden Nature Area for endangered species protection and educational enhancement. (Measures CC and WW)

- Ridgeline Parklands: Continued fuels management by maintaining over 1,050 acres utilizing youth crews, contractors, goats and prescribed burns. (Measure CC)

### RICHMOND AREA

- Miller/Knox Regional Shoreline: Constructed new picnic sites, restrooms and walking paths, and renovated irrigation system. (Measure CC). Developed connection to SF Bay Water Trail at Ferry Point.
- Point Isabel Regional Shoreline: Repaired and improved paved trails.
- Point Pinole Regional Shoreline: Constructed \$10 million Atlas Road Bridge which provides a new main entrance and staging area. Completed \$14 million wetland restoration and public access at the Dotson Family Marsh (formerly Breuner). (Measures CC and WW)



## Leading the Way with Climate Resiliency and Stewardship

As a natural green agency, the District is a leader in advancing climate change strategies to improve our air quality, reduce toxic blue-green algae in our lakes, and protect our shorelines against coastal erosion and flooding. Last year, our General Manager received recognition at the White House Water Summit for the District's efforts in drought recovery and water efficiency. Other ways we protected the environment include:

- Permanently closing the Chabot Gun Club at Anthony Chabot Regional Park to comply with stricter environmental regulations and to mitigate lead contamination at the site.
- Installed a 1.2 megawatt solar panel-carport system at Shadow Cliffs Regional Recreation Area to offset electricity use throughout the District – along with three electric-car charging stations, a new recycled water line, and native tree plantings.

- Wildcat Canyon Regional Park: Reduced erosion along Wildcat Creek.

### FREMONT AREA

- Coyote Hills Regional Park: Continued construction of new \$15 million shoreline campground at foot of Dumbarton Bridge, paid for by private funding.
- Mission Peak Regional Preserve: Completed certified three-year EIR process. Approved parking expansion. Worked with City of Fremont on residential parking permit program to provide traffic relief.

### CASTRO VALLEY/PLEASANTON/DUBLIN/LIVERMORE AREA

- Pleasanton Ridge Regional Park: Approved new Castleridge park access near Pleasanton Adobe property.
- Redwood Canyon Golf Course: Selected new course operator, Touchstone Golf. Completed major repairs to clubhouse, restaurant, water system, greens and practice tees.

### Contra Costa County

- Repaved 16 miles of Iron Horse Regional Trail.
- Danville: Received transfer of 20-acre Borel property at Camino Ramon and Fostoria.

The East Bay Regional Park District's 2017 budget is balanced, including the use of fund balance. Appropriations from all funds total \$193.8 million, including a \$124.5 million General Fund operating budget. To view the 2017 budget documents, visit [ebparks.org/about/budget](http://ebparks.org/about/budget).

Debt Service: 7.7%

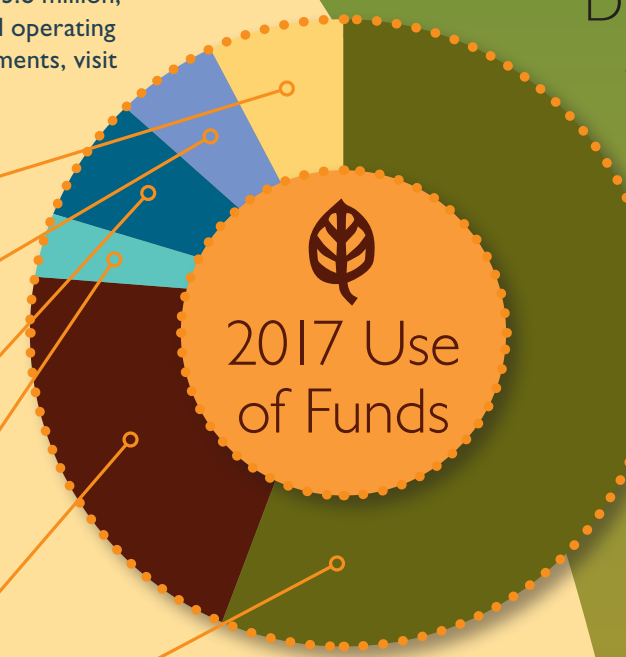
Capital Outlay: 5.7%

Inter-agency Agreements: 8.3%

Intra-District: 3.3%

Supplies and Services: 20.6%

Personnel Costs: 55.7%



## District Profile

- Founded in 1934
- 65 parks
- 120,931 acres
- 1,250 miles of trails
- 50 acres of protected shoreline
- 25 million visits annually
- Serving 2.7 million residents in Alameda and Contra Costa counties
- \$193.8 million annual budget



Park'n It Day Camp  
Temescal Regional  
Recreation Area, Oakland



## Regional Parks Foundation

In 2016, the Regional Parks Foundation, a non-profit organization, provided funds for about 9,000 low-income children to attend camp or receive swim lessons – an increase of more than 120 percent from 2015. The success was due to a significant increase in membership (which now stands close to 10,000) as well as a jump in donations and grants. The Foundation received more than \$2 million in 2016. The Foundation has broken its fundraising records every year for the past six years.



2950 Peralta Oaks Court  
P.O. Box 5381  
Oakland, CA 94605-0381  
T: 1-888-EBPARKS  
F: 510-569-4319  
[ebparks.org](http://ebparks.org)

Coyote Hills Regional  
Park, Fremont

# COMMUNITY REPORT 2016 – 2017

## Transitions and Progress



## A New Era for the Regional Parks

A MESSAGE FROM GENERAL MANAGER ROBERT E. DOYLE



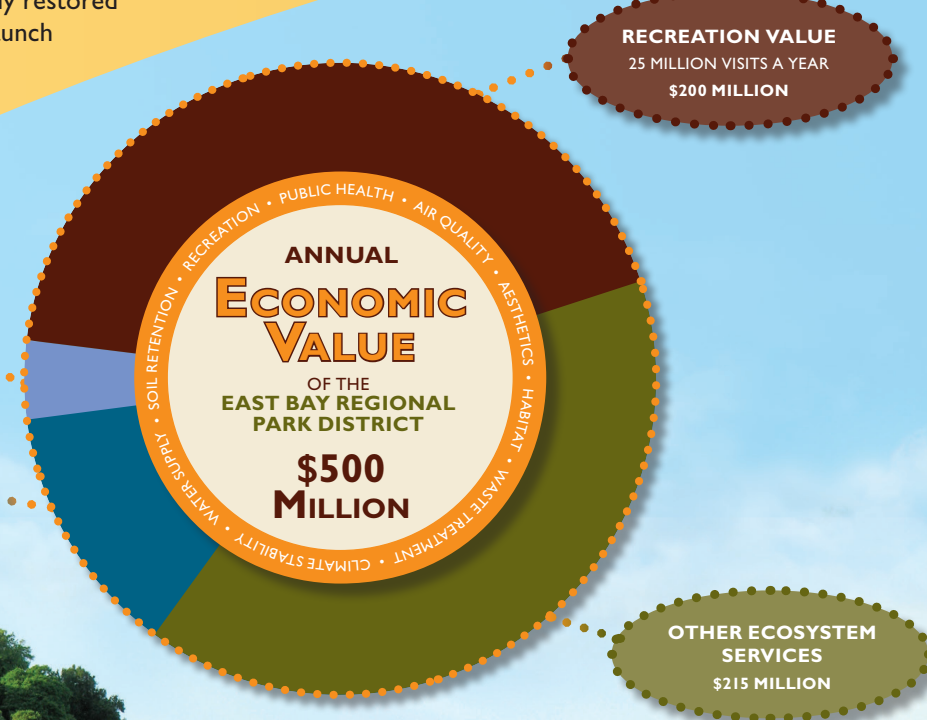
2016 was a year of significant change and transition at the East Bay Regional Park District. Two esteemed Board members, Doug Siden and John Sutter, retired after a combined 44 years of service. Dr. Ana Alvarez joined us as the Deputy General Manager to lead and integrate the District in park planning, strategic adaptation and climate resiliency. We now manage over 120,000 acres and 1,250 miles of trails, with 25 million park visits annually. We continue to apply new solutions to perennial issues, promoting social, health and environmental equity in our programs and practices. In fact, we provide a range of benefits to the East Bay totaling \$500 million annually.

Thanks to your generous support and advocacy, we are leading the way in environmental protection, and global movements such as Healthy Parks Healthy People and Park Prescriptions. Get fit outdoors and let us know your experience. We'd love to hear from you.

## Celebrating Milestones

The District celebrated several milestones in 2016 including:

The 100th anniversary of the National Park Service (NPS) with a co-hosted commemoration of Port Chicago at Concord Hills; the future Concord Hills Regional Park and Interior Secretary Sally Jewell's second visit to the land; the Joint Legacy of Park District and NPS event with unveiling of the newly restored Depression-era topographical map that helped launch EBRPD; the 50th anniversary of Lake Chabot Regional Park; the 75th Anniversary of the opening of the Brazilian Room; and the 25th anniversary of the Oakland Hills Firestorm.



## MORE THAN JUST A PRETTY PLACE: EBRPD is a Strong Economic Engine

Over the past 80 years, the Park District has become an essential and irreplaceable part of life in the East Bay. Children take the Iron Horse Trail to school, and adults to work. Visitors tour historic sites to learn about the history of the land and peoples. Every year, the District hires and trains 400 youth and the parklands

remove carbon dioxide from the air, equivalent to the emissions of 60,000 vehicles. In 2016, a comprehensive study by prominent Oakland economists, Economic & Planning Systems, established that the District provides a range of benefits totaling about \$500 million annually in the following areas:

ecosystem services, recreation, property values, and public health. In fact, every \$1 spent by the District yields a return of \$4. Clearly, the District is a major driver of the economic vitality in the East Bay and a strong contributor to the quality of life, environment and community infrastructure.

## Connecting with Our Communities

Unique programs and outreach opportunities help us engage with the East Bay's growing multicultural communities. Our team of naturalists, recreation leaders and community outreach staff are always developing inviting opportunities to engage with new and returning park users. Here's a snapshot of just a few:

- Through Healthcare Providers...EBRPD partnered with UCSF Benioff Children's Hospital Oakland on a health impact study of chronically ill children receiving nature intervention through Park Prescriptions. Results included measured reduction of stress and general improvement of mental health factors when children participate in nature.
- Through Volunteers...more than 150,000 hours of service by 21,166 volunteers provided much needed assistance, shoreline clean up, tree plantings, trail maintenance and other valuable projects last year. Included were eight Eagle Scout projects.
- Through Classrooms...almost 60,000 youngsters visited our environmental education programs through our ten visitor centers. When kids can't come to us, we go to them via our mobile visitor center and mobile fish exhibit which served 10,000 children.
- Through Recreation and Aquatics...close to 17,000 kids and families enjoyed swim lessons, camps, boating, biking, fishing and day camp experiences taught by our recreation and aquatic staff. We hosted 13,106 campsite reservations.

- Through Public Safety...Park District police and fire serviced 8,300 calls and responded to 6,300 incidents in our Regional Parks. Park police actively patrol all 65 parks by vehicle, mounted patrols, bicycles and motorcycle and by helicopter to ensure the public's safety while visiting. Our volunteer trail safety patrol of more than 200 men and women trek the park trails daily on foot, on bicycle, on horseback and with their dogs as an additional safety protection.



## Parks = Jobs

With 65 parks in Alameda and Contra Costa counties, EBRPD is a great provider of over 1,000 full-time and part-time jobs throughout the communities we serve. In addition, we are committed to engaging with youth today to teach them the skills needed to become our employees of tomorrow. Last year, EBRPD hired 402 young people for seasonal positions in our parks, administrative offices and police department.

## Park District Leadership – Passing the Baton

Two longstanding, highly respected civic leaders retired from the East Bay Regional Park District Board of Directors in 2016. Proudly representing Alameda, Oakland, San Leandro and Lamorinda, John Sutter and Doug Siden served the Park District for a combined 44 years before passing the baton to their elected successors: Dionisio "Dee" Rosario, retired longtime Redwood Regional Park Supervisor (Ward 2) and Ellen Corbett, former State Senator,

Assemblywoman and Mayor of San Leandro (Ward 4). Park Board newcomer Colin Coffey, an attorney from Hercules, was appointed to the Park District Board for Ward 7 replacing Diane Burgis who resigned her seat due to her election to the Contra Costa County Board of Supervisors. Other members of the Board are Whitney Dotson (Ward 1), Beverly Lane (Ward 6), Dennis Waespi (Ward 3), and Ayn Wieskamp (Ward 5).

The Park District Board mourned the loss of Ted Radke, the longest tenured Board member with 34 years of service. Having retired just two years ago, Ted passed away in September. To honor both Ted and his wife Kathy's lifetime legacy to park and open space advocacy and shoreline access, the Board of Directors renamed Martinez Regional Shoreline as Ted and Kathy Radke Martinez Regional Shoreline.



## Board of Directors

L – R: Whitney Dotson, Ward 1  
Ayn Wieskamp, Ward 5  
Beverly Lane, President, Ward 6  
Robert E. Doyle, General Manager  
Dennis Waespi, Ward 3  
Dee Rosario, Ward 2  
Ellen Corbett, Ward 4  
Colin Coffey, Ward 7

## 2016 Park Acreage: Adding 1,040 acres for total of 120,931

Thanks to our funding partners like East Contra Costa County Habitat Conservancy, the Park District received grants and matching funds for 67% of acquisition costs, representing \$7.5 million of \$11.3 million in purchase price. Notable acquisitions include:

- 20 acres to protect marsh restoration at Point Pinole
- 26 acres to extend wetland restoration at Hayward Shoreline
- 50 acres to extend Black Diamond Mines Regional Preserve
- 76 acres at Deer Valley Regional Park
- 200 acres at Vasco Hills Regional Preserve
- 646 acres at Delta Access Regional Recreation Area

We also increased future public access to regional trails by an easement exchange to complete the Calaveras Ridge Trail segment from Olympic Boulevard to Rohrer Drive. We obtained shoreline access through new agreements with Union Pacific Railroad, and we acquired an easement from Golden Gate Fields to close a significant gap in the SF Bay Trail.



Briones Regional Park, Martinez